

8 | 7 | 6 | 5 | 4 | 3 | 2 | 1

**LYNX: MALE 50 PIN 'D'**

**CONN A**

- SERVO RELAY N/O 15 ← BLACK
- GND 1 ← BLACK
- C.V. GND SENSE 2 ←
- STOP 3 ←
- PLAY 37 ←
- LIFTER DEFEAT 6 ←
- CTRL COM 23 ←
- FAST FWD 7 ←
- REWIND 24 ←
- RECORD TALLY 8 ←
- TACH 42 ←
- CAPSTAN CTRL FREQ 4 ←
- DIRECTION 26 ←
- RECORD 40 ←
- SERVO RELAY COM 14 ←
- REHEARSE 12 ←
- NC ←
- PLAY TALLY 25 ←
- NC ←

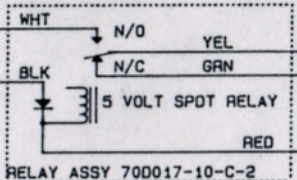
**TEN PAIR CABLE COLORS**

- BLACK (BRN)
- BROWN (BLK)
- BLACK (RED)
- RED (BLK)
- BLACK (ORG)
- ORANGE (BLK)
- BLACK (YEL)
- YELLOW (BLK)
- BLACK (GRN)
- GREEN (BLK)
- BLACK (BLU)
- BLUE (BLK)
- BLACK (WHT)
- WHITE (BLK)
- RED (GRN)
- GREEN (RED)
- RED (BLU)
- BLU (RED)

**AMPEX: MALE 26 PIN BURNDY**

**CONN B ("ACCESSORY")**

- BLACK → Y COMM
- NC → NC
- R STOP
- P PLAY
- V LIFT DEFEAT
- S F FWD
- T REW
- NC → NC
- AA → TACH OUT
- Z DIRECTION
- U RECORD
- NC → NC
- NC → NC
- DD → PLAY INDICATOR
- NC → NC



**AMPEX: MALE 8 PIN JONES**  
**CONN C ("VARIABLE SPEED")**

**TWO PAIR CABLE COLORS**

- WHT (RED) → 2 REF IN
- BLK (WHT) → 1 REF OUT
- RED (WHT) → 5 +15V

**TEN CONDUCTOR CABLE COLORS**

- GND 34 ← BLACK
- SPARE INPUT 9 ← BROWN
- 41 ← RED
- NC ← ORANGE
- REMOTE LOCK LIGHT 10 ← YELLOW
- SPARE OUTPUT 27 ← GREEN
- 11 ← BLUE
- MUTE RELAY N/C 47 ← VIOLET
- MUTE RELAY COM 48 ← GREY
- MUTE RELAY N/O 46 ← WHITE

UNCONNECTED 9" PIGTAIL FOR CUSTOMER CONNECTION

REV	DESCRIPTION
.00A	ADDED REHEARSE PIN, CHANGED DWG# FROM MM1200.001 TO 30-0008.001
11-1-88 AG	
2	CHANGED DWG# FROM 30-0008.00A TO 700017-20-8-1
12/20/89 MC	ADDED WIRE COLORS TO RELAY ASSY AMPEX WAS TASCAM ADDED CONN C SIGNAL NAMES ADDED PLAY TALLY ADDED UNUSED PAIRS

UNUSED PAIRS

TEN PAIR CABLE  
WHT (RED) AND RED (WHT)  
TWO PAIR CABLE  
WHT (BLK)

(C) 1989 TIMELINE, INC. 270 Lafayette St. New York, N.Y. 10012		APP'D <i>W</i>
SCHEMATIC CABLE ASSEMBLY AMPEX MM1200		CHK'D
CONFIDENTIAL	DATE	12/20/89
DWG 700017-20	REV C	PAGE 1
	SIZE B	

8 | 7 | 6 | 5 | 4 | 3 | 2 | 1