

**pete cornish
musical
accessories**

**unit 306,
164/180 union street,
london, SE1 OLH.
tel: 01 928 2670.**

OUT OF POCKET PRODUCTIONS.

GUITAR/EFFECTS ROUTING SYSTEM UNIT #1

S/No:231 FEBRUARY 1992.

UNIT #1

OPPSS

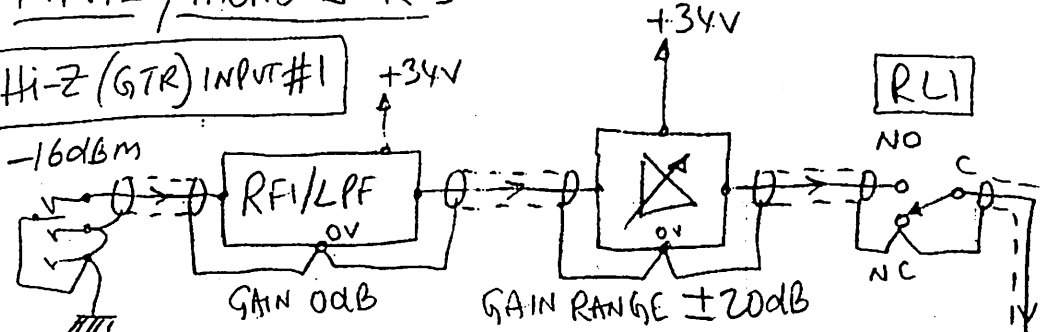
17/1/92

S/N 231

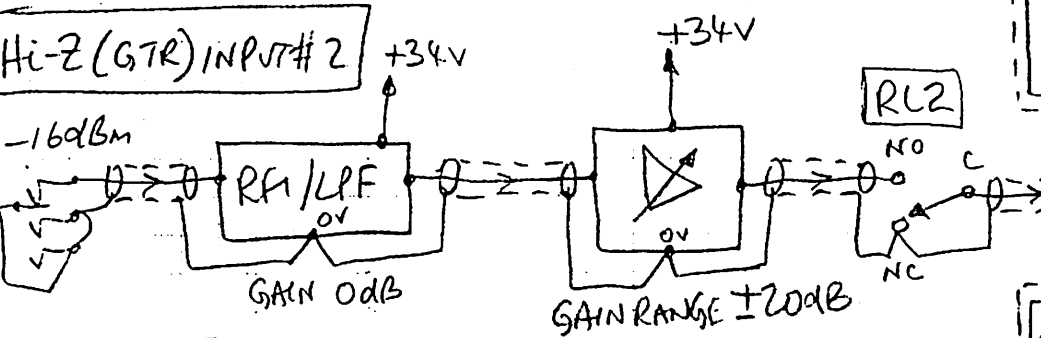
INPUTS / MONO S-R'S

(1)

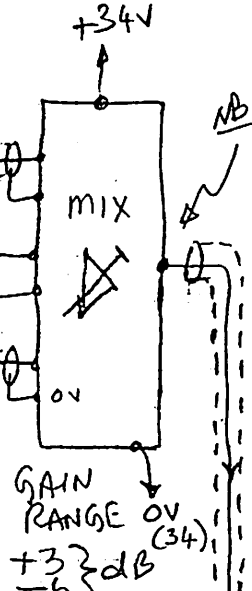
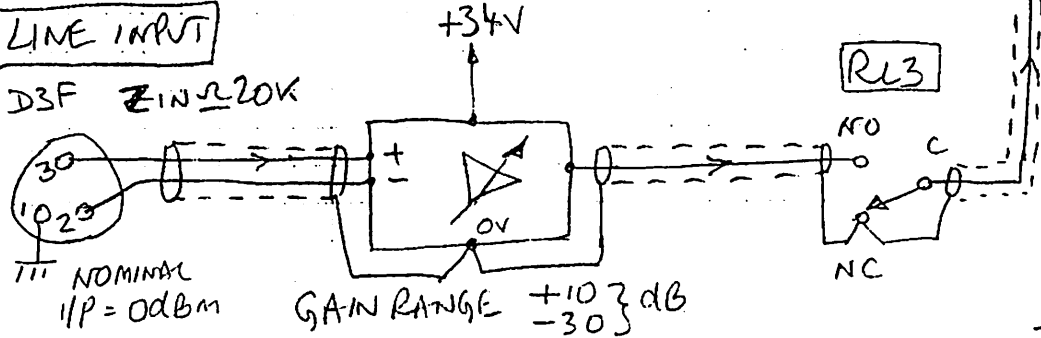
Hi-Z (GTR) INPUT #1



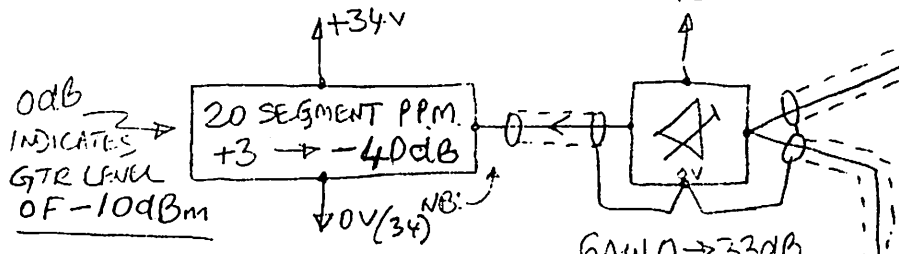
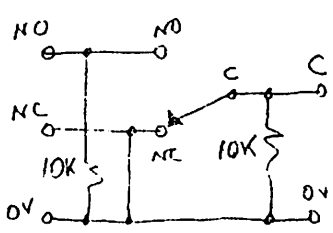
Hi-Z (GTR) INPUT #2



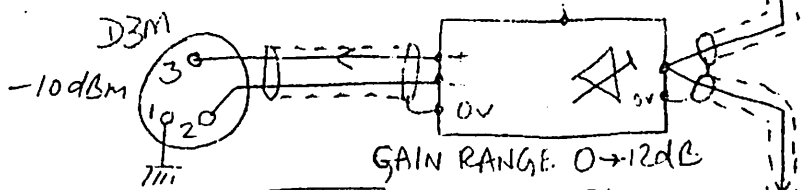
LINE INPUT



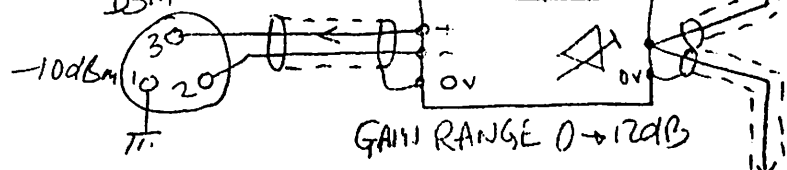
RL 1-3 :-




CLEAN GTR O/P #1




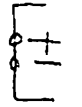
CLEAN GTR O/P #2



PRE-AMPS ETC:-

 FRONT PANEL CONTROL OF GAIN RANGE

 PRESET GAIN RANGE ON PCB.

 INDICATES BALANCED INPUT OR OUTPUT

NB: PIN 3 HOT THROUGHOUT TO P2

MULTICORE

TO S-R
REMOTE UNIT

SEND #1

RETURN #1

GAIN RANGE ± 10 dB

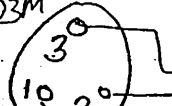
GAIN RANGE ± 10 dB

RL4

S-R#1

OV(34)

D3M



SEND #2

GAIN RANGE $+30$ } dB
 -10 }

RL5

S-R#2

OV(34)

D3F



RETURN #2

GAIN RANGE $+10$ } dB
 -30 }

REMOTE PEDAL
SEND/RETURN UNIT:
SEE P-6

SEND #3

RETURN #3

GAIN RANGE ± 10 dB

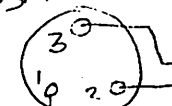
GAIN RANGE ± 10 dB

RL6

S-R#3

OV(34)

D3M



SEND #4

GAIN RANGE $+30$ } dB
 -10 }

RL7

S-R#4

OV(34)

D3F



RETURN #4

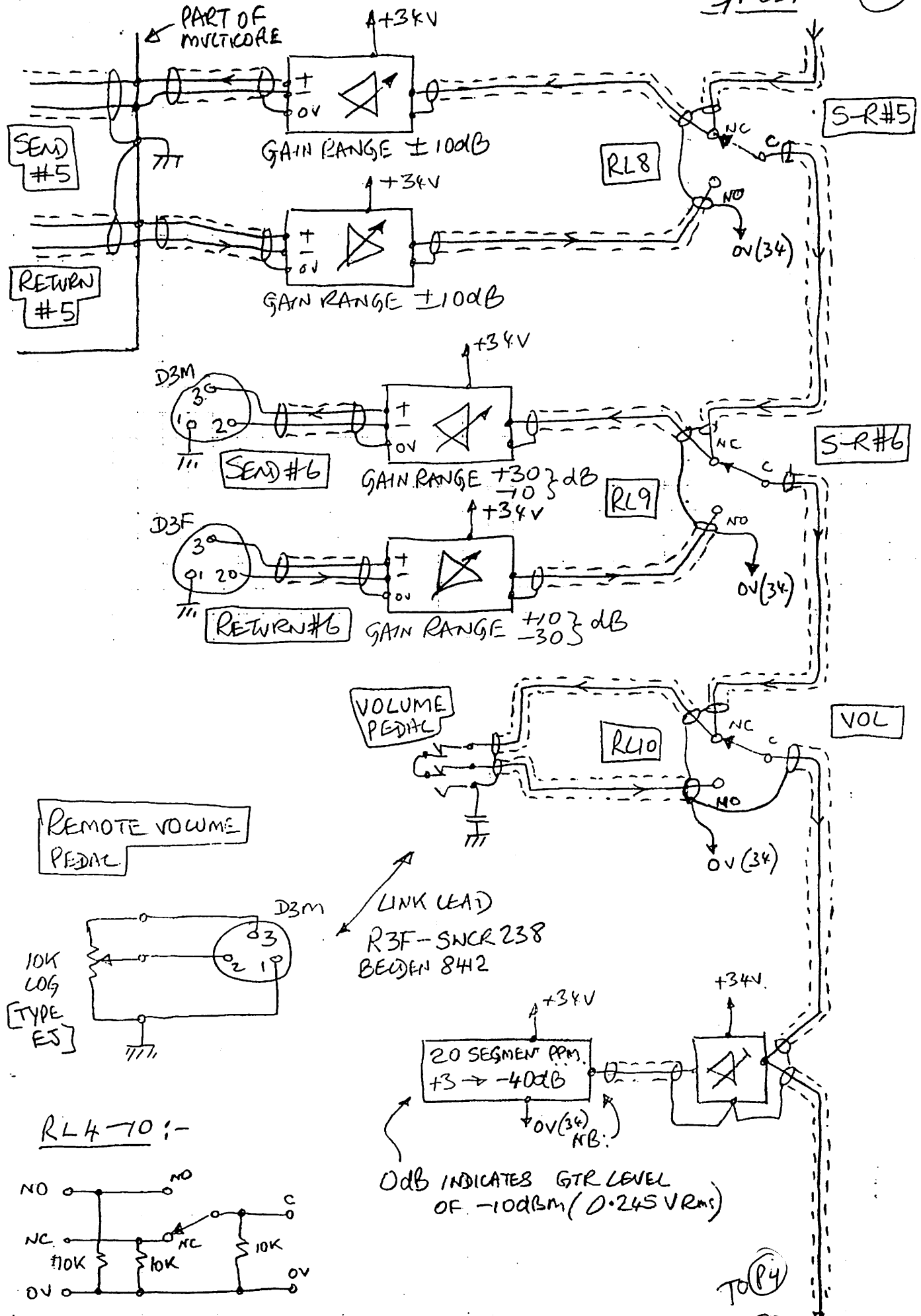
GAIN RANGE $+10$ } dB
 -30 }

TO(P3)

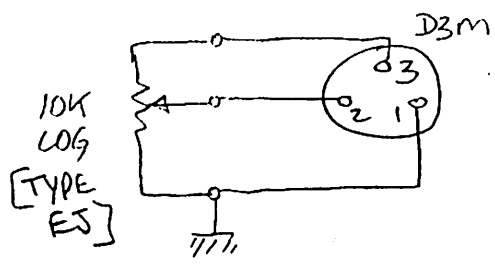
UNIT #1

00PPS

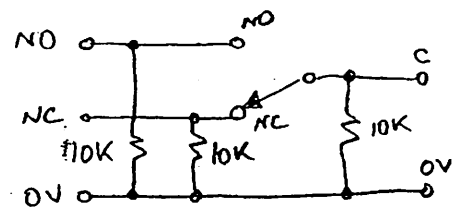
17/1/92
S/N 231 (3)



REMOTE VOLUME PEDAL

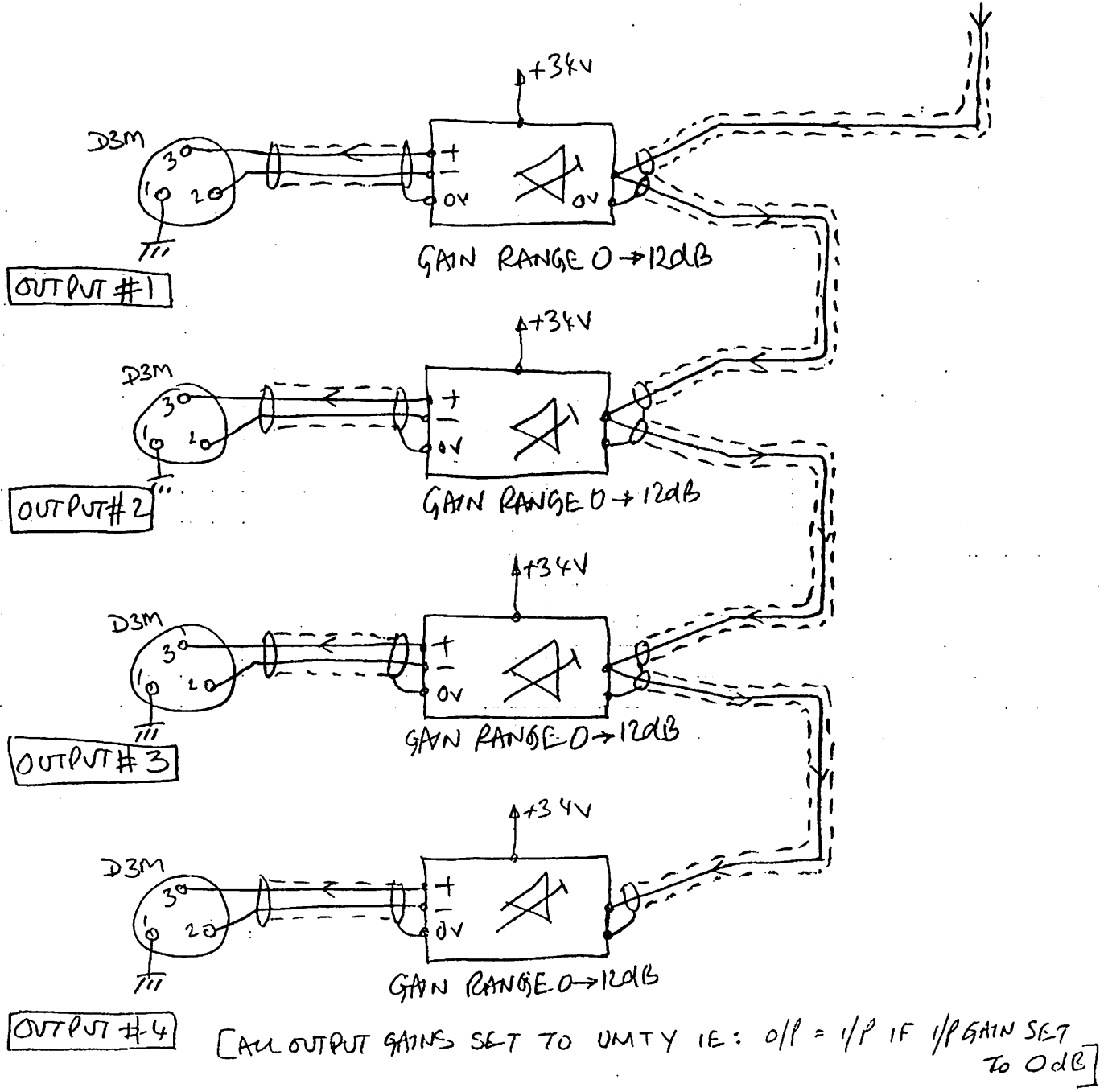


RL4-10 :-

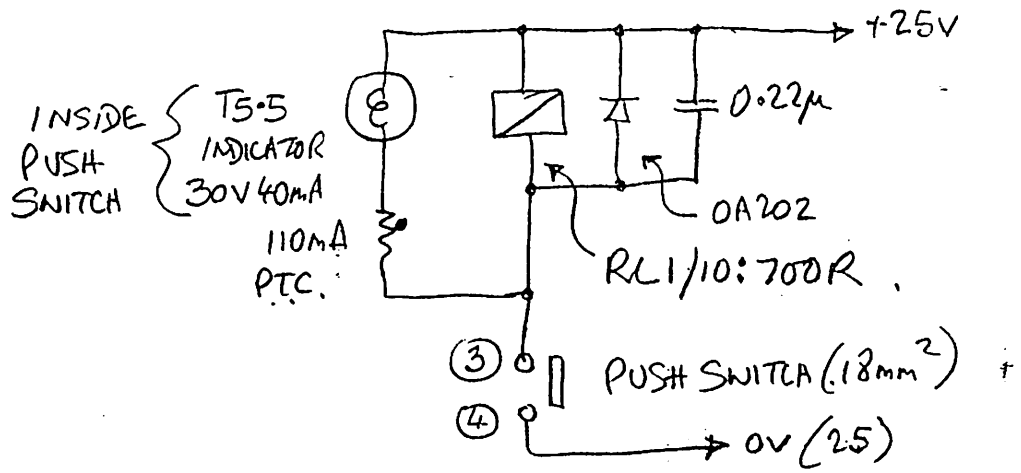


0dB INDICATES GTR LEVEL OF -10dBm (0.245 VRMS)

TO P4



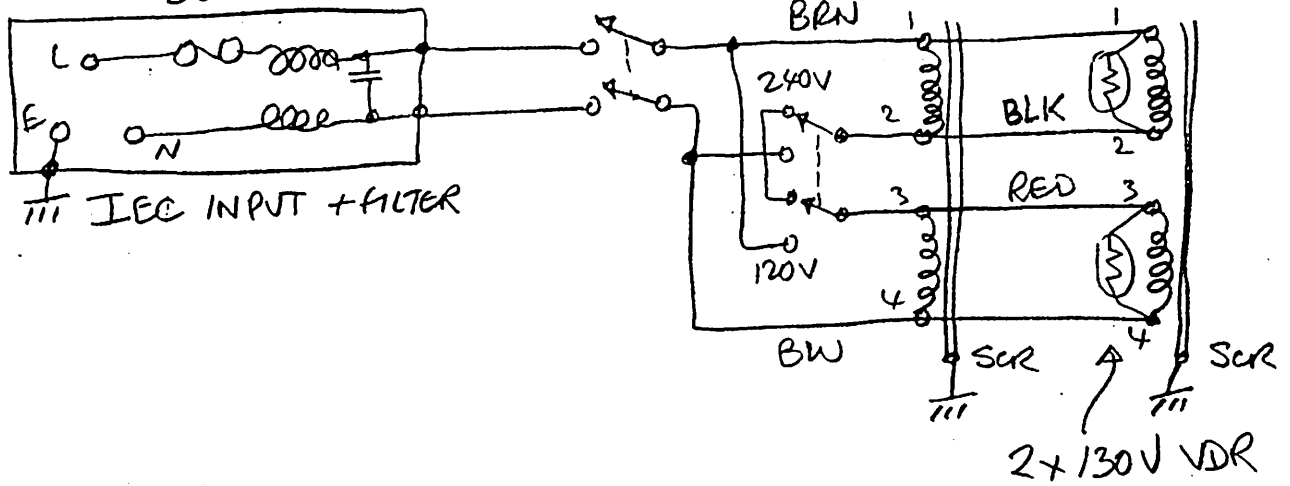
NOTES: ALL RELAYS CONTROLS WIRED THUS:



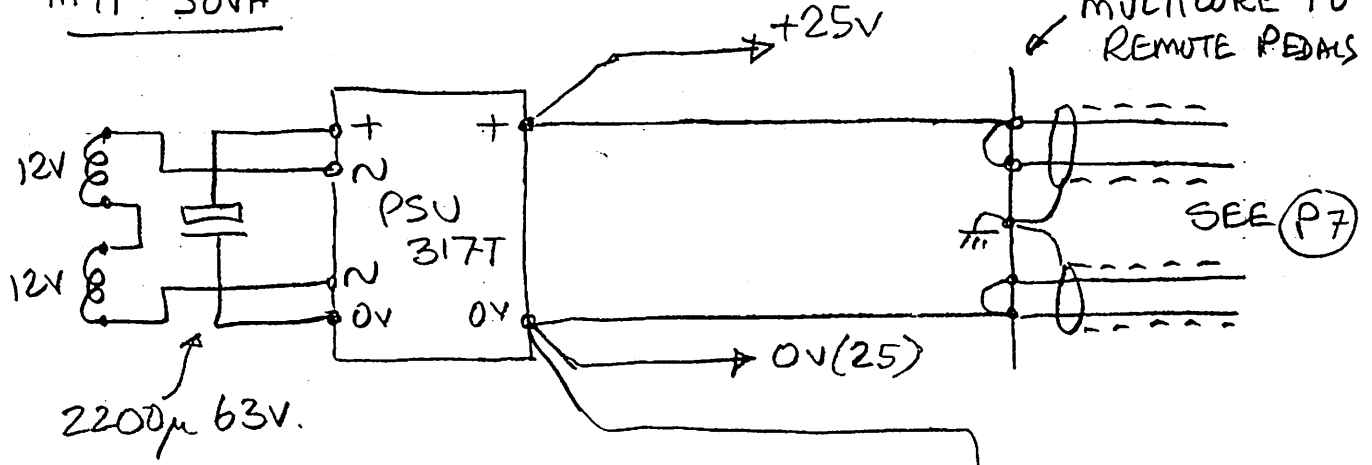
POWER SUPPLIES

500mA

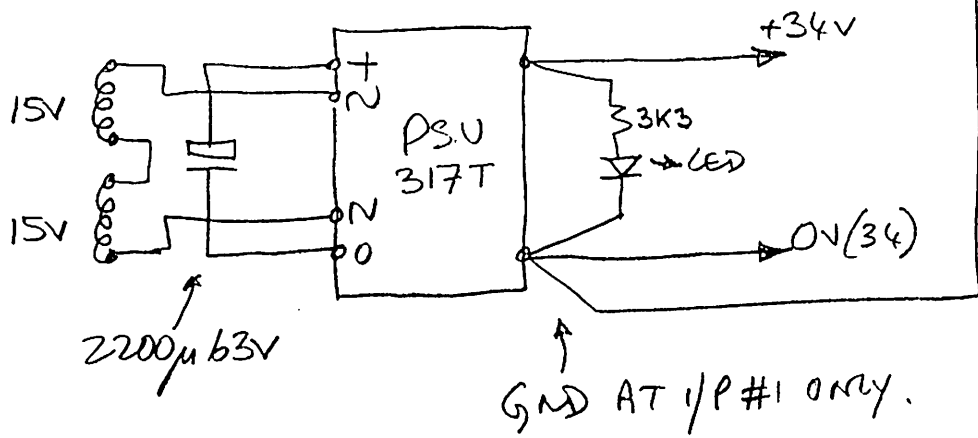
POWER ON



MT1 - 500mA



MT2 - 200mA



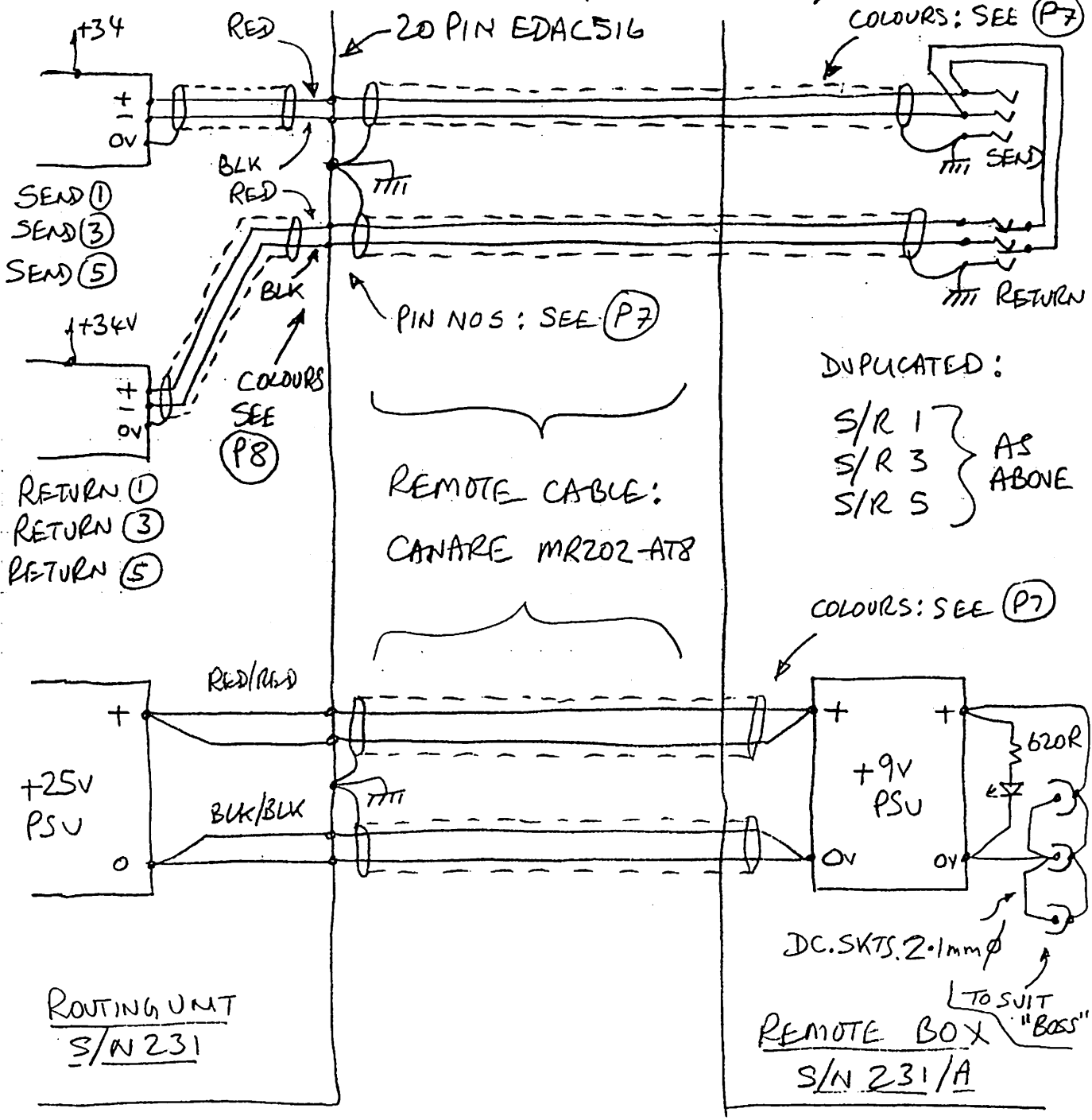
UNIT #1

00PPS

17/1/92
S/N 231

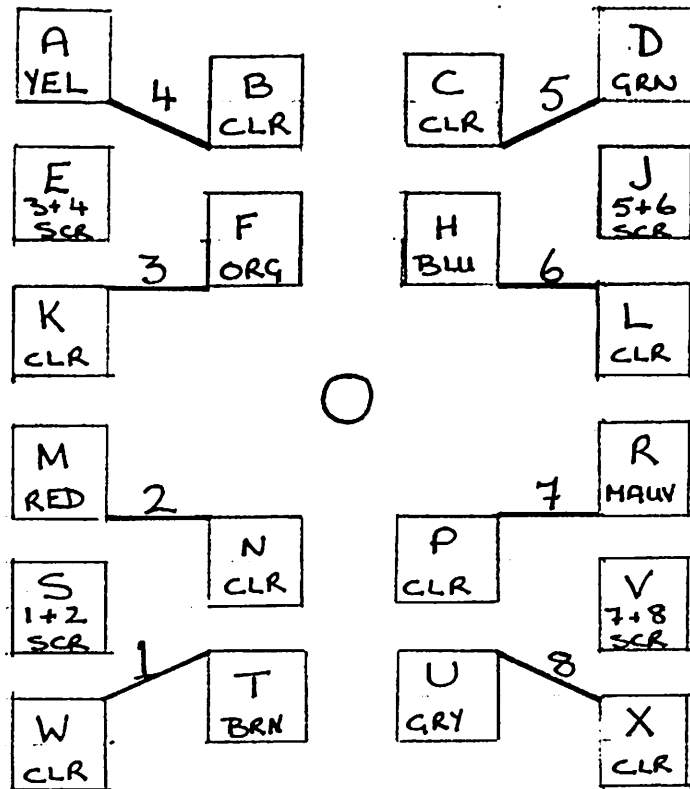
6

MULTICORE TO REMOTE S-R UNIT (SEE P(2)+(3))



FAT PIN

20 WAY EDAC



THIN PIN

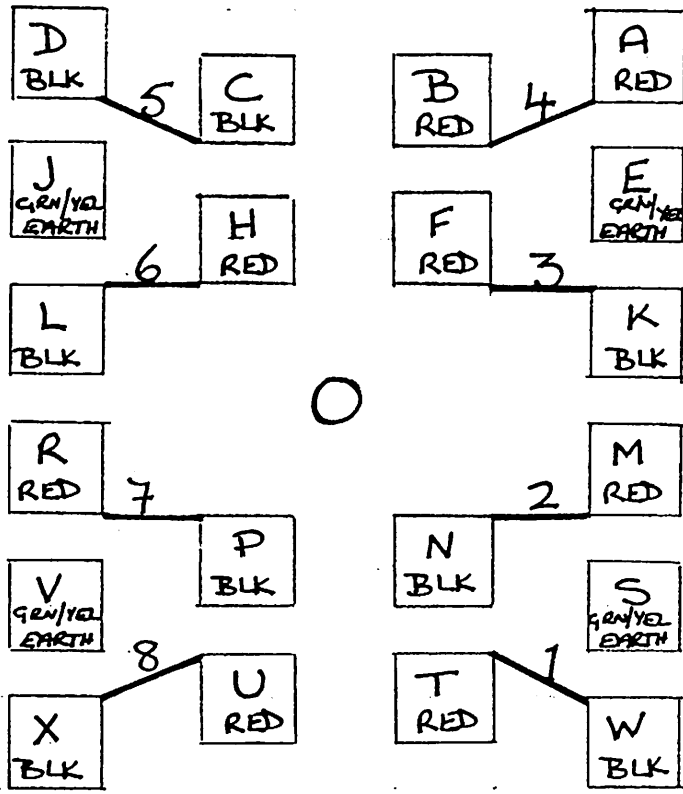
CABLE:- CANARE MR202 - AT8

PAIR NO:	COLOUR + PIN	USED FOR
1	BRN T	SEND 1
	CLR W	
2	RED M	SEND 3
	CLR N	
3	ORG F	SEND 5
	CLR K	
4	YEL A	+ 27V
	CLR B	
5	GRN D	OV (27)
	CLR C	
6	BLU H	RET 5
	CLR L	
7	MAUV R	RET 3
	CLR P	
8	GRY U	RET 1
	CLR X	

⚡ FAT PIN

20 WAY EDAC SOCKET

18



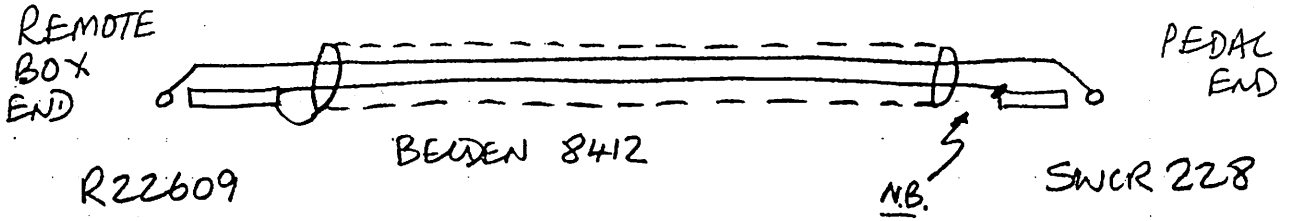
⚡ THIN PIN

PAIR NO.:	COLOUR + PIN	USED FOR
1	RED T	SEND 1
	BLK W	
2	RED M	SEND 3
	BLK N	
3	RED F	SEND 5
	BLK K	
4	RED A	+ 27V
	RED B	
5	BLK D	OV (27)
	BLK C	
6	RED H	RET 5
	BLK L	
7	RED R	RET 3
	BLK P	
8	RED U	RET 1
	BLK X	

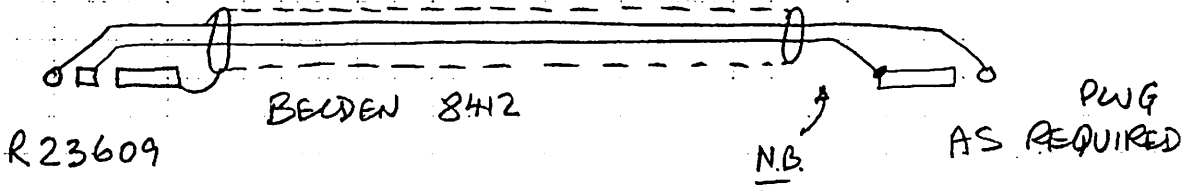
SEND / RETURN AND OUTPUT LEADS

(9)

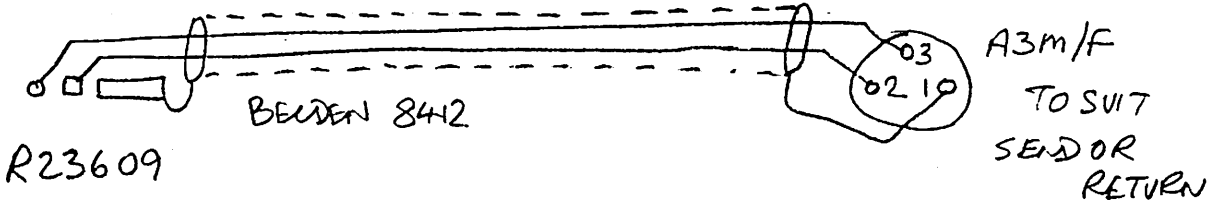
A) S/R ①, ③, ⑤ USED WITH "BOSS" OR SIMILAR PEDALS :-



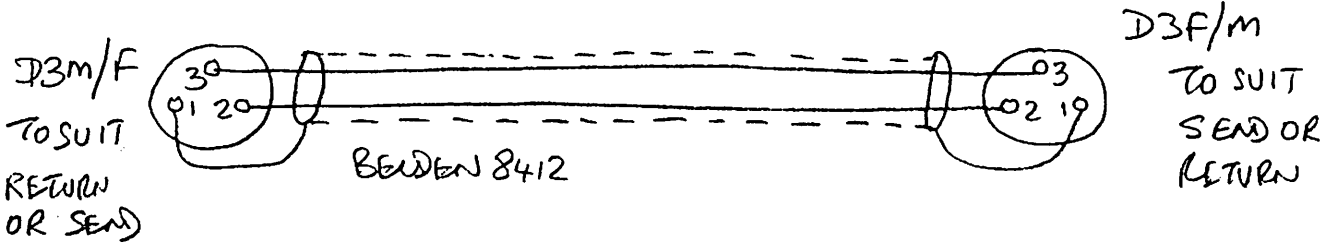
B) S/R ①, ③, ⑤ USED WITH MAINS POWERED / RACK TYPE EFFECTS ALSO SEND TO DRIVE GUITAR AMP / TUNER ETC. (JACK IN/OUT)



C) S/R ①, ③, ⑤ USED WITH RACK EFFECTS VIA TIE-LINES:



D) S/R ②, ④, ⑥ USED WITH RACK EFFECTS VIA TIE-LINES:



E) S/R ②, ④, ⑥ USED WITH "BOSS" OR SIMILAR PEDALS: ALSO OUTPUTS TO GUITAR AMPS ETC

