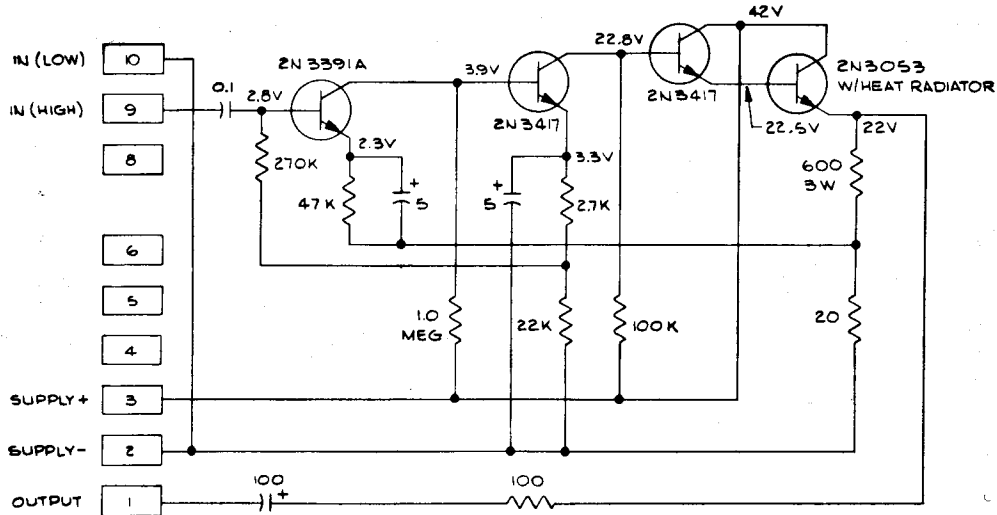


AM 4700 AMPLIFIER



THE AM4700 AMPLIFIER IS PRIMARILY INTENDED AS A "PROGRAM" AMPLIFIER.

- INPUT IMPEDANCE** Approximately 250,000 ohms. All data on this sheet were obtained with a source of 100,000 ohms.
- GAIN** Input of approximately 40 mv rms will cause output of plus four dbm into 600 ohm load.
- FREQ. RESPONSE** Uniform within 0.25 db over range 30 Hz to 15 kHz.
- OUTPUT Z** 600 ohms nominal. Actual dynamic output impedance is approximately 110 ohms.
- HARMONIC GENERATION, %** At plus eighteen dbm output into 600 ohms, total harmonic generation will be under 0.2 at 1000 Hz, and under 0.5 over the range 30 Hz to 15 kHz.
- NOISE** Noise generation is at least 60 db lower than an output level of plus four dbm.
- POWER REQUIREMENT** Demand from 42 v DC supply is approximately 40 milliamperes. Do not power from a supply that is over 50 v DC. Supply must contain less than 1.0 millivolt total noise.
- SIZE** Constructed on printed-wiring card whose overall dimensions are 2 1/4" wide x 2 1/2" long. "Long" dimension includes printed-on plug terminals. No part on the board extends over 1 1/8" from surface.
- MOUNTING** To be mounted in TRY4000. When seated in tray, maximum overall dimensions are: From flat side of tray to top of tallest part on AM4700, 1 1/2". Flat mounting area (length includes solder lugs on tray connector), 2 7/8" long x 2.450" wide.
- When the TRY4000 (containing AM4700 Amplifier) is mounted to panel by means of the BKT4000 Bracket and a gain control (not supplied), minimum mounting centers are 1 5/8".

* * * * *

Because of a policy of inaugurating changes in solid-state equipment at irregular intervals in order to maintain "state of the art" performance, Langevin reserves the right to modify design of this product without notification.