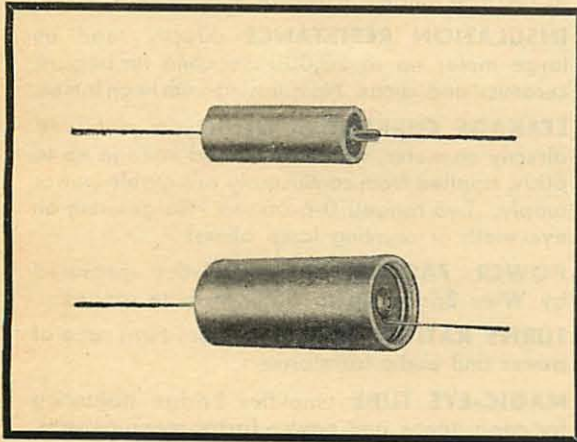




"JETS" ELECTROLYTIC TUBULARS



" JETS "

Tobe "Jets" are tubular electrolytic capacitors hermetically sealed into aluminum containers with plastic sleeves.

They are constructed with utmost compactness and are self-supported by means of rigged finned leads. The larger sizes may be further supported by a metal strap furnished on order.

NEGATIVE TERMINAL IS GROUNDED TO CAN.

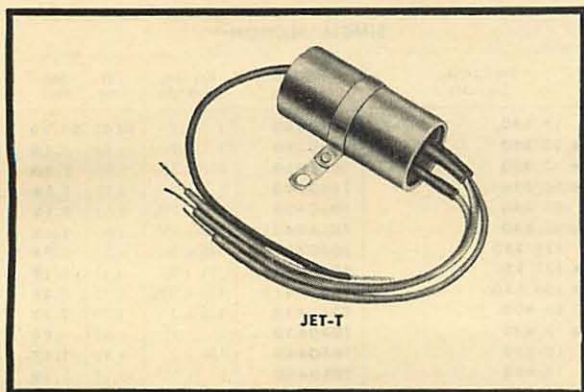
TEMPERATURE RANGE: to +85°C; except
500 VDC +65°C

JET	Cat. No.	Cap. Mfd.	Can Size—Inches Diam. x Length	List Price	Net Price
3 W.V.D.C.					
JET 25-3	25		3/8 x 1 1/16	\$.85	\$.51
JET 50-3	50		3/8 x 1 1/16	.95	.57
6 W.V.D.C.					
JET 5-6	5		3/8 x 1 1/16	.80	.48
JET 25-6	25		3/8 x 1 1/16	.85	.51
JET 50-6	50		3/8 x 1 1/16	.95	.57
JET 100-6	100		1/2 x 1 1/16	1.20	.72
JET 250-6	250		1/2 x 1 1/16	1.35	.81
JET 500-6	500		3/4 x 1 11/16	1.55	.93
JET 1000-6	1000		7/8 x 2	1.90	1.14
JET 2000-6	2000		1 x 2 1/2	2.30	1.38
15 W.V.D.C.					
JET 100-15	100		1/2 x 1 1/16	1.25	.75
JET 2501	250		3/4 x 1 11/16	1.55	.93
JET 5001	500		7/8 x 2	1.75	1.05
JET 10001	1000		1 x 2	2.30	1.38
JET 20001	2000		1 x 3	3.20	1.92
25 W.V.D.C.					
JET 10-25	10		3/8 x 1 1/16	1.00	.60
JET 20-25	20		3/8 x 1 1/16	1.00	.60
JET 25-25	25		3/8 x 1 1/16	1.00	.60
JET 50-25	50		1/2 x 1 1/16	1.10	.66
JET 100-25	100		1/2 x 1 1/16	1.35	.81
JET 2502	250		3/8 x 1 11/16	1.70	1.02
JET 5002	500		1 x 2	2.30	1.38
50 W.V.D.C.					
JET 1-50	1		3/8 x 1 1/16	.90	.54
JET 2-50	2		3/8 x 1 1/16	.90	.54
JET 4-50	4		3/8 x 1 1/16	1.00	.60
JET 5-50	5		3/8 x 1 1/16	1.00	.60
JET 10-50	10		3/8 x 1 1/16	1.00	.60
JET 25-50	25		1/2 x 1 1/16	1.05	.63
JET 1005	100		3/4 x 2	1.40	.84
JET 1505	150		3/4 x 2	1.55	.93
JET 2505	250		7/8 x 2	1.75	1.05
JET 5005	500		1 x 3	2.40	1.44

JET	Cat. No.	Cap. Mfd.	Can Size—Inches Diam. x Length	List Price	Net Price
90 W.V.D.C.					
JET 10-90	10		1/2 x 1 1/16	\$1.10	\$.66
JET 16-90	16		1/2 x 1 1/16	1.10	.66
150 W.V.D.C.					
JET 4-150	4		3/8 x 1 1/16	1.00	.60
JET 8-150	8		1/2 x 1 1/16	1.05	.63
JET 10-150	10		1/2 x 1 1/16	1.05	.63
JET 12-150	12		1/2 x 1 1/16	1.10	.66
JET 16-150	16		1/2 x 1 1/16	1.15	.69
JET 20-150	20		1/2 x 1 1/16	1.20	.72
JET 2515	25		3/4 x 1 1/16	1.25	.75
JET 3015	30		3/4 x 1 1/16	1.30	.78
JET 4015	40		3/4 x 1 11/16	1.35	.81
JET 5015	50		7/8 x 1 11/16	1.40	.84
JET 6015	60		7/8 x 2	1.50	.90
JET 8015	80		7/8 x 2	1.60	.96
JET 10015	100		1 x 2 1/2	1.75	1.05
JET 15015	150		1 x 3	1.90	1.14
JET 20015	200		1 x 3	2.20	1.32
JET 30015	300		1 x 4 1/16	2.55	1.53
250 W.V.D.C.					
JET 4-250	4		1/2 x 1 1/16	1.00	.60
JET 8-250	8		1/2 x 1 1/16	1.15	.69
JET 12-250	12		1/2 x 1 1/16	1.25	.75
JET 1625	16		3/4 x 1 11/16	1.30	.78
JET 2025	20		3/4 x 1 11/16	1.35	.81
JET 3025	30		3/4 x 1 11/16	1.45	.87
JET 4025	40		7/8 x 2	1.55	.93
JET 5025	50		1 x 2	1.70	1.02
JET 6025	60		1 x 2 1/2	1.80	1.08
350 W.V.D.C.					
JET 435	4		3/8 x 1 1/16	1.05	.63
JET 835	8		3/8 x 1 11/16	1.20	.72
JET 1235	12		3/4 x 1 11/16	1.30	.78
JET 1635	16		3/4 x 1 11/16	1.40	.84
JET 2035	20		3/4 x 1 11/16	1.45	.87
JET 3035	30		1 x 2	1.65	.99
JET 4035	40		1 x 2 1/2	1.75	1.05
JET 5035	50		1 x 2 1/2	1.85	1.11
JET 6035	60		1 x 2 1/2	1.95	1.17
JET 8035	80		1 x 3 1/16	2.10	1.26
JET 10035	100		1 x 4 1/16	2.30	1.38
450 W.V.D.C.					
JET 145	1		3/8 x 1 1/16	1.10	.66
JET 245	2		3/8 x 1 1/16	1.10	.66
JET 445	4		3/8 x 1 1/16	1.15	.69
JET 845	8		3/4 x 1 1/16	1.25	.75
JET 1045	10		3/4 x 1 11/16	1.30	.78
JET 1245	12		3/4 x 1 11/16	1.35	.81
JET 1645	16		7/8 x 2	1.40	.84
JET 2045	20		7/8 x 2	1.55	.93
JET 3045	30		1 x 2 1/2	1.70	1.02
JET 4045	40		1 x 2 1/2	1.80	1.08
JET 6045	60		1 x 3 1/16	2.35	1.41
JET 8045	80		1 x 4 1/16	2.80	1.68
JET 10045	100		1 x 4 1/16	3.20	1.92
500 W.V.D.C.					
JET 450	4		3/8 x 1 11/16	1.20	.72
JET 850	8		3/4 x 1 11/16	1.30	.78
JET 1250	12		3/8 x 2	1.40	.84
JET 1650	16		1 x 2	1.50	.90
JET 2050	20		1 x 2	1.60	.96
JET 3050	30		1 x 2 1/2	1.75	1.05
JET-H					
JET-H	Cat. No.	Cap. Mfd.	OVERALL Size—Inches Diam. x Length	List Price	Net Price
600 W.V.D.C.					
JET-H 604	4		1 1/16 x 2 7/16	\$1.95	\$1.17
JET-H 608	8		1 1/16 x 3 3/16	2.10	1.26
JET-H 610	10		1 1/16 x 3 3/16	2.20	1.32
JET-H 612	12		1 1/16 x 3 3/16	2.40	1.44
JET-H 616	16		1 1/16 x 3 3/16	2.55	1.53
JET-H 620	20		1 1/16 x 3 11/16	2.70	1.62
700 W.V.D.C.					
JET-H 708	8		1 1/16 x 3 3/16	2.20	1.32
JET-H 710	10		1 1/16 x 3 3/16	2.35	1.41
JET-H 712	12		1 1/16 x 3 11/16	2.45	1.47
JET-H 716	16		1 1/16 x 4 3/16	2.65	1.59



MULTI-SECTION TUBULAR ELECTROLYTICS



JET-T

A series of compact, tubular METAL-CASED, CARDBOARD SLEEVED electrolytics—specially sealed against heat and humidity.

Featuring—

- ◆ Direct-to-terminal internal lead construction reduces possibility of shorts. (Pure aluminum wires crimped securely together with outer leads within aluminum stud terminals.)
- ◆ New high-insulation vinylite covered leads—generous 7 inches long.
- ◆ Sections sealed in aluminum tube for protection against moisture getting in, or electrolyte drying out.
- ◆ Wax impregnated cardboard outer insulation sleeve.
- ◆ Rubber diaphragm-type vent insures ideal vent action under all conditions.
- ◆ IDEAL FOR OPERATION AT TEMPERATURES UP TO 85° C.

JET-D — Dual Common Negative

JET-D Cat. No.	Cap. Mfd.	D.C. W. Volts	Can† Size—Inches Dia. x Lgth.	List Price	Net Price
JET-D 2202	20-20	25	3/4 x 1 1/16	\$1.40	\$.84
JET-D 1115	10-10	50	3/4 x 1 1/16	1.40	.84
JET-D 2115	20-10	150	3/4 x 1 1/16	1.55	.93
JET-D 2215	20-20	150	3/4 x 1 1/16	1.65	.99
JET-D 3215	30-20	150	3/4 x 1 1/16	1.70	1.02
JET-D 3315	30-30	150	3/4 x 1 1/16	1.80	1.08
JET-D 4215	40-20	150	3/4 x 1 1/16	1.75	1.05
JET-D 4315	40-30	150	3/4 x 2	1.80	1.08
JET-D 4415	40-40	150	3/4 x 2	1.85	1.11
JET-D 5315	50-30	150	3/4 x 2	1.95	1.17
JET-D 5515	50-50	150	1 x 2	2.10	1.26
JET-D 8415	80-40	150	1 x 2 1/2	2.25	1.35
JET-D 8515	80-50	150	1 x 2 1/2	2.30	1.38
*JET-D 0183.7	100-50	150	1 x 3	3.00	1.80
*JET-D 101015	100-100	150	1 x 3	3.20	1.92
*JET-D 0196	200-5	200	1 x 4 1/16	3.50	2.10
JET-D 8D25	8-8	250	3/4 x 1 1/16	1.60	.96
JET-D 16825	16-8	250	3/4 x 2	1.70	1.02
JET-D 16D25	16-16	250	3/4 x 2	1.80	1.08
JET-D 2225	20-20	250	1 x 1 1/16	1.85	1.11
JET-D 3325	30-30	250	1 x 2 1/16	2.25	1.35
*JET-D 7V225	75-20	250	1 x 3	2.60	1.56
*JET-D 0242	80-10	250	1 x 3	2.55	1.53
*JET-D 0246	120-80	250	1 1/2 x 3 1/16	4.00	2.40
*JET-D 0286	150-100	300	1 3/4 x 4 1/16	5.25	3.15
*JET-D 0334	140-5	350	1 1/2 x 4 1/16	4.15	2.49
JET-D 8D45	8-8	450	3/4 x 1 1/16	1.70	1.02
JET-D 16845	16-8	450	1 x 2 1/2	2.00	1.20
JET-D 16D45	16-16	450	1 x 2 1/2	2.25	1.35
*JET-D 2245	20-20	450	1 x 3	2.50	1.50
*JET-D 3345	30-30	450	1 1/2 x 3 1/16	3.00	1.80
*JET-D 4445	40-40	450	1 x 4 1/16	3.40	2.04
*JET-D 0376	60, 125	200, 50	1 x 3	3.25	1.95
JET-D 0646	20, 100	450, 25	1 x 2 1/2	2.20	1.32
*JET-D 0652	40, 50	450, 50	1 x 3 1/16	3.00	1.80
*JET-D 0722	80, 100	450, 50	1 1/2 x 3 1/16	3.75	2.25
*JET-D 0707	30, 50	450, 200	1 1/2 x 2 1/2	2.85	1.71

†For OVERALL size add 1/16" to Diam. and 3/16" to Length.
All above Packed—5 Units per Carton, except those marked (*) which are individual Carton Packed.

JET-T — Triple-Common Negative

JET-T Cat. No.	Cap. Mfd.	D.C. W. Volts	Can† Size—Inches Dia. x Lgth.	List Price	Net Price
JET-T 22215	20-20-20	150	3/4 x 1 1/16	\$2.20	\$1.32
JET-T 32V215	30-25-20	150	3/4 x 2	2.25	1.35
JET-T 33315	30-30-30	150	1 x 2	2.35	1.41
JET-T 42215	40-20-20	150	1 x 1 1/16	2.25	1.35
JET-T 43215	40-30-20	150	1 x 2	2.35	1.41
JET-T 44215	40-40-20	150	1 x 2	2.35	1.41
JET-T 44415	40-40-40	150	1 x 2 1/16	2.45	1.47
JET-T 53215	50-30-20	150	1 x 2	2.45	1.47
*JET-T 84215	80-40-20	150	1 x 3	2.75	1.65
*JET-T 0126.5	150-150-150	150	1 3/4 x 4 1/16	4.75	2.85
*JET-T 7V4125	75-40-10	250	1 1/4 x 3	3.45	2.07
*JET-T 0185	40-40-40	300	1 1/4 x 3	4.60	2.76
*JET-T 0196	120-40-10	300	1 3/4 x 3 1/16	4.85	2.91
*JET-T 0235	60-60-5	350	1 3/4 x 3 1/16	4.25	2.55
*JET-T 11145	10-10-10	450	1 x 2 1/2	2.45	1.47
*JET-T 16745	16-16-16	450	1 1/4 x 3	3.10	1.86
JET-T 4415X25	40-40, 250	150, 10	1 x 2 1/16	2.60	1.56
JET-T 5315X20	50-30, 200	150, 10	1 x 2 1/16	2.55	1.53
JET-T 5315C	50-30, 20	150, 25	1 x 1 1/16	2.35	1.41
JET-T 5515C	50-50, 20	150, 25	1 x 2 1/16	2.50	1.50
JET-T 8415C	80-40, 20	150, 25	1 x 2 1/2	2.65	1.59
JET-T 3215C10	30-20, 100	150, 25	1 x 2	2.35	1.41
JET-T 2215C	20-20, 20	150, 25	3/4 x 1 1/16	2.05	1.23
JET-T 3315C	30-30, 20	150, 25	3/4 x 2	2.20	1.32
JET-T 4215C	40-20, 20	150, 25	1 x 1 1/16	2.15	1.29
JET-T 4315C	40-30, 20	150, 25	1 x 1 1/16	2.20	1.32
JET-T 4415C	40-40, 20	150, 25	1 x 1 1/16	2.25	1.35
JET-T 5315C10	50-30, 100	150, 25	1 x 2 1/16	2.45	1.47
JET-T 5315C25	50-30, 250	150, 25	1 x 3	3.10	1.86
JET-T 8215C10	80-20, 100	150, 25	1 x 2 1/2	2.75	1.65
JET-T 2225C	20-20, 20	250, 25	1 x 2	2.25	1.35
JET-T 4225C	40-20, 20	250, 25	1 x 2 1/16	2.55	1.53
JET-T 4425C	40-40, 20	250, 25	1 x 2 1/16	2.90	1.74
*JET-T 0733	80-10, 100	300, 50	1 3/4 x 3 1/16	4.05	2.43
*JET-T 0878	140-5, 200	350, 200	1 1/2 x 4 1/16	6.70	4.02
*JET-T 2245C	20-20, 20	450, 25	1 x 3	2.90	1.74
*JET-T 1238	5, 80-40	450, 400	1 3/4 x 3 1/16	4.55	2.73
*JET-T 1411	30, 50, 100	450, 150, 25	1 1/4 x 3	3.70	2.22

JET-Q — Quadruple-Common Negative

JET-Q Cat. No.	Cap. Mfd.	D.C. W. Volts	Can† Size—Inches Dia. x Lgth.	List Price	Net Price
*JET-Q 111145	10-10-10-10	450	1 x 3	\$3.20	\$1.92
*JET-Q 222245	20-20-20-20	450	1 1/4 x 4 1/16	4.50	2.70
*JET-Q 0125	20-20-20-10	450	1 3/4 x 3 1/16	4.25	2.55
*JET-Q 0170.5	40-20-20-10	450	1 3/4 x 3 1/16	4.70	2.82
*JET-Q 0174	40-40-20-20	450	1 3/4 x 4 1/16	5.45	3.27
JET-Q 33215C	30-30-20, 20	150, 25	1 x 2	2.90	1.74
JET-Q 42215C	40-20-20, 20	150, 25	1 x 2	2.85	1.71
JET-Q 44215C	40-40-20, 20	150, 25	1 1/2 x 2 1/2	3.00	1.80
JET-Q 53215C	50-30-20, 20	150, 25	1 x 2 1/2	3.05	1.83
*JET-Q 55215C	50-50-20, 20	150, 25	1 x 3	3.45	2.07
*JET-Q 0789.4	140-5, 200-30	300, 150	1 1/2 x 4 1/16	5.15	3.09
*JET-Q 0385	120-40-40, 10	300, 250	1 3/4 x 3 1/16	6.20	3.72
*JET-Q 22243C	20-20-20, 20	450, 25	1 3/4 x 3 1/16	4.05	2.43
*JET-Q 0695.3	10, 20-20-10	450, 350	1 3/4 x 3	3.50	2.10
*JET-Q 0789.5	80-60, 40, 20	350, 300, 150	1 3/4 x 3 1/16	5.90	3.54
*JET-Q 0925	140, 5, 200-30	350, 300, 200	1 3/4 x 4 1/16	7.65	4.59
*JET-Q 0805	80-10, 40, 100	400, 300, 50	1 3/4 x 3 1/16	5.45	3.27
*JET-Q 0926.5	10, 80, 40-40	450, 300, 250	1 3/4 x 3 1/16	4.95	2.97
*JET-Q 0954	10, 80, 40, 100	450, 300, 250, 50	1 3/4 x 3 1/16	4.80	2.88
JET-Q 0954.5	20, 120, 40, 100	450, 300, 250, 50	1 3/4 x 4 1/16	6.15	3.69

TEJ — Dual SEPARATE Section

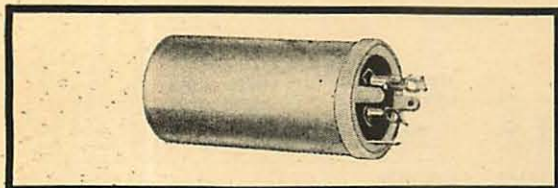
Type TEJ Capacitors are dual units in CARDBOARD TUBE containers with wax-filled ends. Capacities, voltages and polarity of the leads are clearly defined by color coding stamped on the tube casing.

TEMPERATURE RANGE: to +65° C.

TEJ Cat. No.	Cap. Mfd.	D.C. W. Volts	OVERALL Size—Inches Dia. x Lgth.	List Price	Net Price
*TEJ 221555	20-20	150	1 1/2 x 2 1/2	\$1.65	\$.99
*TEJ 331555	30-30	150	1 x 2 1/2	1.80	1.08
*TEJ 421555	40-20	150	1 x 2 1/2	1.75	1.05
*TEJ 441555	40-40	150	1 1/2 x 2 1/2	1.85	1.11
*TEJ 531555	50-30	150	1 1/2 x 2 1/2	1.95	1.17
*TEJ 551555	50-50	150	1 1/2 x 3 1/2	2.10	1.26
*TEJ 841555	80-40	150	1 1/2 x 3 1/2	2.25	1.35



TWIST-PRONG BASE ELECTROLYTICS



TOBE TD types are small round-can TWIST-PRONG electrolytic units. Each is furnished with a bakelite and a metal mounting washer.

TDX types are especially designed for SELENIUM RECTIFIER circuit applications. ONLY THIS TYPE SHOULD BE USED FOR THIS SERVICE.

TEMP. RANGE: to 475 V.D.C.W. +85°C.
over 475 V.D.C.W. +65°C.)

*** PREFERRED TYPE SINGLE SECTION**

Single Section Cap./Volts	Rotational Stock No.	Size—Ins. Dia. x Lgth.	List Price	Net Price
10 Ohms 30 CPS.	TDA0010	3/4 x 2	\$2.50	\$1.50
.5 Ohms 15,750 CPS.	TDA0020	1 x 2	2.75	1.65
1 Ohms 60 CPS.	TDA0030	1 1/2 x 3	3.50	2.10
* 2000/6	TDA0040	1 3/4 x 2	2.55	1.53
3000/10	TDA0050	1 3/4 x 2 1/2	3.65	2.19
* 225/15	TDA0053	3/4 x 2	1.75	1.03
* 1000/15	TDA0060	1 x 2 1/2	2.55	1.53
* 2000/15	TDA0070	1 3/4 x 2 1/2	3.45	2.07
* 3000/15	TDA0080	1 3/4 x 3	3.50	2.10
* 40/25	TDA0090	3/4 x 2	1.35	.81
100/25	TDA0100	3/4 x 2	2.00	1.20
500/25	TDA0110	1 x 2 1/2	3.20	1.92
* 500/25	TDA0120	1 x 2	2.55	1.53
* 1000/25	TDA0130	1 3/4 x 2	3.55	2.13
* 100/50	TDA0140	3/4 x 2	1.65	.99
* 150/50	TDA0150	1 x 2	1.80	1.08
* 500/50	TDA0160	1 3/4 x 2	2.65	1.59
* 1000/50	TDA0170	1 3/4 x 3 3/4	3.75	2.25
* 1500/50	TDA0174	1 3/4 x 4 1/4	3.85	2.31
* 30/150	TDA0180	3/4 x 2	1.55	.93
40/150	TDA0190	1 x 2	2.00	1.20
40/150	TDXA0191	3/4 x 2	2.00	1.20
* 50/150	TDA0200	1 x 2	1.65	.99
60/150	TDA0220	1 x 2	2.20	1.32
80/150	TDA0230	1 x 2	2.30	1.38
* 80/150	TDXA0231	1 x 2	1.85	1.11
100/150	TDA0240	1 x 2 1/2	2.50	1.50
* 100/150	TDXA0241	1 x 2 1/2	2.00	1.20
* 120/150	TDXA0248	1 x 2 1/2	2.05	1.23
* 120/150	TDA0250	1 3/4 x 2	2.05	1.23
150/150	TDA0260	1 x 3	2.70	1.62
* 150/150	TDXA0261	1 x 3	2.15	1.29
* 200/150	TDXA0262	1 3/4 x 2 1/2	2.45	1.47
* 200/150	TDXA0262.1	1 x 3 3/4	2.45	1.47
* 300/150	TDXA0263	1 3/4 x 3	2.80	1.68
80/200	TDXA0265	1 3/4 x 2	2.45	1.47
* 120/200	TDXA0265.3	1 3/4 x 2	2.80	1.68
150/200	TDXA0266	1 3/4 x 2 1/2	3.50	2.10
* 20/230	TDA0270	3/4 x 2	1.60	.96
30/250	TDA0280	1 x 2	2.15	1.29
40/250	TDA0290	1 x 2	2.25	1.35
* 40/250	TDXA0291	1 x 2	1.80	1.08
60/250	TDA0300	1 x 2 1/2	2.55	1.53
80/250	TDA0310	1 x 3	2.70	1.62
* 100/250	TDXA0312	1 x 3	2.70	1.62
* 150/250	TDXA0315	1 3/4 x 2 1/2	3.10	1.86
* 200/250	TDXA0318	1 3/4 x 3	3.95	2.37
50/300	TDA0320	1 x 2 1/2	2.55	1.53
60/300	TDXA0324	1 x 2 1/2	2.65	1.59
80/300	TDA0330	1 x 3	3.20	1.92
* 80/300	TDXA0331	1 x 3	2.55	1.53
* 100/300	TDA0340	1 3/4 x 3	2.90	1.74
* 100/300	TDA0350	1 x 3 3/4	2.90	1.74
* 150/300	TDXA0355	1 3/4 x 3	3.50	2.10

SINGLE SECTION

Single Section Cap./Volts	Rotational Stock No.	Size—Ins. Dia. x Lgth.	List Price	Net Price
15/350	TDA0360	1 x 2	\$2.05	\$1.23
* 30/350	TDA0370	1 x 2	1.90	1.14
* 40/350	TDA0380	1 x 2 1/2	2.00	1.20
* 50/350	TDA0390	1 x 3	2.10	1.26
80/350	TDA0400	1 3/4 x 2 1/2	3.55	2.13
* 80/350	TDXA0401	1 3/4 x 2 1/2	2.80	1.68
125/350	TDA0410	1 3/4 x 3	4.55	2.73
* 125/350	TDXA0411	1 3/4 x 3	3.65	2.19
* 150/350	TDXA0415	1 3/4 x 3 3/4	3.95	2.37
80/400	TDA0420	1 3/4 x 3	3.70	2.22
* 10/450	TDA0430	1 x 2	1.55	.93
10/450	TDA0440	3/4 x 2	1.95	1.17
15/450	TDA0450	1 x 2	2.15	1.29
* 20/450	TDA0460	1 x 2	1.80	1.08
* 30/450	TDA0470	1 x 2 1/2	1.95	1.17
* 40/450	TDA0480	1 x 3	2.05	1.23
* 50/450	TDA0490	1 x 3 3/4	2.35	1.41
* 60/450	TDA0500	1 3/4 x 2 1/2	2.60	1.56
* 80/450	TDA0510	1 3/4 x 3	3.05	1.83
* 100/450	TDA0512	1 3/4 x 3	3.45	2.07
* 125/450	TDA0514	1 3/4 x 4 1/4	3.75	2.23
* 40/475	TDA0516	1 3/4 x 2	2.50	1.50
* 10/500	TDA0520	1 x 2	1.60	.96
* 20/500	TDA0530	1 x 2 1/2	1.85	1.11
25/500	TDA0532	1 x 2 1/2	2.45	1.47
30/500	TDA0540	1 x 3	2.50	1.50
* 30/500	TDXA0541	1 x 3	2.00	1.20
* 40/500	TDA0550	1 x 3 3/4	2.50	1.50
* 80/500	TDA0560	1 3/4 x 3 3/4	3.20	1.92
* 90/500	TDA0570	1 3/4 x 3 3/4	3.50	2.10

DUAL SECTION

Single Section Cap./Volts	Rotational Stock No.	Size—Ins. Dia. x Lgth.	List Price	Net Price
.5 Ohms 15,750 CPS.	TDB0010	1 3/4 x 2	4.90	2.94
2.5 Ohms 60 CPS.	TDB0020	1 3/4 x 2	4.80	2.88
1000-500/6 VNP	TDB0030	1 x 3 3/4	4.40	2.64
* 1000-1000/15	TDB0040	1 3/4 x 2 1/2	4.40	2.64
* 500-100/20	TDB0045	1 x 2	3.15	1.89
20-20/25	TDB0050	1 x 2	1.80	1.08
40-40/25	TDB0060	1 x 2	2.00	1.20
150-50/25	TDB0070	1 x 2	2.40	1.44
* 50-50/50	TDB0080	1 x 2	1.70	1.02
* 100-100/50	TDB0085	1 x 2	2.10	1.26
20-20/150	TDB0090	1 x 2	2.15	1.29
* 20-20/150	TDXB0091	1 x 2	1.70	1.02
* 30-20/150	TDB0100	1 x 2	2.20	1.32
30-30/150	TDB0110	1 x 2	1.85	1.11
* 40-20/150	TDB0120	1 x 2	1.80	1.08
* 40-30/150	TDB0130	1 x 2	1.85	1.11
40-40/150	TDB0140	1 x 2	2.40	1.44
* 40-40/150	TDXB0141	1 x 2	1.90	1.14
* 50-30/150	TDB0150	1 x 2	2.00	1.20
50-50/150	TDB0160	1 x 2 1/2	2.70	1.62
* 50-50/150	TDXB0161	1 x 2 1/2	2.15	1.29
* 60-60/150	TDXB0165	1 x 3	2.35	1.41
* 75-75/150	TDB0170	1 x 3	2.60	1.56
80-40/150	TDB0180	1 x 2 1/2	2.90	1.74
* 80-40/150	TDXB0181	1 x 2 1/2	2.30	1.38
* 80-80/150	TDXB0183	1 3/4 x 2	2.65	1.59
100-100/150	TDXB0184	1 3/4 x 2 1/2	4.05	2.43
* 125-100/150	TDXB0184.5	1 3/4 x 2 1/2	3.50	2.10
150-150/150	TDXB0185	1 3/4 x 3	4.40	2.64
200-5/150	TDB0186	1 3/4 x 2 1/2	3.40	2.04
* 200-125/150	TDXB0187	1 3/4 x 3 3/4	3.75	2.25
* 200-150/150	TDXB0188	1 3/4 x 3 3/4	3.75	2.25
* 200-200/150	TDXB0189	1 3/4 x 3 3/4	4.00	2.40
* 60-60/200	TDB0190	1 3/4 x 2	2.55	1.53
* 100-100/200	TDXB0194	1 3/4 x 3	3.50	2.10
* 200-5/200	TDXB0196	1 3/4 x 2 1/2	2.70	1.62
10-10/250	TDB0200	1 x 2	2.15	1.29
* 20-20/250	TDB0210	1 x 2	1.90	1.14
30-30/250	TDB0220	1 x 2 1/2	2.90	1.74



TWIST-PRONG BASE ELECTROLYTICS

★ PREFERRED TYPE

DUAL SECTION

DUAL SECTION

Single Section Cap./Volts	Rotational Stock No.	Size—Ins. Dia. x Lgth.	List Price	Net Price	Single Section Cap./Volts	Rotational Stock No.	Size—Ins. Dia. x Lgth.	List Price	Net Price
40-20/250	TDB0230	1 x 2½	\$2.75	\$1.65	40/350 20/25	TDB0620	1 x 2½	\$2.95	\$1.77
40-40/250	TDB0240	1 x 3	3.20	1.92	★ 35/400 100/50	TDB0623	1 x 3	2.60	1.56
★ 40-40/250	TDXB0241	1 x 3	2.50	1.50	★ 100/400 30/50	TDB0626	1½ x 3	3.90	2.34
80-40/250	TDXB0243	1½ x 2½	3.75	2.23	★ 10/450 20/25	TDB0630	1 x 2	1.70	1.02
★ 150-150/250	TDB0250	1½ x 4½	5.15	3.09	20/450 20/25	TDB0640	1 x 2	2.50	1.50
★ 200-200/250	TDXB0252	1½ x 4½	6.10	3.66	20/450 100/25	TDB0646	1 x 2½	2.75	1.65
40-40/300	TDXB0254	1 x 3	3.75	2.23	40/450 20/25	TDB0650	1 x 3	3.05	1.83
50-50/300	TDB0260	1½ x 2½	4.20	2.52	40/450 50/50	TDB0652	1 x 3½	3.75	2.23
80-40/300	TDXB0264	1½ x 2½	4.45	2.67	80/450 20/25	TDB0660	1½ x 3	4.25	2.53
★ 80-80/300	TDB0270	1½ x 3	4.05	2.43	10/450 100/50	TDB0670	1½ x 2	2.55	1.53
★ 120-20/300	TDB0280	1½ x 3	4.00	2.40	★ 20/450 50/250	TDB0674	1 x 3	2.80	1.68
120-40/300	TDB0282	1½ x 3½	5.45	3.27	★ 20/450 80/350	TDB0680	1½ x 3	3.65	2.19
★ 200-80/300	TDB0286	1½ x 3½	5.25	3.13	20/450 100/100	TDB0690	1½ x 2	3.30	1.98
★ 15-15/350	TDB0290	1 x 2	2.25	1.33	30/450 40/150	TDB0700	1½ x 2	3.15	1.89
20-20/350	TDB0300	1 x 2½	2.90	1.74	★ 30/450 200/150	TDB0705	1½ x 3	3.50	2.10
★ 30-30/350	TDB0310	1 x 3	2.90	1.74	★ 40/450 10/350	TDB0710	1½ x 2	2.60	1.56
★ 50-30/350	TDB0320	1½ x 2½	3.15	1.89	★ 50/450 100/50	TDB0715	1½ x 2½	3.00	1.80
★ 80-20/350	TDB0322	1 x 3½	3.50	2.10	★ 80/450 50/50	TDB0720	1½ x 3	3.50	2.10
★ 80-20/350	TDB0324	1½ x 2½	3.50	2.10	★ 80/450 100/50	TDB0722	1½ x 3½	3.75	2.23
★ 80-40/350	TDB0326	1½ x 3	3.95	2.37	★ 20/475 100/400	TDB0726	1½ x 4½	4.50	2.70
★ 80-80/350	TDB0330	1½ x 3½	4.70	2.82	15/500 20/300	TDB0730	1 x 2½	2.90	1.74
★ 90-40/350	TDB0331	1½ x 3	4.30	2.58	20/500 100/300	TDB0740	1½ x 3	4.95	2.97
★ 100-100/350	TDB0332	1½ x 4½	6.15	3.69	40/500 50/200	TDB0750	1½ x 2½	4.20	2.52
★ 160-10/350	TDB0334	1½ x 3½	4.30	2.58	60/500 80/150	TDB0760	1½ x 3½	4.70	2.82
★ 40-120/400	TDB0336	1½ x 4½	5.25	3.15	80/500 50/50	TDB0770	1½ x 3½	4.75	2.85
60-60/400	TDB0340	1½ x 3½	5.50	3.30					
80-10/400	TDB0350	1½ x 3	4.25	2.55					
★ 80-60/400	TDB0354	1½ x 3½	4.85	2.91					
★ 80-80/400	TDB0356	1½ x 4½	4.95	2.97					
4-4/450	TDB0360	1 x 2	2.05	1.23					
★ 5-5/450	TDB0362	1 x 2	1.60	.96					
★ 10-10/450	TDB0370	1 x 2	1.90	1.14					
15-10/450	TDB0374	1 x 2½	2.55	1.53					
★ 15-15/450	TDB0380	1 x 2½	2.25	1.33					
★ 20-10/450	TDB0390	1 x 2½	2.25	1.33					
★ 20-20/450	TDB0400	1 x 3	2.55	1.53					
★ 30-10/450	TDB0410	1 x 3	2.50	1.50					
30-10/450	TDB0420	1½ x 2	3.00	1.80					
★ 30-30/450	TDB0430	1½ x 2½	3.05	1.83					
40-5/450	TDB0436	1 x 3	3.20	1.92					
★ 40-20/450	TDB0440	1½ x 2½	3.00	1.80					
★ 40-40/450	TDB0450	1½ x 3	3.45	2.07					
★ 50-50/450	TDXB0455	1½ x 3	3.85	2.31					
★ 60-20/450	TDB0460	1½ x 3	3.55	2.13					
★ 60-40/450	TDB0462	1½ x 3½	3.95	2.37					
60-60/450	TDB0464	1½ x 3½	5.65	3.39					
★ 80-10/450	TDB0470	1½ x 3	3.60	2.16					
★ 80-20/450	TDB0473	1½ x 3½	3.90	2.34					
★ 80-40/450	TDB0480	1½ x 3½	4.35	2.61					
★ 100-40/450	TDB0483	1½ x 4½	4.85	2.91					
★ 15-15/475	TDB0485	1 x 2½	2.35	1.41					
★ 30-10/475	TDB0486	1½ x 2	2.60	1.56					
★ 40-10/475	TDB0487	1½ x 2½	3.10	1.86					
★ 80-50/475	TDB0489	1½ x 4½	5.20	3.12					
★ 10-10/500	TDB0490	1 x 2½	1.95	1.17					
★ 20-20/500	TDB0500	1½ x 2½	2.85	1.71					
25-40/500	TDB0510	1½ x 3	4.55	2.73					
★ 30-10/500	TDB0520	1½ x 2½	2.60	1.56					
★ 40-40/500	TDB0530	1½ x 3½	4.40	2.64					
★ 60-40/500	TDB0540	1½ x 3½	4.60	2.76					
★ 250/10 1000/6	TDB0550	1½ x 2	2.85	1.71					
40/150 20/50	TDB0560	1 x 2	2.15	1.29					
40/150 150/25	TDB0570	1 x 2	2.55	1.53					
★ 50/150 500/5	TDB0574	1 x 2½	2.45	1.47					
★ 150/150 100/25	TDB0575	1½ x 2½	2.70	1.62					
60/200 125/50	TDB0576	1 x 3	3.00	1.80					
40/250 20/25	TDB0580	1 x 2	2.50	1.50					
50/250 100/50	TDB0590	1½ x 2	3.25	1.95					
★ 100/250 150/50	TDB0600	1½ x 3	3.65	2.19					
★ 35/300 500/6	TDXB0603	1 x 2½	2.80	1.68					
80/300 100/50	TDB0606	1½ x 2½	3.95	2.37					
★ 150/300 100/150	TDB0608	1½ x 3½	4.50	2.70					
20/350 20/25	TDB0610	1 x 2	2.40	1.44					
20/350 100/75	TDB0612	1 x 2½	2.80	1.68					

TRIPLE SECTION

★ 20-20-20/25	TDC0010	1 x 2	1.95	1.17
★ 40-40-40/25	TDC0020	1 x 2	2.15	1.29
30-30-30/50	TDC0030	1 x 2	3.25	1.93
20-20-20/150	TDC0040	1 x 2	3.55	2.13
★ 20-20-20/150	TDXC0041	1 x 2	2.30	1.38
30-30-10/150	TDC0050	1 x 2	3.55	2.13
★ 40-20-10/150	TDC0060	1 x 2	2.35	1.41
40-20-20/150	TDC0070	1 x 2	3.60	2.16
★ 40-20-20/150	TDXC0071	1 x 2	2.40	1.44
★ 40-30-20/150	TDC0080	1 x 2	2.50	1.50
★ 40-40-40/150	TDC0090	1 x 2½	2.60	1.56
★ 40-70-40/150	TDC0100	1 x 3	2.95	1.77
★ 50-40-10/150	TDC0103	1 x 2½	2.55	1.53
★ 50-50-50/150	TDXC0105	1 x 3	3.00	1.80
★ 60-40-20/150	TDC0110	1 x 2½	2.75	1.65
★ 70-15-15/150	TDC0113	1 x 2½	2.70	1.62
★ 80-40-20/150	TDC0120	1 x 3	2.90	1.74
80-80-80/150	TDXC0123	1½ x 3	5.65	3.39
★ 120-80-40/150	TDXC0125	1½ x 3	3.80	2.28
★ 120-120-40/150	TDXC0126	1½ x 3	4.05	2.43
★ 200-100-60/150	TDXC0127	1½ x 3½	4.55	2.73
★ 200-150-150/150	TDXC0128	1½ x 4½	7.50	4.50
★ 250-200-10/150	TDXC0129	1½ x 4½	5.60	3.36
20-20-10/250	TDC0130	1 x 2	3.75	2.23
★ 20-20-20/250	TDC0132	1 x 2	2.60	1.56
30-20-10/250	TDC0140	1 x 2½	4.05	2.43
40-20-10/250	TDC0150	1½ x 2	4.30	2.58
★ 40-20-20/250	TDC0160	1 x 3	2.90	1.74
★ 80-80-60/250	TDC0170	1½ x 3½	4.90	2.94
20-80-10/300	TDC0180	1½ x 2½	5.70	3.42
★ 60-20-10/300	TDC0190	1½ x 2½	3.45	2.07
★ 80-40-40/300	TDC0194	1½ x 3	4.75	2.85
★ 120-50-40/300	TDC0200	1½ x 4½	5.65	3.39
★ 10-10-10/350	TDC0210	1 x 2	2.40	1.44
20-20-10/350	TDC0220	1 x 3	4.45	2.67
★ 30-20-10/350	TDC0225	1 x 3	3.25	1.93
★ 60-40-20/350	TDC0230	1½ x 3	4.25	2.53
60-40-40/350	TDC0232	1½ x 3½	7.05	4.23
★ 60-50-50/350	TDC0234	1½ x 3½	4.90	2.94
★ 80-60-60/350	TDC0236	1½ x 4½	5.55	3.33
★ 90-40-20/350	TDC0237	1½ x 3½	5.25	3.15
★ 100-100-10/350	TDC0238	1½ x 4½	5.50	3.30
★ 80-20-10/400	TDC0239	1½ x 3	4.30	2.58
★ 90-10-5/400	TDC0239.2	1½ x 3	4.40	2.64
★ 10-10-10/450	TDC0240	1 x 2½	2.60	1.56
15-15-10/450	TDC0250	1 x 3	4.45	2.67
★ 15-15-15/450	TDC0254	1 x 3	3.10	1.86



TWIST-PRONG BASE ELECTROLYTICS

★ PREFERRED TYPE TRIPLE SECTION

TRIPLE SECTION

Single Section Cap./Volts	Rotational Stock No.	Size—Ins. Dia. x Lgth.	List Price	Net Price	Single Section Cap./Volts	Rotational Stock No.	Size—Ins. Dia. x Lgth.	List Price	Net Price
★ 20-10-10/450	TDC0260	1 x 3	\$2.95	\$1.77	★ 200-20/300 10/100	TDC0735	1 3/8 x 4 1/4	\$4.90	\$2.94
★ 20-20-20/450	TDC0270	1 3/8 x 2 1/2	3.60	2.16	10-5/350 30/50	TDC0739	1 x 2 1/2	3.85	2.31
★ 30-20-20/450	TDC0280	1 3/8 x 3	3.85	2.31	10-5/350 150/50	TDC0740	1 x 3	4.05	2.43
30-30-20/450	TDC0290	1 3/8 x 3	6.15	3.69	10-10/350 20/25	TDC0750	1 x 2	3.40	2.04
★ 30-30-30/450	TDC0300	1 3/8 x 3	4.35	2.61	10-15/350 20/25	TDC0760	1 x 2	3.75	2.25
★ 30-60-10/450	TDC0310	1 3/8 x 3 3/8	4.50	2.70	★ 15-10/350 20/25	TDC0770	1 x 2	2.50	1.50
★ 40-10-10/450	TDC0320	1 3/8 x 3	3.35	2.01	★ 20-4/350 100/25	TDC0773	1 x 2 1/2	2.60	1.56
★ 40-30-20/450	TDC0330	1 3/8 x 3	4.30	2.58	★ 20-5/350 150/50	TDC0775	1 x 3	2.95	1.77
★ 40-40-10/450	TDC0340	1 3/8 x 3	4.20	2.52	★ 20-10/350 20/25	TDC0780	1 x 2	2.55	1.53
★ 40-40-20/450	TDC0344	1 3/8 x 3 3/8	4.45	2.67	★ 20-10/350 5/250	TDC0790	1 x 2	2.55	1.53
★ 40-40-40/450	TDC0350	1 3/8 x 3 3/8	4.90	2.94	★ 20-20/350 20/25	TDC0800	1 x 2 1/2	2.80	1.68
★ 50-40-30/450	TDC0355	1 3/8 x 3 3/8	4.90	2.94	30-5/350 100/200	TDC0806	1 3/8 x 2 1/2	6.00	3.60
★ 60-20-20/450	TDC0360	1 3/8 x 3 3/8	4.60	2.76	30-10/350 20/25	TDC0810	1 x 2 1/2	4.30	2.58
★ 60-40-20/450	TDC0365	1 3/8 x 3 3/8	5.00	3.00	30-10/350 20/250	TDC0820	1 x 3	4.60	2.76
★ 80-40-20/450	TDC0370	1 3/8 x 4 1/8	5.40	3.24	★ 30-20/350 20/25	TDC0830	1 x 3	3.10	1.86
★ 30-30-20/475	TDC0371	1 3/8 x 3	4.75	2.85	★ 30-20/350 100/150	TDC0835	1 3/8 x 2 1/2	4.00	2.40
★ 40-20-20/475	TDC0372	1 3/8 x 3	4.75	2.85	★ 30-30/350 20/25	TDC0840	1 3/8 x 2	3.40	2.04
★ 40-30-10/475	TDC0373	1 3/8 x 3	4.50	2.70	40-20/350 10/100	TDC0850	1 3/8 x 2	4.30	2.58
★ 40-30-30/475	TDC0374	1 3/8 x 3 3/8	5.15	3.09	20-40/350 10/150	TDC0860	1 x 3	4.80	2.88
★ 10-10-10/500	TDC0380	1 x 3	2.70	1.62	40-40/350 50/25	TDC0870	1 3/8 x 2 1/2	5.65	3.39
★ 30-20-20/500	TDC0390	1 3/8 x 3	4.20	2.52	★ 80-40/350 400/50	TDXC0874	1 3/8 x 4 1/8	5.65	3.39
★ 40-10-10/500	TDC0400	1 3/8 x 3	3.90	2.34	★ 100-60/350 20/250	TDC0875	1 3/8 x 4 1/8	5.50	3.30
★ 40-40-10/500	TDC0410	1 3/8 x 3 3/8	5.05	3.03	★ 20-20/400 10/350	TDC0876	1 x 3	3.00	1.80
★ 15-15/150 1200/1.5	TDC0420	1 x 2	3.00	1.80	30-10/400 150/50	TDC0880	1 3/8 x 2 1/2	5.10	3.06
20-20/150 20/25	TDC0430	1 x 2	3.30	1.98	★ 60-30/400 20/350	TDC0885	1 3/8 x 3	4.55	2.73
20-20/150 20/25	TDXC0431	1 x 2	3.30	1.98	★ 80-40/400 150/50	TDC0890	1 3/8 x 3 3/8	5.15	3.09
20-20/150 100/10	TDC0440	1 x 2	3.55	2.13	★ 100-10/400 20/50	TDC0894	1 3/8 x 3 3/8	4.50	2.70
20-20/150 250/10	TDC0450	1 x 2	3.90	2.34	★ 100-10/400 80/350	TDC0896	1 3/8 x 4 1/8	6.10	3.66
30-30/150 20/25	TDC0460	1 x 2	3.55	2.13	15-5/450 15/350	TDC0900	1 x 3	4.30	2.58
30-30/150 200/10	TDC0470	1 x 2	3.75	2.25	★ 10-10/450 20/25	TDC0910	1 x 2	2.40	1.44
40-20/150 20/25	TDC0480	1 x 2	3.45	2.07	★ 10-10/450 40/50	TDC0920	1 x 2 1/2	2.50	1.50
★ 40-20/150 20/25	TDXC0481	1 x 2	2.30	1.38	10-10/450 50/100	TDC0930	1 3/8 x 2	4.00	2.40
40-20/150 100/25	TDC0490	1 x 2	3.75	2.25	15-15/450 20/25	TDC0940	1 x 2 1/2	4.15	2.49
40-20/150 100/10	TDC0500	1 x 2	3.60	2.16	★ 15-15/450 40/25	TDC0945	1 x 2 1/2	2.75	1.65
★ 40-20/150 200/25	TDC0510	1 x 2 1/2	2.70	1.62	15-15/450 10/300	TDC0950	1 x 3	4.35	2.61
★ 40-20/150 200/10	TDC0520	1 x 2	2.40	1.44	★ 20-10/450 20/25	TDC0960	1 x 2 1/2	2.70	1.62
40-20/150 250/10	TDC0530	1 x 2	4.05	2.43	★ 20-10/450 50/50	TDC0970	1 x 3	2.85	1.71
40-30/150 20/25	TDC0540	1 x 2	3.55	2.13	20-15/450 20/25	TDC0980	1 x 3	4.35	2.61
40-40/150 20/25	TDC0550	1 x 2	3.60	2.16	★ 20-20/450 20/25	TDC0990	1 x 3	3.05	1.83
★ 40-40/150 20/25	TDXC0551	1 x 2	2.40	1.44	20-20/450 100/50	TDC0992	1 3/8 x 2 1/2	5.25	3.15
★ 40-40/150 250/25	TDXC0555	1 x 3	3.15	1.89	20-20/450 60/350	TDC1000	1 3/8 x 3	6.10	3.66
★ 50-30/150 20/25	TDC0560	1 x 2	2.50	1.50	★ 30-10/450 150/50	TDC1005	1 3/8 x 2 1/2	3.50	2.10
★ 50-30/150 100/25	TDC0570	1 x 2 1/2	2.70	1.62	30-20/450 30/150	TDC1010	1 3/8 x 2 1/2	5.25	3.15
★ 50-50/150 20/25	TDC0580	1 x 2 1/2	2.65	1.59	★ 30-30/450 20/25	TDC1020	1 3/8 x 2 1/2	3.55	2.13
60-20/150 20/25	TDC0590	1 x 2	3.85	2.31	30-30/450 40/50	TDC1030	1 3/8 x 3	5.50	3.30
60-40/150 20/25	TDC0600	1 x 2 1/2	4.00	2.40	★ 30-30/450 125/25	TDC1034	1 3/8 x 3	3.95	2.37
★ 80-30/150 300/10	TDXC0602	1 3/8 x 2	3.15	1.89	★ 35-25/450 100/50	TDC1036	1 3/8 x 3	3.95	2.37
80-30/150 300/25	TDXC0604	1 3/8 x 2 1/2	5.50	3.30	★ 40-10/450 100/50	TDC1040	1 3/8 x 3	4.30	2.58
★ 80-40/150 20/25	TDC0610	1 x 2 1/2	2.80	1.68	★ 40-10/450 80/200	TDC1050	1 3/8 x 3	3.90	2.34
★ 80-40/150 300/25	TDXC0613	1 3/8 x 2 1/2	3.70	2.22	★ 40-20/450 20/25	TDC1060	1 3/8 x 2 1/2	3.50	2.10
★ 80-60/150 250/10	TDXC0615	1 3/8 x 2 1/2	3.40	2.04	★ 40-40/450 20/25	TDC1070	1 3/8 x 3	3.95	2.37
★ 100-80/150 200/10	TDXC0618	1 3/8 x 2 1/2	3.60	2.16	★ 40-40/450 40/25	TDC1080	1 3/8 x 3	3.95	2.37
120-60/150 20/25	TDC0620	1 3/8 x 2 1/2	5.05	3.03	★ 40-40/450 100/50	TDC1090	1 3/8 x 3 3/8	4.30	2.58
★ 300-80/150 200/50	TDC0626	1 3/8 x 4 1/8	4.95	2.97	★ 40-40/450 40/150	TDC1100	1 3/8 x 3 3/8	4.10	2.46
30-20/200 20/25	TDC0630	1 x 2	3.85	2.31	★ 40-40/450 60/200	TDC1102	1 3/8 x 3 3/8	4.45	2.67
★ 30-20/200 40/150	TDC0632	1 x 2 1/2	2.70	1.62	★ 40-40/450 80/350	TDC1103	1 3/8 x 4 1/8	5.55	3.33
40-80/200 100/50	TDC0634	1 3/8 x 3	5.25	3.15	★ 50-5/450 50/350	TDC1103.5	1 3/8 x 3 3/8	4.25	2.55
★ 60-5/200 20/50	TDC0636	1 x 2 1/2	2.50	1.50	★ 60-40/450 75/50	TDC1104	1 3/8 x 3 3/8	4.60	2.76
100-10/200 40/50	TDC0640	1 3/8 x 2	4.75	2.85	★ 80-10/450 125/25	TDC1106	1 3/8 x 3 3/8	4.40	2.64
★ 15-15/250 20/25	TDC0650	1 x 2	2.35	1.41	★ 80-20/450 100/50	TDC1108	1 3/8 x 4 1/8	4.80	2.88
20-15/250 20/25	TDC0660	1 x 2	3.55	2.13	★ 80-40/450 100/25	TDC1110	1 3/8 x 4 1/8	5.10	3.06
★ 30-30/250 20/25	TDC0670	1 x 2 1/2	2.80	1.68	★ 20-10/475 100/400	TDC1114	1 3/8 x 4 1/8	5.25	3.15
40-40/250 10/200	TDC0674	1 x 3	4.45	2.67	10-10/500 100/50	TDC1120	1 x 3	4.30	2.58
70-70/250 20/50	TDC0680	1 3/8 x 3	5.85	3.51	10-10/500 4/350	TDC1130	1 x 2 1/2	3.75	2.25
80-80/250 10/450	TDC0690	1 3/8 x 3 3/8	6.30	3.78	★ 20-10/500 100/50	TDC1150	1 x 3 3/8	3.70	1.98
★ 90-90/250 20/50	TDC0695	1 3/8 x 3	4.60	2.76	20-20/500 60/400	TDC1160	1 3/8 x 3 3/8	7.20	4.32
10-10/300 15/250	TDC0700	1 x 2	3.70	2.22	★ 20-20/500 60/450	TDC1162	1 3/8 x 3 3/8	4.85	2.91
20-20/300 20/25	TDC0710	1 x 2	4.15	2.49	★ 40/475 80-10/450	TDC1167	1 3/8 x 4 1/8	5.50	3.30
30-30/300 25/50	TDC0720	1 x 3	4.35	2.61	30-10/500 20/50	TDC1170	1 3/8 x 2 1/2	4.65	2.79
40-15/300 20/25	TDC0730	1 x 3	4.45	2.67	★ 40-40/500 100/200	TDC1180	1 3/8 x 4 1/8	5.85	3.51
40-20/300 20/25	TDXC0732	1 x 2 1/2	4.65	2.79	100/100 50-25/25	TDC1190	1 x 3	4.00	2.40
★ 100-10/300 60/50	TDC0733	1 3/8 x 2 1/2	4.05	2.43	20/150 250-100/15	TDC1200	1 3/8 x 2	4.35	2.61
★ 140-10/300 200/150	TDC0734	1 3/8 x 4 1/8	5.50	3.30	★ 60/200 200-140/150	TDXC1202	1 3/8 x 4 1/8	4.80	2.88
★ 140-100/300 60/50	TDC0734.3	1 3/8 x 4 1/8	6.05	3.63	★ 10/300 500-500/15	TDXC1204	1 3/8 x 2 1/2	3.90	2.34



TWIST-PRONG BASE ELECTROLYTICS

★ PREFERRED TYPE TRIPLE SECTION

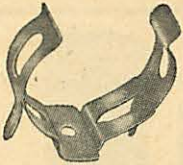
QUADRUPLE SECTION

Single Section Cap./Volts	Rotational Stock No.	Size—Ins. Dia. x Lgth.	List Price	Net Price	Single Section Cap./Volts	Rotational Stock No.	Size—Ins. Dia. x Lgth.	List Price	Net Price
★ 20/300 150-80/150	TDC1206	1 1/2 x 3	\$3.95	\$2.37	10-10-10-10/350	TDD0030	1 1/2 x 2	\$4.65	\$2.79
★ 100/300 200-30/150	TDXC1207	1 1/2 x 4 1/2	5.05	3.03	★ 40-20-20-10/350	TDD0032	1 1/2 x 2 1/2	4.35	2.61
★ 100/300 200-60/150	TDXC1208	1 1/2 x 4 1/2	5.55	3.33	★ 40-40-40-40/350	TDD0034	1 1/2 x 3 1/2	6.00	3.60
100/300 60-20/250	TDXC1209	1 1/2 x 4 1/2	7.35	4.41	80-10-10-10/350	TDD0040	1 1/2 x 3 1/2	6.90	4.14
120/300 15-10/450	TDC1210	1 1/2 x 3 1/2	6.75	4.05	100-40-10-10/350	TDD0044	1 1/2 x 3 1/2	7.60	4.56
★ 200/300 60-20/250	TDXC1212	1 1/2 x 5	5.80	3.48	100-40-10-10/350	TDD0046	1 1/2 x 4 1/2	7.90	4.74
4/350 100-40/25	TDC1214	1 x 2	3.40	2.04	30-30-20-20/400	TDD0050	1 1/2 x 3	7.30	4.38
30/350 20-10/250	TDC1220	1 x 3	4.50	2.70	★ 50-40-30-20/400	TDD0054	1 1/2 x 4 1/2	5.50	3.30
★ 40/350 200-100/150	TDC1224	1 1/2 x 3 1/2	5.00	3.00	80-10-10-10/400	TDD0058	1 1/2 x 3 1/2	7.05	4.23
★ 60/350 200-30/150	TDC1226	1 1/2 x 3 1/2	4.40	2.64	★ 80-20-10-10/400	TDD0060	1 1/2 x 3 1/2	5.05	3.03
80/400 20-10/300	TDC1230	1 1/2 x 3 1/2	6.40	3.84	4-4-4-4/450	TDD0070	1 1/2 x 2	4.35	2.61
★ 5/450 80-40/300	TDC1231	1 1/2 x 3	4.15	2.49	★ 5-5-5-5/450	TDD0080	1 1/2 x 2	3.00	1.80
10/450 20-10/25	TDC1232	1 x 2	3.25	1.95	10-10-10-5/450	TDD0088	1 1/2 x 2	4.90	2.94
★ 10/450 80-80/250	TDC1236	1 1/2 x 3 1/2	4.20	2.52	★ 10-10-10-10/450	TDD0090	1 1/2 x 2	3.35	2.01
20/450 40-10/250	TDC1240	1 1/2 x 2	4.75	2.85	15-30-30-10/450	TDD0100	1 1/2 x 3	7.05	4.23
★ 20/450 40-10/350	TDC1243	1 1/2 x 2 1/2	3.50	2.10	15-30-30-30/450	TDD0110	1 1/2 x 3 1/2	7.95	4.77
★ 20/450 80-10/350	TDC1246	1 1/2 x 3 1/2	4.25	2.55	★ 20-10-10-10/450	TDD0120	1 1/2 x 2 1/2	3.70	2.22
30/450 100-25/25	TDC1250	1 1/2 x 2	4.50	2.70	★ 20-20-20-20/450	TDD0130	1 1/2 x 3	4.70	2.82
★ 40/450 90-50/150	TDC1260	1 1/2 x 3	3.95	2.37	★ 30-15-15-15/450	TDD0140	1 1/2 x 3	4.45	2.67
60/450 40-20/350	TDC1261	1 1/2 x 3 1/2	6.90	4.14	★ 30-30-20-20/450	TDD0144	1 1/2 x 3 1/2	5.20	3.12
★ 80/450 40-40/250	TDC1262	1 1/2 x 4 1/2	4.95	2.97	★ 35-35-10-5/450	TDD0150	1 1/2 x 3 1/2	4.65	2.79
80/450 100-20/30	TDC1263	1 1/2 x 3 1/2	6.40	3.84	★ 40-10-10-10/450	TDD0160	1 1/2 x 3	4.15	2.49
40/475 40-10/250	TDC1265	1 1/2 x 2 1/2	6.00	3.60	★ 40-20-10-10/450	TDD0170	1 1/2 x 3	4.45	2.67
40/475 80-10/300	TDC1266	1 1/2 x 3 1/2	7.20	4.32	★ 40-35-10-10/450	TDD0171	1 1/2 x 3	4.80	2.88
40/475 20-20/450	TDC1268	1 1/2 x 3	6.75	4.05	★ 40-40-4-4/450	TDD0172	1 1/2 x 3 1/2	4.70	2.82
10/500 80-10/150	TDC1269	1 x 3 1/2	4.30	2.58	★ 40-40-20-20/450	TDD0174	1 1/2 x 4 1/2	5.55	3.33
40/150 25/25 130/15	TDC1270	1 x 3	3.55	2.13	★ 40-40-30-30/450	TDD0176	1 1/2 x 4 1/2	6.05	3.63
50/150 100/50 20/25	TDC1274	1 x 3	4.30	2.58	★ 40-40-40-40/450	TDD0177	1 1/2 x 5	6.45	3.87
★ 80/250 40/150 50/50	TDC1280	1 1/2 x 2 1/2	2.35	1.41	★ 60-20-20-20/450	TDD0177.4	1 1/2 x 4 1/2	5.65	3.39
100/300 60/150 20/50	TDC1290	1 1/2 x 3	6.30	3.78	★ 60-30-10-2/450	TDD0177.6	1 1/2 x 3 1/2	5.10	3.06
★ 20/350 50/100 100/75	TDC1300	1 x 3	3.10	1.86	70-10-10-5/450	TDD0178	1 1/2 x 3 1/2	7.15	4.29
★ 30/350 30/300 20/25	TDC1310	1 x 3	3.15	1.89	★ 80-10-10-10/450	TDD0179	1 1/2 x 3 1/2	5.05	3.03
50/350 10/250 500/5	TDC1320	1 1/2 x 2 1/2	5.40	3.24	★ 20-20-10-10/475	TDD0179.3	1 1/2 x 2 1/2	4.35	2.61
★ 125/350 5/200 100/75	TDC1325	1 1/2 x 3 1/2	5.30	3.18	★ 20-20-20-20/475	TDD0179.5	1 1/2 x 3	5.20	3.12
10/400 50/350 30/25	TDC1330	1 x 3	4.65	2.79	★ 40-20-10-10/475	TDD0179.7	1 1/2 x 3	5.10	3.06
40/400 80/350 100/200	TDC1336	1 1/2 x 3 1/2	7.95	4.77	★ 10-10-10-10/500	TDD0180	1 1/2 x 2	3.50	2.10
60/400 40/300 20/25	TDC1340	1 1/2 x 3 1/2	6.30	3.78	★ 40-40-8-8/500	TDD0185	1 1/2 x 3 1/2	5.70	3.42
10/450 50/150 100/25	TDC1350	1 x 3	4.15	2.49	20-20-20/150 20/25	TDD0190	1 1/2 x 2	4.35	2.61
★ 10/450 50/150 100/75	TDC1355	1 x 3	3.25	1.95	30-20-20/150 200/10	TDD0200	1 1/2 x 2	4.65	2.79
★ 10/450 40/300 10/150	TDC1360	1 1/2 x 2	3.10	1.86	★ 30-30-30/150 40/25	TDD0210	1 1/2 x 2	3.10	1.86
10/450 40/350 100/50	TDC1366	1 1/2 x 3 1/2	5.10	3.06	★ 40-20-20/150 20/25	TDD0220	1 1/2 x 2	2.95	1.77
10/450 30/400 30/300	TDC1370	1 1/2 x 2 1/2	5.05	3.03	★ 40-40-20/150 200/10	TDD0230	1 1/2 x 2	3.25	1.95
15/450 20/350 20/250	TDC1380	1 x 3	4.50	2.70	★ 40-40-30/150 20/25	TDD0240	1 1/2 x 2	3.10	1.86
★ 20/450 80/200 50/50	TDC1385	1 1/2 x 2 1/2	3.40	2.04	★ 40-40-40/150 20/25	TDD0250	1 1/2 x 2	3.15	1.89
★ 20/450 60/250 100/25	TDC1390	1 1/2 x 2 1/2	3.65	2.19	40-40-40/150 100/25	TDD0260	1 1/2 x 2	5.05	3.03
20/450 15/350 10/300	TDC1400	1 x 3	4.60	2.76	★ 40-40-40/150 160/25	TDD0270	1 1/2 x 2	3.55	2.13
20/450 80/350 100/50	TDC1410	1 1/2 x 3 1/2	6.75	4.05	★ 50-20-20/150 200/25	TDD0275	1 1/2 x 2	3.50	2.10
★ 30/450 15/350 40/25	TDC1412	1 1/2 x 2	2.40	1.44	★ 50-30-30/150 100/25	TDD0280	1 1/2 x 2	3.45	2.07
★ 30/450 40/350 50/25	TDC1414	1 x 4 1/2	3.70	2.22	★ 50-50-50/150 20/25	TDD0290	1 1/2 x 2	3.55	2.13
30/450 50/400 40/25	TDC1420	1 1/2 x 3	5.95	3.57	★ 60-40-20/150 200/10	TDD0300	1 1/2 x 2	3.50	2.10
★ 40/450 40/150 130/50	TDC1430	1 1/2 x 3	3.75	2.25	75-75-75/150 30/25	TDD0310	1 1/2 x 3	6.45	3.87
★ 40/450 100/150 50/50	TDC1440	1 1/2 x 3	5.95	3.57	80-40-40/150 20/25	TDD0320	1 1/2 x 2	5.35	3.21
40/450 50/350 50/300	TDC1442	1 1/2 x 4 1/2	7.30	4.38	★ 80-40-40/150 40/25	TDD0325	1 1/2 x 2	3.60	2.16
★ 60/450 80/400 20/350	TDC1443	1 1/2 x 4 1/2	5.65	3.39	★ 80-40-40/150 100/25	TDD0330	1 1/2 x 2 1/2	3.75	2.25
★ 10/475 4/350 40/250	TDC1444	1 1/2 x 2	3.00	1.80	★ 100-90-60/150 200/25	TDD0336	1 1/2 x 3	4.95	2.97
10/475 4/350 100/50	TDC1445	1 x 2 1/2	4.50	2.70	★ 200-200-100/150 10/75	TDD0338	1 1/2 x 4 1/2	5.95	3.57
★ 10/475 40/450 100/200	TDC1445.3	1 1/2 x 3	4.20	2.52	80-20-10/250 20/25	TDD0340	1 1/2 x 2	5.10	3.06
★ 20/475 50/50 20/25	TDC1446	1 x 3	2.75	1.65	80-60-40/250 20/150	TDD0350	1 1/2 x 3 1/2	7.65	4.59
20/475 10/350 5/150	TDC1448	1 x 2 1/2	4.90	2.94	★ 100-40-10/250 100/50	TDD0360	1 1/2 x 3 1/2	5.15	3.09
★ 80/475 80/150 50/50	TDC1449	1 1/2 x 4 1/2	4.85	2.91	★ 40-20-20/300 25/25	TDD0367	1 1/2 x 2	4.00	2.40
10/500 100/200 40/50	TDC1450	1 1/2 x 2 1/2	5.05	3.03	★ 40-40-40/300 20/150	TDD0370	1 1/2 x 3	4.90	2.94
20/500 20/300 40/25	TDC1460	1 1/2 x 2	4.65	2.79	★ 60-40-20/300 50/25	TDD0380	1 1/2 x 3	4.65	2.79
40/500 40/250 100/50	TDC1470	1 1/2 x 3	6.45	3.87	★ 120-40-40/300 10/250	TDD0385	1 1/2 x 4 1/2	6.15	3.69
40/500 40/400 25/50	TDC1480	1 1/2 x 3	6.45	3.87	★ 150-20-10/300 250/50	TDD0387	1 1/2 x 4 1/2	6.05	3.63
					10-10-10/350 20/25	TDD0390	1 1/2 x 2	4.45	2.67
					15-15-15/350 50/50	TDD0400	1 1/2 x 2	5.70	3.42
					★ 20-10-5/350 20/25	TDD0410	1 1/2 x 2	3.10	1.86
					★ 30-10-5/350 200/25	TDD0414	1 1/2 x 2	3.80	2.28
					★ 30-10-5/350 100/200	TDD0416	1 1/2 x 2 1/2	4.40	2.64
					★ 30-20-5/350 100/200	TDD0418	1 1/2 x 3	4.70	2.82
					30-20-20/350 20/25	TDD0420	1 1/2 x 2 1/2	6.15	3.69
					★ 40-40-20/350 20/25	TDD0430	1 1/2 x 3	4.70	2.82
					★ 40-40-30/350 10/25	TDD0433	1 1/2 x 3	4.95	2.97
					40-20-20/350 25/25	TDD0440	1 1/2 x 2 1/2	6.40	3.84

QUADRUPLE SECTION



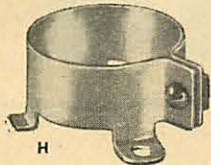
MOUNTING HARDWARE



UNIVERSAL CLIPS



MOUNTING CLIPS



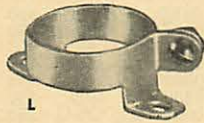
H
MOUNTING RINGS



"C" CLAMPS



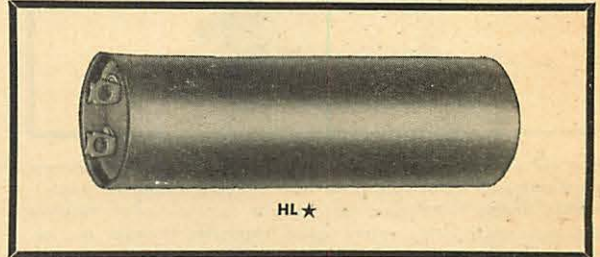
MOUNTING STRAPS



L

Part No.	Description	List Price	Sug- gested Resale
12125	Mounting Ring for 1 3/8" dia. Cans.....L....	\$.20	\$.12
13590	Mounting Ring for 2 1/2" dia. Cans.....L....	.50	.30
13591	Mounting Ring for 3" dia. Cans.....L....	.50	.30
14464	Mounting Ring for 2" dia. Cans.....L....	.50	.30
14582	Mounting Ring for 1" dia. Cans.....L....	.20	.12
15266	Mounting Ring for 3 1/2" dia. Cans.....L....	.50	.30
15591	Mounting Ring for 1 1/2" dia. Cans.....L....	.30	.18
16279	Tubular Mounting Straps, 3/16" ID.....	.15	.09
16280	Tubular Mounting Straps, 1/2" ID.....	.15	.09
16285	Tubular Mounting Straps, 1 1/16" ID.....	.15	.09
16693	Mounting Ring for 1 3/4" dia. Cans.....L....	.40	.24
17203	Tubular Mounting Straps, 5/16" ID.....	.15	.09
17516	Tubular Mounting Straps, 3/8" ID.....	.15	.09
17517	Tubular Mounting Straps, 3/4" ID.....	.15	.09
17842	Mounting Ring for 1" dia. Cans.....H....	.20	.12
17843	Mounting Ring for 1 3/4" dia. Cans.....H....	.20	.12
17844	Mounting Ring for 1 1/2" dia. Cans.....H....	.30	.18
17920	"C" Clamp for 3/8"-3/4" Cans or Tubulars....	.30	.18
17921	"C" Clamp for 7/8"-1" Cans or Tubulars....	.30	.18
18573	Mounting Ring for 1 1/4" dia. Cans.....H....	.20	.12
19213	Mounting Ring for 1 1/8" dia. Cans.....H....	.20	.12
19883	Metal Washer for 1".....	.14	.08
19884	Bakelite Washer for 1".....	.14	.08
19887	Metal Washer for 1 3/8".....	.14	.08
19888	Bakelite Washer for 1 3/8".....	.14	.08
19890	Metal Washer for 3/4".....	.14	.08
19891	Bakelite Washer for 3/4".....	.14	.08
21368-1	Mounting Clip for 3/4".....	.30	.18
21368-2	Mounting Clip for 1".....	.30	.18
21368-3	Mounting Clip for 1 3/8".....	.30	.18
22272	Wrench for Mounting Units.....	2.48	1.49
27886	Tubular Mounting Straps, 7/8" ID.....	.15	.09
28521-1	Insulating Tube for 3/4" x 2".....	.14	.08
28521-4	Insulating Tube for 1" x 2".....	.14	.08
28521-5	Insulating Tube for 1" x 2 1/2".....	.14	.08
28521-6	Insulating Tube for 1" x 3".....	.14	.08
28521-7	Insulating Tube for 1 3/8" x 2".....	.14	.08
28521-8	Insulating Tube for 1 3/8" x 2 1/2".....	.14	.08
28521-9	Insulating Tube for 1 3/8" x 3".....	.14	.08
28521-12	Insulating Tube for 1 3/8" x 3 3/8".....	.14	.08
28521-15	Insulating Tube for 1 3/8" x 4 1/8".....	.14	.08
28521-19	Insulating Tube for 1" x 3 3/8".....	.14	.08
30010-1	Universal Clips, 3/8"-7/16" Cans or Tubulars..	.30	.18
30010-2	Universal Clips, 1/2"-9/16" Cans or Tubulars..	.30	.18
30010-3	Universal Clips, 5/8"-1 1/16" Cans or Tubulars..	.30	.18
30010-4	Universal Clips, 3/4"-1 5/16" Cans or Tubulars..	.30	.18
30010-5	Universal Clips, 7/8"-1 3/8" Cans or Tubulars..	.30	.18
30010-6	Universal Clips, 1" -1 1/16" Cans or Tubulars..	.30	.18
30010-7	Universal Clips, 1 3/8"-1 13/16" Cans or Tubulars..	.30	.18
30035	Bakelite Washer for 1" in 1 3/8" Hole Mounting.	.14	.08
30036	Metal Washer for 1" in 1 3/8" Hole Mounting.	.14	.08

HIGH-CAPACITY LOW-VOLTAGE ELECTROLYTICS



HL★

Type HL capacitors in round cardboard sleeved aluminum cans are designed for high capacity, low voltage applications, and are especially popular as replacements in motion picture sound equipment, and other low voltage circuits.

TEMPERATURE RANGE to +85°C.

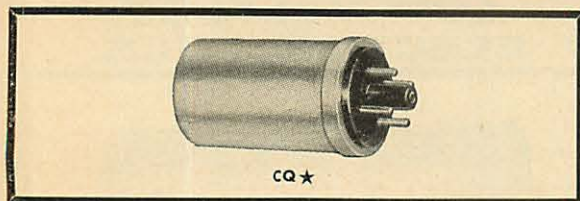
HL Cat. No.	Cap. Mfd.	D.C. W. Volts	Can†† Size—Inches Dia. x Lgth.	List Price	Net Price
HL 1005	500	10	1 3/8 x 2 3/8	\$3.10	\$1.86
HL 1010	1000	10	1 3/8 x 2 3/8	3.55	2.13
HL 1015	1500	10	1 3/8 x 2 3/8	3.75	2.25
HL 1020	2000	10	1 3/8 x 2 3/8	3.95	2.37
HL 1030	3000	10	1 3/8 x 2 3/8	4.35	2.61
HL 1040	4000	10	1 3/8 x 4 1/8	4.75	2.85
HL 1050	5000	10	1 1/2 x 4 1/8	5.15	3.09
HL 1060	6000	10	1 3/4 x 4 1/8	7.50	4.50
HL 1205	500	12	1 3/8 x 2 3/8	3.20	1.92
HL 1210	1000	12	1 3/8 x 2 3/8	3.75	2.25
HL 1215	1500	12	1 3/8 x 2 3/8	3.95	2.37
HL 1220	2000	12	1 3/8 x 3 1/8	4.15	2.49
HL 1225	2500	12	1 3/8 x 3 1/8	4.85	2.91
HL 1230	3000	12	1 3/8 x 4 1/8	5.05	3.03
HL 1240	4000	12	1 1/2 x 4 1/8	5.25	3.15
HL 1260	6000	12	2 x 4 1/8	9.35	5.61
HL 1505	500	15	1 3/8 x 2 3/8	3.25	1.95
HL 1510	1000	15	1 3/8 x 2 3/8	3.80	2.28
HL 1515	1500	15	1 3/8 x 2 3/8	4.00	2.40
HL 1520	2000	15	1 3/8 x 2 3/8	4.70	2.82
HL 1530	3000	15	1 3/8 x 4 1/8	5.15	3.09
HL 1540	4000	15	1 1/2 x 4 1/8	8.10	4.86
HL 1560	6000	15	2 x 4 1/8	10.00	6.00
HL 1805	500	18	1 3/8 x 2 3/8	3.00	1.80
HL 1810	1000	18	1 3/8 x 2 3/8	3.90	2.34
HL 1820	2000	18	1 3/8 x 3 1/8	4.90	2.94
HL 1840	4000	18	1 1/2 x 4 1/8	8.45	5.07
HL 2005	500	20	1 3/8 x 2 3/8	3.40	2.04
HL 2010	1000	20	1 3/8 x 3 1/8	4.10	2.46
HL 2020	2000	20	1 3/8 x 4 1/8	5.20	3.12
HL 2040	4000	20	2 x 4 1/8	8.75	5.25
HL 2505	500	25	1 3/8 x 2 3/8	3.55	2.13
HL 2510	1000	25	1 3/8 x 3 1/8	4.80	2.88
HL 2520	2000	25	1 3/8 x 4 1/8	5.75	3.45
HL 2530	3000	25	1 3/4 x 4 1/8	8.00	4.80
HL 2540	4000	25	2 x 4 1/8	9.50	5.70
HL 2550	5000	25	2 1/2 x 4 1/8	11.00	6.60
HL 3005	500	30	1 3/8 x 3 1/8	3.60	2.16
HL 3010	1000	30	1 3/8 x 4 1/8	4.90	2.94
HL 3020	2000	30	1 3/4 x 4 1/8	7.40	4.44
HL 3030	3000	30	2 x 4 1/8	8.95	5.37
HL 3040	4000	30	2 1/2 x 4 1/8	10.50	6.30
HL 3505	500	35	1 3/8 x 3 1/8	3.70	2.22
HL 3510	1000	35	1 3/8 x 4 1/8	5.00	3.00
HL 3520	2000	35	1 3/4 x 4 1/8	8.00	4.80
HL 3530	3000	35	2 x 4 1/8	9.50	5.70
HL 3540	4000	35	2 1/2 x 4 1/8	11.00	6.60
HL 4005	500	40	1 3/8 x 3 1/8	3.80	2.28
HL 4010	1000	40	1 3/8 x 4 1/8	6.50	3.90
HL 4020	2000	40	1 3/4 x 4 1/8	9.00	5.40
HL 4030	3000	40	2 x 4 1/8	10.50	6.30
HL 4040	4000	40	2 1/2 x 4 1/8	11.50	6.90
HL 5005	500	50	1 3/8 x 3 1/8	3.90	2.34
HL 5010	1000	50	1 3/8 x 4 1/8	7.00	4.20
HL 5020	2000	50	1 3/4 x 4 1/8	9.10	5.46
HL 5030	3000	50	2 x 4 1/8	11.50	6.90
HL 5040	4000	50	2 1/2 x 4 1/8	12.50	7.50

★ When JAN-C-62 units must be supplied, order according to specific CE type designations.

†† For Overall Size add 1/16" to Diam. and 3/8" to Length.



PLUG-IN ELECTROLYTIC



CQ★

Type CQ Capacitors are hermetically sealed in round aluminum containers with a four-pin octal base. Ideally suited for experimental, testing, juke box, government communication receiver uses and applications where quick capacitor changes are required. Ground lugs are furnished with all multiple-section units for cathode connection.

TEMPERATURE RANGE: to +85°C, except,
+65°C at 500 V.D.C.W.

SINGLES

CQ Cat. No.	Cap. Mfd.	D.C. W. Volts	Size—Inches Dia. x Lgth.	List Price	Net Price
CQ 1045	10	450	1 5/16 x 2 1/2	\$4.05	\$2.43
CQ 2045	20	450	1 5/16 x 2 1/2	4.30	2.58
CQ 4045	40	450	1 3/8 x 2 1/2	4.55	2.73
CQ 8045	80	450	1 3/8 x 3 1/2	5.55	3.33
CQ 4050	40	500	1 3/8 x 2 1/2	5.00	3.00

DUALS

CQ 2215	20-20	150	1 5/16 x 2 1/2	4.20	2.52
CQ 4415	40-40	150	1 5/16 x 2 1/2	4.40	2.64
CQ 5515	50-50	150	1 5/16 x 2 1/2	4.65	2.79
CQ 8815	80-80	150	1 3/8 x 2 1/2	5.15	3.09
CQ 1145	10-10	450	1 5/16 x 2 1/2	4.40	2.64
CQ 2245	20-20	450	1 3/8 x 2 1/2	5.05	3.03
CQ 3345	30-30	450	1 3/8 x 3	5.55	3.33
CQ 4445	40-40	450	1 3/8 x 3 1/2	5.90	3.54
CQ 2250	20-20	500	1 3/8 x 2 1/2	5.30	3.18

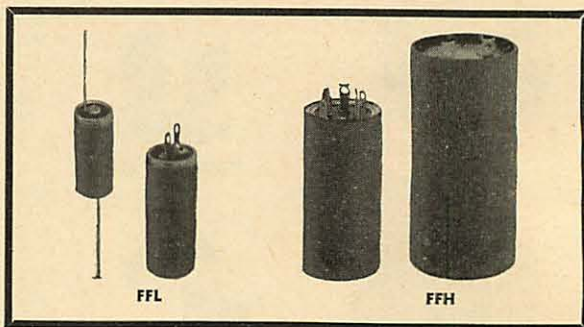
TRIPLES

CQ 22215	20-20-20	150	1 5/16 x 2 1/2	4.85	2.91
CQ 44415	40-40-40	150	1 3/8 x 2 1/2	5.10	3.06
CQ 11145	10-10-10	450	1 5/16 x 2 1/2	5.10	3.06
CQ 22245	20-20-20	450	1 3/8 x 3	6.10	3.66
CQ 4245C	40-20/20	450/25	1 3/8 x 3	6.00	3.60
CQ 11150	10-10-10	500	1 3/8 x 2 1/2	5.30	3.18

QUADRUPLES

CQ 11145C	10-10-10/20	450/25	1 3/8 x 2 1/2	5.65	3.39
CQ 33145C	30-30-10/20	450/50	1 3/8 x 4 1/4	6.85	4.11

PHOTOFLASH



FFL

FFH

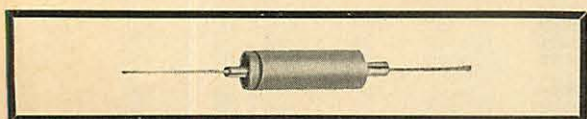
FFH Cat. No.	Cap. Mfd.	D.C. W. Volts	OVERALL Size—Inches Dia. x Length	Watt Seconds	List Price	Net Price
TDXB 0455	2 x 50	450	1 3/8 x 3	10	\$ 3.85	\$ 2.31
FFH 10063 (2)	200	450	2 1/16 x 4 1/2	20	6.85	4.11
FFH 10005 (3)	200	500	2 1/16 x 4 3/8	25	10.50	6.30
FFH 10007 (3)	300	450	2 1/16 x 4 3/8	30	10.50	6.30
FFH 10000 (5)	300	450	2 1/16 x 4 3/8	30	11.50	6.90
FFH 10300 (4)	400	450	2 1/16 x 4 1/2	40	17.95	10.77
FFH 10001 (5)	525	450	2 1/16 x 4 3/8	53	22.60	13.56

FFL Cat. No.	Cap. Mfd.	D.C. W. Volts	OVERALL Size—Inches Dia. x Length	List Price	Net Price
FFL 100001 (6)	40	150	3/4 x 1 7/16	\$1.35	\$.81
FFL 10077 (7)	100	30	1 x 2 1/16	3.35	2.01
FFL 10062 (8)	125	25	5/8 x 1 1/16	1.35	.81
FFL 10067 (6)	150	50	3/4 x 1 1/16	1.35	.81
JET 2502 (6)	250	25	7/8 x 1 1/16	1.70	1.02

PHYSICAL CHARACTERISTICS

- ① Aluminum Can—Cardboard Sleeve—Solder Lug Terms.—Twist Prong Mt.
- ② Aluminum Can—Cardboard Sleeve—Solder Lug Terms.
- ③ Bakelite Case—Solder Lug Terms.
- ④ Aluminum Can—Cardboard Sleeve—Screw Terms.
- ⑤ Bakelite Case—Screw Terms.
- ⑥ Aluminum Can—Tinned Wire Leads.
- ⑦ Aluminum Can—Solder Lug Terms.
- ⑧ Aluminum Can—Clip Mt. Terms.
- ⑨ Aluminum Can—Cardboard Sleeve—Mounting Strap

Ultra Small Aluminum-Cased Electrolytics



Type LE capacitors are ultra-small, compression sealed, aluminum foil units. They are housed in aluminum containers which in turn are covered by a skin-tight, clear plastic insulating sleeve. The tinned copper pigtails are securely anchored in crimped stud terminals.

They are especially recommended for use in printed circuit assemblies, miniature radios, recorders, hearing aids, portable TV cameras and similar compact equipments.

TEMPERATURE RANGE: -20°C. to +65°C.

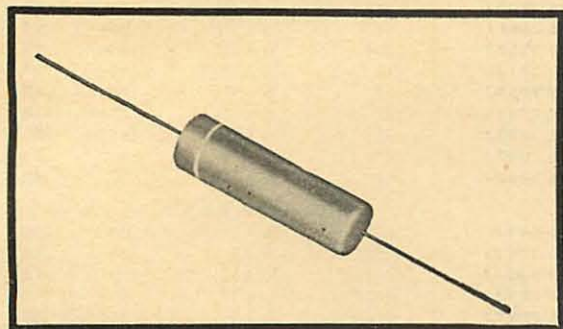
LE Cat. No.	Cap. Mfd.	WVDC	Can Size—Inches Diam. x Length	List Price	Net Price
LE 5-1	5	1	3/16 x 1/2	\$1.25	\$.75
LE 2-3	2	3	3/16 x 1/2	1.25	.75
LE 10-3	10	3	1/4 x 3/8	1.25	.75
LE 25-3	25	3	1/4 x 3/8	1.25	.75
LE 40-3	40	3	1/4 x 3/4	1.25	.75
LE 50-3	50	3	1/4 x 3/4	1.25	.75
LE 110-3	110	3	3/8 x 3/4	1.40	.84
LE 200-3	200	3	3/8 x 1	1.50	.90
LE 1-6	1	6	3/16 x 1/2	1.25	.75

LE Cat. No.	Cap. Mfd.	WVDC	Can Size—Inches Diam. x Length	List Price	Net Price
LE 2-6	2	6	3/16 x 1/2	\$1.25	\$.75
LE 3-6	3	6	3/16 x 1/2	1.25	.75
LE 4-6	4	6	3/16 x 3/8	1.25	.75
LE 5-6	5	6	3/16 x 3/8	1.25	.75
LE 8-6	8	6	1/4 x 3/8	1.35	.81
LE 10-6	10	6	1/4 x 3/8	1.35	.81
LE 15-6	15	6	1/4 x 3/8	1.35	.81
LE 20-6	20	6	1/4 x 3/8	1.35	.81
LE 25-6	25	6	1/4 x 3/8	1.35	.81
LE 30-6	30	6	3/8 x 3/8	1.40	.84
LE 40-6	40	6	3/8 x 3/8	1.40	.84
LE 50-6	50	6	3/8 x 3/8	1.40	.84
LE 60-6	60	6	3/8 x 3/4	1.40	.84
LE 100-6	100	6	3/8 x 7/8	1.50	.90
LE 10-10	10	10	1/4 x 3/8	1.35	.81
LE 15-10	15	10	1/4 x 3/8	1.35	.81
LE 25-10	25	10	3/8 x 3/8	1.35	.81
LE 50-10	50	10	3/8 x 3/4	1.45	.87
LE 100-10	100	10	3/8 x 1	1.60	.96
LE 5-15	5	15	1/4 x 3/8	1.40	.84
LE 10-15	10	15	1/4 x 3/8	1.40	.84
LE 20-15	20	15	3/8 x 3/8	1.45	.87
LE 30-15	30	15	3/8 x 3/4	1.50	.90
LE 5-25	5	25	1/4 x 3/8	1.40	.84
LE 6-25	6	25	1/4 x 3/8	1.40	.84
LE 10-25	10	25	3/8 x 3/8	1.45	.87
LE 15-25	15	25	3/8 x 3/8	1.45	.87
LE 20-25	20	25	3/8 x 3/8	1.50	.90
LE 5-50	5	50	1/4 x 3/8	1.45	.87
LE 10-50	10	50	3/8 x 3/8	1.50	.90
LE 20-50	20	50	3/8 x 3/8	1.50	.90

★When JAN-C-62 units must be supplied, order according to specific CE type designations.



"TOBEMITE" MOLDED PLASTIC TUBULARS



TOBE "TOBEMITES" are one of the toughest little capacitors ever offered servicemen for all types of television, auto radios, and other compact electronic equipment.

- ◆ Molded In Extra Hard Plastic
- ◆ Excellent Capacitance Stability
- ◆ Tested At Twice Rated Voltage
- ◆ Solidly Anchored Leads

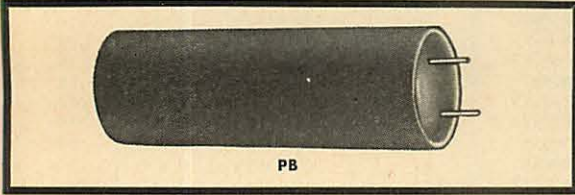
TEMPERATURE RANGE: -40°C to +85°C.

TOB Cat. No.	Cap. Mfd.	Size—Inches Dia. & Length	List Price	Net Price
200 V. D.C.				
TOB 252	.02	1/4 x 1 1/16	\$.25	\$.15
TOB 253	.05	3/8 x 1 1/16	.25	.15
TOB 2P1	.1	3/8 x 1 1/16	.35	.21
TOB 2P25	.25	3/8 x 1 1/8	.45	.27
TOB 2P5	.5	3/8 x 1 1/8	.60	.36
TOB 2W1	1.0	3/4 x 2 1/4	.90	.54
400 V. D.C.				
TOB 451	.01	1/4 x 1 1/16	.25	.15
TOB 452	.02	3/8 x 1 1/16	.25	.15
TOB 4522	.022	3/8 x 1 1/16	.25	.15
TOB 4547	.047	3/8 x 1 1/16	.30	.18
TOB 455	.05	3/8 x 1 1/16	.30	.18
TOB 4568	.068	1/2 x 1 1/2	.35	.21
TOB 4P1	.1	1/2 x 1 1/2	.35	.21
TOB 4P15	.15	3/8 x 1 1/8	.35	.21
TOB 4P22	.22	3/8 x 1 1/8	.40	.24
TOB 4P25	.25	3/8 x 1 1/8	.45	.27
TOB 4P47	.47	3/8 x 2 1/4	.60	.36
TOB 4P5	.5	3/4 x 2 1/4	.60	.36
TOB 4W1	1.0	1 x 2 1/2	.90	.54
600 V. D.C.				
TOB 6T25	.00025	3/16 x 1	.25	.15
TOB 6T5	.0005	1/4 x 3/4	.25	.15
TOB 6D1	.001	1/4 x 3/4	.25	.15
TOB 6D15	.0015	1/4 x 3/4	.25	.15
TOB 6D2	.002	1/4 x 3/4	.25	.15
TOB 6D22	.0022	1/4 x 3/4	.25	.15
TOB 6D3	.003	1/4 x 3/4	.25	.15
TOB 6D33	.0033	1/4 x 3/4	.25	.15
TOB 6D4	.004	1/4 x 1 1/16	.25	.15
TOB 6D47	.0047	1/4 x 1 1/16	.25	.15
TOB 6D5	.005	1/4 x 1 1/16	.25	.15

TOB Cat. No.	Cap. Mfd.	Size—Inches Dia. & Length	List Price	Net Price
600 V. D.C. (Continued)				
TOB 6D6	.006	1/4 x 1 1/16	.25	\$.15
TOB 6D68	.0068	1/4 x 1 1/16	.30	.18
TOB 651	.01	3/8 x 1 1/16	.30	.18
TOB 6515	.015	3/8 x 1 1/16	.30	.18
TOB 652	.02	3/8 x 1 1/16	.30	.18
TOB 6522	.022	3/8 x 1 1/16	.30	.18
TOB 6525	.025	3/8 x 1 1/16	.30	.18
TOB 653	.03	3/8 x 1 1/16	.35	.21
TOB 654	.04	1/2 x 1 1/2	.35	.21
TOB 6547	.047	1/2 x 1 1/2	.40	.24
TOB 655	.05	1/2 x 1 1/2	.40	.24
TOB 656	.06	3/8 x 1 1/8	.40	.24
TOB 6568	.068	3/8 x 1 1/8	.40	.24
TOB 6P1	.10	3/8 x 1 1/8	.45	.27
TOB 6P25	.25	3/4 x 2 1/4	.55	.33
TOB 6P5	.5	1 x 2 1/2	.80	.48
1000 V. D.C.				
TOB 10D1	.001	1/4 x 1 1/16	.50	.30
TOB 10D15	.0015	1/4 x 1 1/16	.50	.30
TOB 10D2	.002	3/8 x 1 1/16	.50	.30
TOB 10D22	.0022	3/8 x 1 1/16	.50	.30
TOB 10D3	.003	3/8 x 1 1/4	.50	.30
TOB 10D33	.0033	3/8 x 1 1/4	.50	.30
TOB 10D4	.004	3/8 x 1 1/4	.50	.30
TOB 10D47	.0047	3/8 x 1 1/4	.50	.30
TOB 10D5	.005	3/8 x 1 1/4	.50	.30
TOB 10D55	.0055	3/8 x 1 1/4	.50	.30
TOB 10D6	.006	3/8 x 1 1/4	.50	.30
TOB 10D68	.0068	3/8 x 1 1/4	.50	.30
TOB 10D7	.007	3/8 x 1 1/4	.50	.30
TOB 10D75	.0075	3/8 x 1 1/4	.50	.30
TOB 10D8	.008	3/8 x 1 1/4	.50	.30
TOB 1051	.01	3/8 x 1 1/4	.50	.30
TOB 10515	.015	3/8 x 1 1/4	.50	.30
TOB 1052	.02	1/2 x 1 1/2	.50	.30
TOB 10525	.025	1/2 x 1 1/2	.50	.30
TOB 1053	.03	1/2 x 1 1/2	.50	.30
TOB 1054	.04	3/8 x 1 1/8	.50	.30
1600 V. D.C.				
TOB 16D1	.001	3/8 x 1 1/4	.65	.39
TOB 16D15	.0015	3/8 x 1 1/4	.65	.39
TOB 16D2	.002	3/8 x 1 1/4	.65	.39
TOB 16D22	.0022	3/8 x 1 1/4	.65	.39
TOB 16D3	.003	3/8 x 1 1/4	.65	.39
TOB 16D33	.0033	3/8 x 1 1/4	.65	.39
TOB 16D4	.004	3/8 x 1 1/4	.65	.39
TOB 16D47	.0047	3/8 x 1 1/4	.65	.39
TOB 16D5	.005	3/8 x 1 1/4	.65	.39
TOB 16D55	.0055	3/8 x 1 1/4	.65	.39
TOB 16D6	.006	3/8 x 1 1/4	.65	.39
TOB 16D68	.0068	3/8 x 1 1/4	.65	.39
TOB 16D7	.007	3/8 x 1 1/4	.65	.39
TOB 16D75	.0075	3/8 x 1 1/4	.65	.39
TOB 16D8	.008	3/8 x 1 1/4	.65	.39
TOB 1651	.01	1/2 x 1 1/2	.70	.42
TOB 16515	.015	1/2 x 1 1/2	.70	.42
TOB 1652	.02	3/8 x 1 1/8	.70	.42
TOB 16525	.025	3/8 x 1 1/8	.70	.42
TOB 1653	.03	3/8 x 1 1/8	.70	.42
TOB 1654	.04	3/8 x 1 1/8	.70	.42
6000 V. D.C.				
TOB 60T5	.0005	3/16 x 1 1/2	1.35	.81
TOB 60D1	.001	3/16 x 1 1/2	1.35	.81
TOB 60D5	.005	1 1/16 x 1 1/8	1.35	.81
10,000 V. D.C.				
TOB 100T5	.0005	1 1/16 x 1 1/8	1.50	.90
12,500 V. D.C.				
TOB 125T25	.00025	1 1/16 x 1 1/8	1.70	1.02



PHENOLIC-CASED PRINTED CIRCUIT PAPER TUBULAR

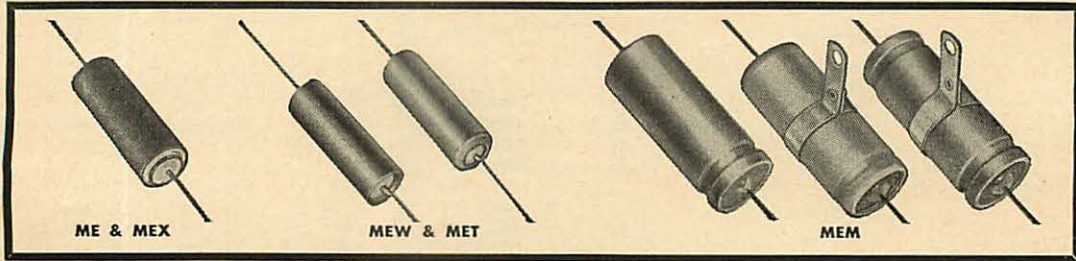


- ◆ **PARALLEL LEAD WIRES:** May be plugged directly into printed circuit.
- ◆ **PRE-MOLDED PHENOLIC SHELL:** No distortion and no stresses are set up because capacitor section is not subjected to molding pressures.
- ◆ **WIDE TEMPERATURE RANGE:** Vikane impregnated units (rated at 600 WVDC) will withstand operating temperature from -55°C to $+100^{\circ}\text{C}$. Units impregnated with HT compound (rated at 400 WVDC and 200 WVDC) will with-
- stand operating temperatures from -40°C to $+90^{\circ}\text{C}$.
- ◆ **POLYKANE FILL:** Securely anchors leads, locks section in place and provides a barrier to moisture.
- ◆ **SOLID CONNECTIONS:** Leads are soldered directly to the extended foils for low resistance connections.
- ◆ **STRONG CONSTRUCTION:** Will withstand the extremes of soldering temperatures without damage to case material, moisture seal, lead connections or electrical performance.

PB Cat. No.	Cap. Mfd.	Size	List Price	Net Price
200 V. D.C.				
PB 2D68J	.0068	$\frac{3}{8} \times 1$	\$.30	\$.18
PB 2S1J	.01	$\frac{3}{8} \times 1$.30	.18
PB 2S15J	.015	$\frac{3}{8} \times 1\frac{1}{4}$.30	.18
PB 2S22J	.022	$\frac{3}{8} \times 1\frac{1}{4}$.35	.21
PB 2S33J	.033	$\frac{3}{8} \times 1\frac{1}{4}$.35	.21
PB 2S47J	.047	$\frac{1}{2} \times 1\frac{1}{4}$.35	.21
PB 2S68J	.068	$\frac{1}{2} \times 1\frac{1}{4}$.35	.21
PB 2P1J	.10	$\frac{1}{2} \times 1\frac{1}{2}$.40	.24
PB 2P15J	.15	$\frac{1}{2} \times 1\frac{1}{2}$.45	.27
PB 2P22J	.22	$\frac{3}{8} \times 1\frac{1}{2}$.50	.30
PB 2P33J	.33	$\frac{5}{8} \times 1\frac{1}{2}$.55	.33
PB 2P47J	.47	$\frac{7}{8} \times 2\frac{1}{2}$.65	.39
PB 2P68J	.68	$\frac{7}{8} \times 2\frac{1}{2}$.70	.42
600 V. D.C.				
PB 6D1J	.001	$\frac{3}{8} \times 1$.30	.18
PB 6D15J	.0015	$\frac{3}{8} \times 1$.30	.18
PB 6D22J	.0022	$\frac{3}{8} \times 1$.30	.18
PB 6D33J	.0033	$\frac{3}{8} \times 1$.30	.18
PB 6D47J	.0047	$\frac{3}{8} \times 1$.30	.18
PB 6D68J	.0068	$\frac{3}{8} \times 1$.30	.18
PB 6S1J	.01	$\frac{3}{8} \times 1\frac{1}{4}$.35	.21
PB 6S15J	.015	$\frac{3}{8} \times 1\frac{1}{4}$.35	.21
PB 6S22J	.022	$\frac{3}{8} \times 1\frac{1}{4}$.40	.24
PB 6S33J	.033	$\frac{1}{2} \times 1\frac{1}{4}$.40	.24
PB 6S47J	.047	$\frac{1}{2} \times 1\frac{1}{2}$.45	.27
PB 6S68J	.068	$\frac{5}{8} \times 1\frac{1}{2}$.50	.30
PB 6P1J	.10	$\frac{3}{8} \times 1\frac{1}{2}$.55	.33
PB 6P15J	.15	$\frac{7}{8} \times 2\frac{1}{2}$.60	.36
PB 6P22J	.22	$\frac{7}{8} \times 2\frac{1}{2}$.65	.39
PB 6P33J	.33	$\frac{7}{8} \times 2\frac{1}{2}$.70	.42
*PB 4P47J	.47	$\frac{7}{8} \times 2\frac{1}{2}$.70	.42

*Rated at 400 V. D.C.

COMPACT METALIZED-PAPER CAPACITORS



TOBE self-healing, metalized paper capacitors have better electrical characteristics and extra long service life. Units are light and compact.

"ME" units have bare wire leads securely anchored in metal end-caps, wax-impregnated and dip-sealed against humidity. All units are extended foil—non-inductive wound for low impedance at high frequencies, have high insulation resistance, low power factor and small capacity change with temperature and life.

"MEM" types are one piece metal tubular cased, pressure sealed by spin-over on synthetic rubber gaskets.

"MEW" types are a high quality metalized paper capacitor, designed for smallest size and positive seal against moisture. They are hermetically sealed in metal cases with solder—seal glass terminals. Especially recommended in military and commercial equipment where miniature size and light weight are paramount.

METAL END-CAP "ME" CARDBOARD TUBULARS

TEMPERATURE RANGE: -40°C to $+60^{\circ}\text{C}$.

ME Cat. No.	Cap. Mfd.	Voltage DCW	Size—Inches Diam. x Length	List Price	Net Price
ME 255	.05	200	$\frac{3}{8} \times \frac{5}{8}$	\$.75	\$.45
ME 2P1	.1	200	$\frac{3}{8} \times \frac{5}{8}$.79	.47
ME 2P25	.25	200	$\frac{15}{32} \times \frac{3}{8}$	1.14	.68
ME 2P5	.5	200	$\frac{15}{32} \times 1\frac{1}{8}$	1.33	.80
ME 2W1	1.0	200	$\frac{9}{16} \times 1\frac{1}{8}$	1.78	1.07
ME 2W2	2.0	200	$\frac{3}{8} \times 1\frac{1}{8}$	2.42	1.45
ME 455	.05	400	$\frac{15}{32} \times \frac{5}{8}$.79	.47
ME 4P1	.1	400	$\frac{15}{32} \times 1\frac{1}{8}$.83	.50
ME 4P25	.25	400	$\frac{9}{16} \times 1\frac{1}{8}$	1.25	.75
ME 4P5	.5	400	$\frac{9}{16} \times 1\frac{1}{8}$	1.58	.94
ME 4W1	1.0	400	$\frac{23}{32} \times 2\frac{1}{8}$	2.20	1.32
ME 651	.01	600	$\frac{3}{8} \times \frac{5}{8}$.75	.45
ME 6P1	.1	600	$\frac{15}{32} \times 1\frac{1}{8}$.97	.58
ME 6P25	.25	600	$\frac{5}{8} \times 1\frac{1}{8}$	1.53	.92
ME 6P5	.5	600	$\frac{5}{8} \times 1\frac{1}{8}$	1.92	1.15
ME 6W1	1.0	600	$\frac{23}{32} \times 2\frac{1}{8}$	2.39	1.43

(Continued next page)



COMPACT METALIZED-PAPER CAPACITORS †

ONE-PIECE METAL "MEM" TUBULARS

(Ungrounded)

TEMPERATURE RANGE: -55°C. to +95°C.

MEM	Cat. No.	Cap. Mfd.	Voltage DCW	Size—Inches Diam. x Length	List Price	Net Price
MEM 2S5		.05	200	3/8 x 2 1/2	\$2.03	\$1.22
MEM 2P1		.1	200	7/16 x 2 1/2	2.11	1.27
MEM 2P25		.25	200	1/2 x 2 1/2	2.34	1.40
MEM 2P5		.05	200	1/2 x 1 1/2	2.56	1.54
MEM 2W1		1.0	200	.670 x 1 1/2	3.00	1.80
MEM 2W2		2.0	200	.670 x 1 1/2	3.73	2.24
MEM 4S5		.05	400	1/2 x 2 1/2	2.11	1.27
MEM 4P1		.1	400	1/2 x 1 1/2	2.25	1.35
MEM 4P25		.25	400	.670 x 1 1/2	2.61	1.57
MEM 4P5		.50	400	.670 x 1 1/2	2.92	1.75
MEM 4W1		1.0	400	3/4 x 2 1/2	3.70	2.22
MEM 4W2		2.0	400	1 x 2 1/2	5.31	3.19
MEM 6S1		.01	600	7/16 x 2 1/2	2.17	1.30
MEM 6P1		.1	600	1/2 x 1 1/2	2.34	1.40
MEM 6P25		.25	600	.670 x 1 1/2	2.89	1.73
MEM 6P5		.50	600	.670 x 1 1/2	3.25	1.95
MEM 6W1		1.0	600	3/4 x 2 1/2	4.25	2.55
MEM 6W2		2.0	600	1 1/8 x 2 1/2	6.10	3.66

*Deduct 10¢ from List Price for Basic GROUNDED style.

GLASS-METAL "MEW" END-SEALED TUBULARS

(Ungrounded)

TEMPERATURE RANGE: -55°C. to +95°C.

MEW	Cat. No.	Cap. Mfd.	Voltage DCW	Size—Inches Diam. x Length	List Price	Net Price
MEW 2S5		.05	200	.235 x 3/4	\$2.43	1.46
MEW 2P1		.1	200	.312 x 3/4	2.53	1.52
MEW 2P25		.25	200	.312 x 1 1/16	2.77	1.66
MEW 2P5		.5	200	.400 x 1 1/16	3.03	1.82
MEW 2W1		1.0	200	.562 x 1 1/4	3.27	1.96
MEW 2W15		1.5	200	.562 x 1 3/4	4.62	2.77
MEW 2W2		2.0	200	.562 x 1 3/4	4.62	2.77
MEW 4S5		.05	400	.400 x 3/4	2.45	1.47
MEW 4P1		.1	400	.400 x 1 1/16	2.65	1.59
MEW 4P25		.25	400	.562 x 1 1/16	3.08	1.85
MEW 4P5		.5	400	.562 x 1 3/4	3.68	2.21
MEW 4W1		1.0	400	.670 x 2 1/4	3.92	2.35
MEW 6S1		.01	600	.312 x 3/4	2.48	1.49
MEW 6P1		.1	600	.500 x 1 1/4	2.75	1.65
MEW 6P25		.25	600	.670 x 1 3/8	3.25	1.95
MEW 6P5		.5	600	.750 x 1 3/4	3.80	2.28
MEW 6W1		1.0	600	.750 x 2 1/4	4.22	2.53

*Deduct 50¢ from List Price for Basic GROUNDED style.

High Temperature Metalized-Paper Capacitors

- **RESIN-IMPREGNATED:** This impregnant insures excellent electrical properties over long service life.
- **MOISTURE RESISTANT:** MET tubulars have the finest glass-to-metal solder seal terminals for maximum protection against moisture. MEX tubulars have RESIN-impregnated paper tubes, bonded securely to the RESIN fill. An external flash wax dip provides an increased moisture seal for extra long storage and service conditions under extremes of humidity.
- **NON-LEAKING:** RESIN is a special solid thermosetting plastic that will not soften, crack, or leak at the maximum temperature. No oil or wax is used internally with these units.

"MEX" HIGH TEMPERATURE Paper-Cased TUBULARS

STANDARD TOLERANCE: +40 -20% to 1 mfd.
+30 -20% over 1 mfd.

TEMP. RANGE: -35°C to +100°C

MEX	Cat. No.	Cap. Mfd.	Voltage DCW	Size—Inches Dia. x Length	List Price	Net Price
MEX 2S5		.05	200	1/4 x 1 1/2	\$.75	\$.45
MEX 2P1		.10	200	5/16 x 1 1/2	.79	.47
MEX 2P25		.25	200	13/32 x 1 1/2	1.14	.68
MEX 2P5		.50	200	13/32 x 1 1/8	1.33	.80
MEX 2W1		1.0	200	3/8 x 1 1/2	1.78	1.07
MEX 2W2		2.0	200	3/8 x 1 1/2	2.42	1.45
MEX 4S5		.05	400	3/8 x 1 1/2	.79	.47
MEX 4P1		.10	400	3/8 x 1 1/8	.83	.50
MEX 4P25		.25	400	9/16 x 1 1/8	1.25	.75
MEX 4P5		.50	400	3/8 x 1 3/8	1.58	.94
MEX 4W1		1.0	400	1 1/16 x 1 1/8	2.20	1.32
MEX 4W2		2.0	400	3/8 x 2 3/8	3.10	1.86
MEX 6S1		.01	600	1/4 x 1 1/2	.75	.45
MEX 6P1		.10	600	1/4 x 1 1/8	.97	.58
MEX 6P25		.25	600	3/8 x 1 1/8	1.53	.92
MEX 6P5		.50	600	1 1/16 x 1 1/2	1.92	1.15
MEX 6W1		1.0	600	1 3/16 x 1 7/8	2.39	1.43
MEX 6W2		2.0	600	1 x 2 3/8	3.42	2.04

"MET" HIGH TEMPERATURE Metal-Cased TUBULARS

STYLE BASIC (Ungrounded)

STANDARD TOLERANCE: +40 -20% to 1 mfd.
+30 -20% over 1 mfd.

TEMP. RANGE -55°C to +130°C

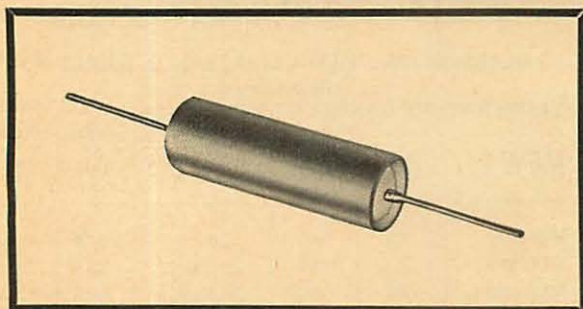
MET	Cat. No.	Cap. Mfd.	Voltage DCW	Size—Inches Diam. x Length	List Price	Net Price
MET 2S5		.05	200	.235 x 1 1/16	\$2.37	\$1.42
MET 2P1		.10	200	.312 x 1 1/16	2.47	1.48
MET 2P25		.25	200	.312 x 1 1/8	2.70	1.62
MET 2P5		.50	200	.400 x 1 1/8	2.97	1.78
MET 2W1		1.0	200	.562 x 1 1/8	3.20	1.92
MET 2W15		1.5	200	.562 x 1 13/16	4.55	2.73
MET 2W2		2.0	200	.562 x 1 13/16	4.55	2.73
MET 4S5		.05	400	.312 x 1 1/16	2.38	1.43
MET 4P1		.10	400	.400 x 1 1/8	2.58	1.55
MET 4P25		.25	400	.500 x 1 1/8	3.03	1.82
MET 4P5		.50	400	.562 x 1 13/16	3.63	2.18
MET 4W1		1.0	400	.670 x 2 3/16	3.87	2.32
MET 6S1		.01	600	.312 x 1 1/16	2.42	1.45
MET 6P1		.10	600	.400 x 1 1/8	2.70	1.62
MET 6P25		.25	600	.562 x 1 13/16	3.20	1.92
MET 6P5		.50	600	.670 x 1 13/16	3.72	2.23
MET 6W1		1.0	600	.750 x 2 3/16	4.17	2.50

*Deduct 50¢ from List Price Basic GROUNDED style.

†A wide range of values beyond those listed on this page is available upon request.



MINIATURE METAL-CASED TUBULARS



Hermetically sealed in metal cases, with glass-to-metal seal terminals and available in a wide variety of mounting styles, impregnants, tolerances, and internal construction.

STANDARD TOLERANCE: $\pm 20\%$
TEMPERATURE RANGE:

DMH Stabilized Halowax $-40^{\circ}\text{C. to } +85^{\circ}\text{C.}$
 DMC Mineral oil $-55^{\circ}\text{C. to } +85^{\circ}\text{C.}$
 DMU Silicone fluid $-55^{\circ}\text{C. to } +125^{\circ}\text{C.}$
 DMMA "Mylar" polyester film $-55^{\circ}\text{C. to } +160^{\circ}\text{C.}$

PRICES shown below are for BASIC STYLE—UNGROUND.

**Registered Dupont trade mark.

"BASIC" STYLE UNGROUNDED

DMH Cat. No.	Cap. Mfd.	V.D.C.W.	Size—Inches Dia. x Length	List Price	Net Price
DMH 1D1	.001	100	.175 x 3/4	\$2.25	\$1.35
DMH 1D47	.0047	100	.175 x 3/4	2.30	1.38
DMH 1S1	.01	100	.175 x 3/4	2.30	1.38
DMH 1S22	.022	100	.175 x 3/4	2.30	1.38
DMH 1S47	.047	100	.235 x 3/4	2.35	1.41
DMH 1P1	.1	100	.312 x 7/8	2.50	1.50
DMH 1P22	.22	100	.400 x 1 1/8	2.55	1.53
DMH 1P47	.47	100	.400 x 1 1/8	2.70	1.62
DMH 1W1	1.0	100	.562 x 1 3/8	3.20	1.92
DMH 2D1	.001	200	.235 x 3/4	2.35	1.41
DMH 2D47	.0047	200	.235 x 3/4	2.40	1.44
DMH 2S1	.01	200	.235 x 3/4	2.40	1.44
DMH 2S22	.022	200	.235 x 3/4	2.40	1.44
DMH 2S47	.047	200	.312 x 7/8	2.50	1.50
DMH 2P1	.1	200	.312 x 7/8	2.60	1.56
DMH 2P47	.47	200	.562 x 1 1/8	2.95	1.77
DMH 2W1	1.0	200	.562 x 1 3/8	3.30	1.98
DMH 4D1	.001	400	.235 x 3/4	2.40	1.44
DMH 4D47	.0047	400	.235 x 3/4	2.45	1.47
DMH 4S1	.01	400	.235 x 3/4	2.50	1.50
DMH 4S22	.022	400	.312 x 7/8	2.55	1.53
DMH 4S47	.047	400	.312 x 7/8	2.55	1.53
DMH 4P1	.1	400	.400 x 1 1/8	2.70	1.62
DMH 4P47	.47	400	.562 x 1 1/8	3.35	2.01
DMH 4W1	1.0	400	.750 x 2 1/8	3.90	2.34

DMC Cat. No.	Cap. Mfd.	V.D.C.W.	Size—Inches Dia. x Length	List Price	Net Price
DMC 1D1	.001	100	.175 x 3/4	\$2.30	\$1.38
DMC 1D47	.0047	100	.175 x 3/4	2.35	1.41
DMC 1S1	.01	100	.175 x 3/4	2.40	1.44
DMC 1S22	.022	100	.175 x 3/4	2.40	1.44
DMC 1S47	.047	100	.235 x 3/4	2.50	1.50
DMC 1P1	.1	100	.312 x 7/8	2.60	1.56
DMC 1P47	.47	100	.562 x 1 1/8	3.00	1.80
DMC 1W1	1.0	100	.562 x 1 3/8	3.40	2.04
DMC 2D1	.001	200	.235 x 3/4	2.40	1.44
DMC 2D47	.0047	200	.235 x 3/4	2.45	1.47
DMC 2S1	.01	200	.235 x 3/4	2.50	1.50
DMC 2S22	.022	200	.235 x 3/4	2.50	1.50
DMC 2S47	.047	200	.312 x 7/8	2.60	1.56
DMC 2P1	.1	200	.400 x 1 1/8	2.70	1.62
DMC 2P22	.22	200	.400 x 1 1/8	2.90	1.74
DMC 2P47	.47	200	.562 x 1 1/8	3.25	1.95

DMC (cont'd)

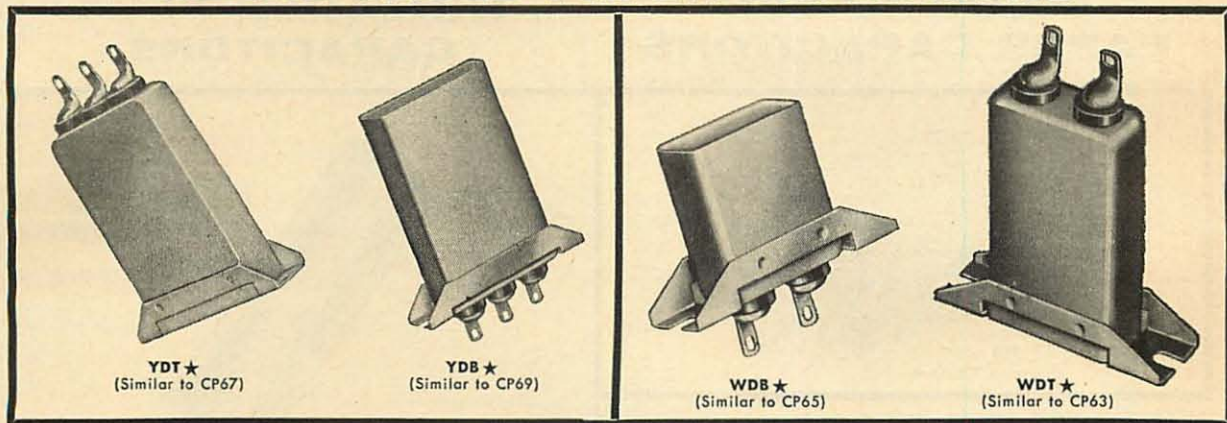
DMC Cat. No.	Cap. Mfd.	V.D.C.W.	Size—Inches Dia. x Length	List Price	Net Price
DMC 2W1	1.0	200	.670 x 1 7/8	\$3.80	\$2.28
DMC 4D1	.001	400	.235 x 3/4	2.50	1.50
DMC 4D47	.0047	400	.235 x 3/4	2.50	1.50
DMC 4S1	.01	400	.235 x 3/4	2.55	1.53
DMC 4S22	.022	400	.312 x 7/8	2.65	1.59
DMC 4S47	.047	400	.400 x 7/8	2.75	1.65
DMC 4P1	.1	400	.400 x 1 1/8	2.90	1.74
DMC 4P22	.22	400	.562 x 1 1/8	3.25	1.95
DMC 4P47	.47	400	.670 x 1 1/8	3.75	2.25
DMC 6D1	.001	600	.235 x 3/4	2.50	1.50
DMC 6D47	.0047	600	.235 x 3/4	2.55	1.53
DMC 6S1	.01	600	.312 x 7/8	2.65	1.59
DMC 6S22	.022	600	.312 x 7/8	2.70	1.62
DMC 6S47	.047	600	.400 x 1 1/8	2.80	1.68
DMC 6P1	.1	600	.562 x 1 1/8	3.10	1.86
DMC 6P22	.22	600	.562 x 1 1/8	3.45	2.07
DMC 6P47	.47	600	.750 x 2 1/8	4.05	2.43

DMU Cat. No.	Cap. Mfd.	V.D.C.W.	Size—Inches Dia. x Length	List Price	Net Price
DMU 1D1	.001	100	.175 x 3/4	\$2.60	\$1.56
DMU 1D47	.0047	100	.175 x 3/4	2.60	1.56
DMU 1S1	.01	100	.175 x 3/4	2.65	1.59
DMU 1S22	.022	100	.195 x 3/4	2.65	1.59
DMU 1S47	.047	100	.312 x 7/8	2.80	1.68
DMU 1P1	.1	100	.312 x 7/8	2.90	1.74
DMU 1P47	.47	100	.562 x 1 1/8	3.35	2.01
DMU 1W1	1.0	100	.562 x 1 3/8	3.80	2.28
DMU 2D1	.001	200	.235 x 3/4	2.70	1.62
DMU 2D47	.0047	200	.235 x 3/4	2.75	1.65
DMU 2S1	.01	200	.235 x 3/4	2.80	1.68
DMU 2S22	.022	200	.235 x 3/4	2.80	1.68
DMU 2S47	.047	200	.312 x 7/8	2.90	1.74
DMU 2P1	.1	200	.400 x 7/8	3.00	1.80
DMU 2P22	.22	200	.400 x 1 1/8	3.20	1.92
DMU 2P47	.47	200	.562 x 1 1/8	3.60	2.16
DMU 2W1	1.0	200	.670 x 1 7/8	4.25	2.55
DMU 4D1	.001	400	.235 x 3/4	2.80	1.68
DMU 4D47	.0047	400	.235 x 3/4	2.80	1.68
DMU 4S1	.01	400	.235 x 3/4	2.85	1.71
DMU 4S22	.022	400	.312 x 7/8	2.95	1.77
DMU 4S47	.047	400	.400 x 7/8	3.05	1.83
DMU 4P1	.1	400	.400 x 1 1/8	3.25	1.95
DMU 4P22	.22	400	.562 x 1 1/8	3.60	2.16
DMU 4P47	.47	400	.670 x 1 1/8	4.20	2.52
DMU 6D1	.001	600	.235 x 3/4	2.80	1.68
DMU 6D47	.0047	600	.235 x 3/4	2.85	1.71
DMU 6S1	.01	600	.312 x 7/8	2.95	1.77
DMU 6S22	.022	600	.312 x 7/8	3.00	1.80
DMU 6S47	.047	600	.400 x 1 1/8	3.15	1.89
DMU 6P1	.1	600	.562 x 1 1/8	3.50	2.10
DMU 6P22	.22	600	.562 x 1 1/8	3.90	2.34
DMU 6P47	.47	600	.750 x 2 1/8	4.55	2.73

DMMA Cat. No.	Cap. Mfd.	V.D.C.W.	Size—Inches Dia. x Length	List Price	Net Price
DMMA 1S1	.01	100	.235 x 7/8	\$3.10	\$1.86
DMMA 1S22	.022	100	.312 x 7/8	3.10	1.86
DMMA 1S47	.047	100	.312 x 7/8	3.25	1.95
DMMA 1P1	.1	100	.400 x 7/8	3.35	2.01
DMMA 4D47	.0047	400	.235 x 7/8	3.25	1.95
DMMA 4S1	.01	400	.312 x 7/8	3.30	1.98
DMMA 4S22	.022	400	.400 x 7/8	3.40	2.04
DMMA 4S47	.047	400	.400 x 1	3.55	2.13
DMMA 4P1	.1	400	.562 x 1	3.75	2.25
DMMA 4P22	.22	400	.562 x 1 1/8	4.20	2.52
DMMA 4P47	.47	400	.670 x 1 1/8	4.85	2.91
DMMA 4W1	1.0	400	.750 x 2 1/2	5.85	3.51
DMMA 6D47	.0047	600	.312 x 1	3.30	1.98
DMMA 6S1	.01	600	.312 x 1	3.40	2.04
DMMA 6S22	.022	600	.400 x 1	3.50	2.10
DMMA 6S47	.047	600	.400 x 1 1/8	3.65	2.19
DMMA 6P1	.1	600	.562 x 1 1/8	4.05	2.43
DMMA 6P22	.22	600	.670 x 1 1/8	4.50	2.70
DMMA 6P47	.47	600	.750 x 2 1/8	5.30	3.18
DMMA 6W1	1.0	600	1 x 2 1/2	7.00	4.20



METAL CASED PAPER CAPACITORS

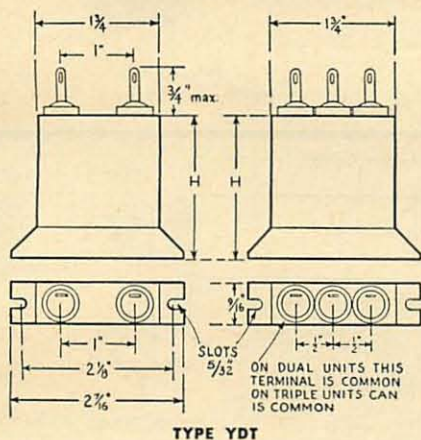


YDT ★
(Similar to CP67)

YDB ★
(Similar to CP69)

WDB ★
(Similar to CP65)

WDT ★
(Similar to CP63)

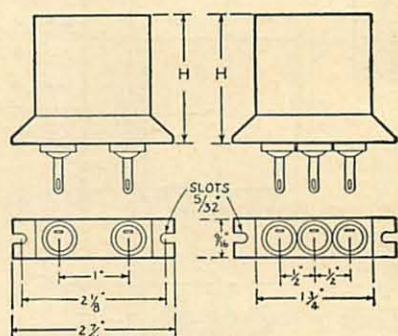


TYPE YDT

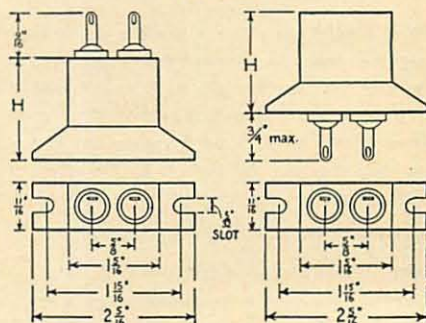
Types YDT and YDB are oil impregnated and oil filled with non-inflammable, non-oxidizable liquid. They are especially suited for use in bypass, audio frequency coupling circuits and other applications. Units are sealed in drawn metal shell containers and provided with leakproof terminals either on top or bottom of the can containers. They will meet MIL-C-25A performance and test requirements.

TEMPERATURE RANGE: -55°C to +85°C.
STANDARD TOLERANCE: +20%, -10%.

YDB/YDT	Cat. No.	Cap. Mfd.	Case Size—Inches L. x W. x H.	List Price	Net Price
600 V. D.C. Work.					
YDB or YDT 6005		.05	1 3/4 x 3/16 x 1 1/16	\$3.60	\$2.16
YDB or YDT 610		.1	1 3/4 x 3/16 x 1 1/16	3.60	2.16
YDB or YDT 625		.25	1 3/4 x 3/16 x 1 1/2	3.85	2.31
YDB or YDT 650		.5	1 3/4 x 3/16 x 2	4.15	2.49
YDB or YDT 601		1.0	1 3/4 x 3/16 x 2 1/2	4.70	2.82
YDB or YDT 6205		.05-.05	1 3/4 x 3/16 x 1 1/16	3.65	2.19
YDB or YDT 6210		.1-.1	1 3/4 x 3/16 x 1 1/2	4.70	2.82
YDB or YDT 6225		.25-.25	1 3/4 x 3/16 x 2	4.70	2.82
YDB or YDT 6250		.5-.5	1 3/4 x 3/16 x 2 1/2	5.50	3.30
YDB or YDT 6305		.05-.05-.05	1 3/4 x 3/16 x 1 1/16	5.25	3.15
YDB or YDT 6310		.1-.1-.1	1 3/4 x 3/16 x 1 1/2	5.50	3.30
YDB or YDT 6325		.25-.25-.25	1 3/4 x 3/16 x 2 1/2	5.80	3.48
1000 V. D.C. Work.					
YDB or YDT 10005		.05	1 3/4 x 3/16 x 1 1/16	3.70	2.22
YDB or YDT 1010		.1	1 3/4 x 3/16 x 1 1/16	4.00	2.40
YDB or YDT 1025		.25	1 3/4 x 3/16 x 2	4.15	2.49
YDB or YDT 1050		.5	1 3/4 x 3/16 x 2 1/2	4.40	2.64
YDB or YDT 10205		.05-.05	1 3/4 x 3/16 x 1 1/16	4.40	2.64
YDB or YDT 10210		.1-.1	1 3/4 x 3/16 x 1 1/2	4.95	2.97
YDB or YDT 10225		.25-.25	1 3/4 x 3/16 x 2	5.25	3.15
YDB or YDT 10305		.05-.05-.05	1 3/4 x 3/16 x 1 1/2	5.80	3.48
YDB or YDT 10310		.1-.1-.1	1 3/4 x 3/16 x 2 1/2	6.35	3.81



TYPE YDB



TYPE WDB

TYPE WDT

Types WDT and WDB Capacitors are smaller size units of similar construction and electrical characteristics but only supplied in single section units with two terminals. These units are ideally suited for use in assemblies where space is limited and multiple units may be mounted close together. They will meet MIL-C-25A performance and test requirements.

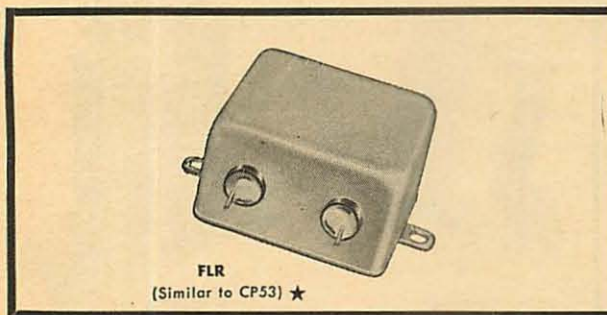
TEMPERATURE RANGE: -55°C to +85°C.
STANDARD TOLERANCE: +20%, -10%.

WDB/WDT	Cat. No.	Cap. Mfd.	Case Size—Inches L. x W. x H.	List Price	Net Price
600 V. D.C. Work.					
WDB or WDT 6005		.05	1 1/16 x 1 1/16 x 1 1/16	\$3.85	\$2.31
WDB or WDT 610		.1	1 1/16 x 1 1/16 x 1 1/16	4.15	2.49
WDB or WDT 625		.25	1 1/16 x 1 1/16 x 1 1/2	4.40	2.64
WDB or WDT 650		.5	1 1/16 x 1 1/16 x 2	4.70	2.82
WDB or WDT 601		1.0	1 1/16 x 1 1/16 x 2 1/2	5.25	3.15
1000 V. D.C. Work.					
WDB or WDT 10005		.05	1 1/16 x 1 1/16 x 1 1/16	4.15	2.49
WDB or WDT 1010		.1	1 1/16 x 1 1/16 x 1 1/16	4.15	2.49
WDB or WDT 1025		.25	1 1/16 x 1 1/16 x 2	4.40	2.64
WDB or WDT 1050		.5	1 1/16 x 1 1/16 x 2 1/2	4.40	2.64

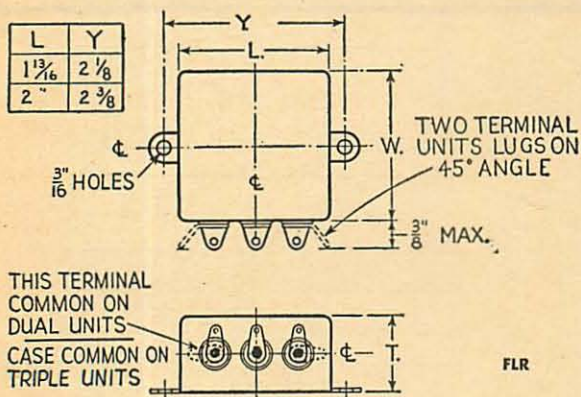
★When MIL-C-25A units must be supplied, order according to specific CP type designations listed in TOBE Paper Capacitor Catalog No. 5403.



METAL CASED PAPER CAPACITORS



FLR
(Similar to CP53) ★



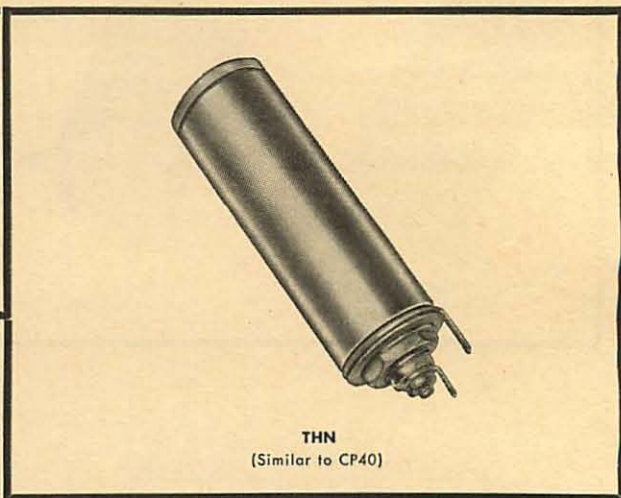
Type FLR oil-filled Bypass Capacitors are non-inductively wound and meet the need for dependable capacitors of fractional capacities that will operate efficiently in R.F. and A.F. bypass, audio frequency coupling under all humidity conditions. They are built to meet MIL-C-25A performance and test requirements and have been specially designed to fill the severe requirements of aircraft, submarine, marine and tropical applications.

TEMPERATURE RANGE: -55°C to +85°C.

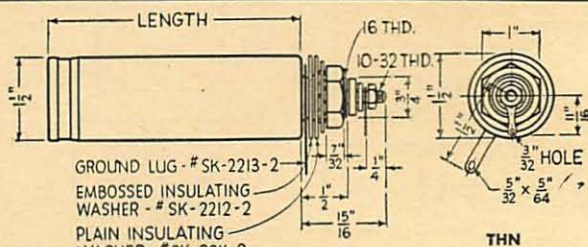
STANDARD TOLERANCE: +20%, -10%.

FLR	Cat. No.	Cap. Mfd.	Size—Inches Lgth. x Wid. x Thick.	List Price	Net Price
600 V. D.C. Work.					
FLR 6005		.05	1 13/16 x 1 x 3/4	\$2.90	\$1.74
FLR 610		.1	1 13/16 x 1 x 3/4	2.95	1.77
FLR 625		.25	1 13/16 x 1 x 3/4	3.10	1.86
FLR 650		.5	1 13/16 x 1 x 3/4	3.30	1.98
FLR 601		1.0	2 x 1 3/4 x 3/4	3.75	2.25
FLR 602		2.0	2 x 2 x 1 1/4	5.00	3.00
FLR 6205-3		.05-.05	1 13/16 x 1 x 3/4	3.65	2.19
FLR 6210-3		.1-.1	1 13/16 x 1 x 3/4	3.70	2.22
FLR 6225-3		.25-.25	1 13/16 x 1 x 3/4	3.75	2.25
FLR 6250-3		.5-.5	2 x 1 3/4 x 3/4	4.30	2.58
FLR 621-3		1.-1.	2 x 2 x 1 1/4	5.30	3.18
FLR 6310		.1-.1-.1	1 13/16 x 1 x 3/4	4.20	2.52
FLR 6325		.25-.25-.25	2 x 1 3/4 x 3/4	4.75	2.85
FLR 6350		.5-.5-.5	2 x 2 x 1 1/4	5.75	3.45
1000 V. D.C. Work.					
FLR 10005		.05	1 13/16 x 1 x 3/4	3.05	1.83
FLR 1010		.1	1 13/16 x 1 x 3/4	3.15	1.89
FLR 1025		.25	1 13/16 x 1 x 3/4	3.25	1.95
FLR 1050		.5	2 x 1 3/4 x 3/4	3.55	2.13
FLR 1001		1.0	2 x 2 x 1 1/4	4.40	2.64
FLR 10205-3		.05-.05	1 13/16 x 1 x 3/4	3.85	2.31
FLR 10210-3		.1-.1	1 13/16 x 1 x 3/4	4.00	2.40
FLR 10225-3		.25-.25	2 x 1 3/4 x 3/4	4.20	2.52
FLR 10250-3		.5-.5	2 x 2 x 1 1/4	5.45	3.27
FLR 10310		.1-.1-.1	2 x 1 3/4 x 3/4	4.60	2.76
FLR 10325		.25-.25-.25	2 x 2 x 1 1/4	5.50	3.30

THREADED NECK CAPACITORS



THN
(Similar to CP40)



TOBE type THN capacitors employ paper dielectric and are thoroughly oil impregnated and oil filled. Designed for through-chassis mounting. Case is grounded but may be isolated from chassis by means of insulating washer provided.

TEMPERATURE RANGE: -55°C to +85°C.

STANDARD TOLERANCE: +20%, -10%.

THN	Cat. No.	Cap. Mfd.	D.C. W. Volts	Size—Inches Lgth. x Diam.	List Price	Net Price
THN 6020		2	600	2 7/8 x 1 1/2	\$4.60	\$2.76
THN 6040		4	600	4 1/2 x 1 1/2	6.30	3.78
THN 10010		1	1000	2 7/8 x 1 1/2	4.20	2.52
THN 10020		2	1000	4 1/2 x 1 1/2	5.45	3.27
THN 15005		.5	1500	2 7/8 x 1 1/2	5.00	3.00
THN 15010		1	1500	4 1/2 x 1 1/2	5.45	3.27

TEMPERATURE RANGE: -55°C to +85°C.

STANDARD TOLERANCE: +20%, -10%.

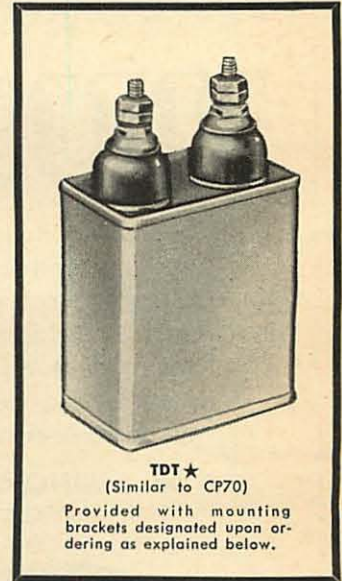
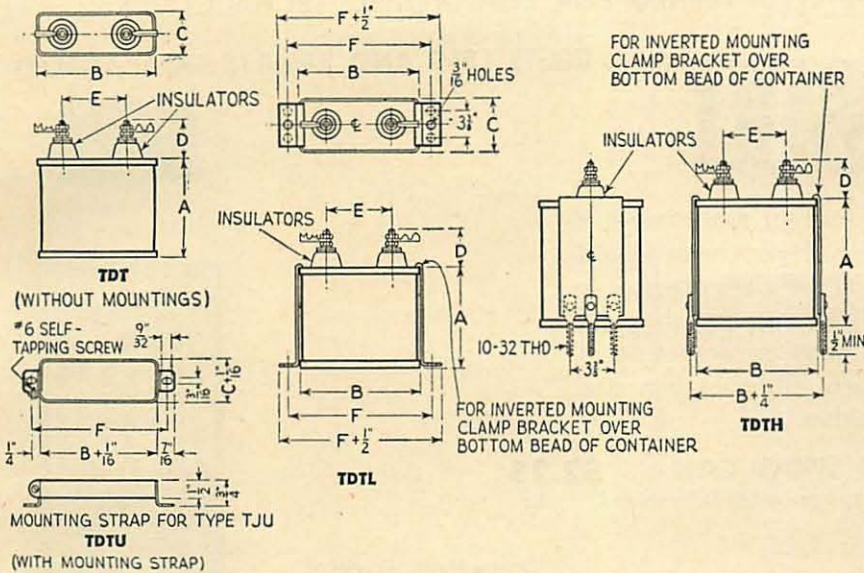
THND*	Cat. No.	Cap. Mfd.	D.C. W. Volts	Size—Inches Lgth. x Diam.	List Price	Net Price
THND 6020		2	600	2 7/8 x 1 1/2	\$5.40	\$3.24
THND 6040		4	600	4 1/2 x 1 1/2	7.10	4.26
THND 10010		1	1000	2 7/8 x 1 1/2	5.00	3.00
THND 10020		2	1000	4 1/2 x 1 1/2	6.30	3.78
THND 15005		.5	1500	2 7/8 x 1 1/2	5.85	3.51
THND 15010		1	1500	4 1/2 x 1 1/2	6.30	3.78

*Type THND—Two solder lug terminals insulated from case. This type similar to CP41.

★When MIL-C-25A units must be supplied, order according to specific CP type designations listed in TOBE Paper Capacitor Catalog No. 5402.



TRANSMITTING & INDUSTRIAL CAPACITORS



TYPE DESIGNATIONS—Type TDT (basic units) are without mountings. To order Types TDTH, TDTL or TDTU with mountings as shown above, use letter symbols of type mountings desired for Cat. No. as follows:

TYPE TDT—(Basic unit) without mountings.
TYPE TDTH—With screw spade-lug brackets.

TYPE TDTL—With mounting foot brackets.
TYPE TDTU—With universal mounting strap.

Prices below include mounting brackets or universal mounting strap when ordered according to these type numbers.

TEMPERATURE RANGE: -55°C to +85°C. **STANDARD TOLERANCE:** ±10%.

TDT Cat. No.	Cap. Mfd.	Dimensions—Inches						List Price	Net Price
		A	B	C	D	E	F		
600 V. D.C. Working									
TDT 650	.5	2 1/4	1 13/16	1 1/16	7/8	1 15/16	2 1/4	\$4.70	\$2.82
TDT 601	1	2 1/4	1 13/16	1 1/16	7/8	1 15/16	2 1/4	5.80	3.48
TDT 602	2	2 1/4	1 13/16	1 1/16	7/8	1 15/16	2 1/4	7.15	4.29
TDT 604	4	3 1/2	2 1/2	1 3/16	1	1 1/8	3	9.10	5.46
TDT 606	6	4 3/4	2 1/2	1 3/16	1	1 1/8	3	11.30	6.78
TDT 608	8	3 3/4	3 3/4	1 1/4	1	2	4 3/8	13.50	8.10
TDT 6010	10	4 3/4	3 3/4	1 1/4	1	2	4 3/8	15.15	9.09
1000 V. D.C. Working									
TDT 1010	.1	1 3/8	1 13/16	1 1/16	7/8	1 15/16	2 1/4	4.15	2.49
TDT 1025	.25	2 1/4	1 13/16	1 1/16	7/8	1 15/16	2 1/4	4.70	2.82
TDT 1050	.5	2 1/4	1 13/16	1 1/16	7/8	1 15/16	2 1/4	4.95	2.97
TDT 1001	1	2 1/4	1 13/16	1 1/16	7/8	1 15/16	2 1/4	6.35	3.81
TDT 1002	2	3 3/8	1 13/16	1 1/16	7/8	1 15/16	2 1/4	8.25	4.95
TDT 1004	4	4 3/4	2 1/2	1 3/16	1	1 1/8	3	10.45	6.27
TDT 1006	6	4 3/4	3 3/4	1 1/4	1	2	4 3/8	14.05	8.43
TDT 1008	8	3 3/4	3 3/4	1 1/4	1	2	4 3/8	15.15	9.09
TDT 10010	10	4 3/4	3 3/4	1 1/4	1	2	4 3/8	16.80	10.08
TDT 10012	12	4 1/2	3 3/4	2 1/4	1	2	4 3/8	18.15	10.89
TDT 10015	15	4 3/4	3 3/4	2 1/4	1	2	4 3/8	20.10	12.06
1500 V. D.C. Working									
TDT 1550	.5	2 3/8	1 13/16	1 1/16	7/8	1 15/16	2 1/4	6.35	3.81
TDT 1501	1	3 3/8	1 13/16	1 1/16	7/8	1 15/16	2 1/4	7.45	4.47
TDT 1502	2	4 1/4	2 1/2	1 3/16	1	1 1/8	3	10.20	6.12
TDT 1504	4	4 3/4	3 3/4	1 1/4	1	2	4 3/8	14.05	8.43
TDT 1506	6	4 3/4	3 3/4	1 1/4	1	2	4 3/8	17.05	10.23
TDT 1508	8	4 3/4	3 3/4	2 1/2	7/8	2	4 3/8	20.90	12.54
*TDT 15010	10	4 3/4	3 3/4	3 3/16	7/8	2	4 3/8	25.05	15.03
*TDT 15012	12	4 3/4	3 3/4	3 3/16	7/8	2	4 3/8	27.25	16.35
†TDT 15015	15	4 3/4	4 3/16	3 3/4	7/8	2	4 3/8	30.00	18.00

TDT Cat. No.	Cap. Mfd.	Dimensions—Inches						List Price	Net Price
		A	B	C	D	E	F		
2000 V. D.C. Working									
TDT 2010	.1	2 1/2	2 1/2	1 3/16	7/8	1 1/8	3	\$6.60	\$3.96
TDT 2025	.25	2 1/2	2 1/2	1 3/16	7/8	1 1/8	3	7.15	4.29
TDT 2050	.5	2 1/2	2 1/2	1 3/16	7/8	1 1/8	3	7.45	4.47
TDT 2001	1	3 1/2	2 1/2	1 3/16	1	1 1/8	3	9.10	5.46
TDT 2002	2	4 1/4	3 3/4	1 1/4	1	2	4 3/8	10.75	6.43
TDT 2004	4	3 3/8	3 3/4	2 1/4	1	2	4 3/8	15.15	9.09
*TDT 2006	6	4 1/2	3 3/4	3 3/16	1 1/4	2	4 3/8	20.10	12.06
*TDT 2008	8	5 1/8	3 3/4	3 3/16	1 1/4	2	4 3/8	25.05	15.03
*TDT 20010	10	4 3/4	4 3/16	3 3/4	1 1/4	2	4 3/8	30.55	18.33
†TDT 20012	12	5 1/2	4 3/16	3 3/4	1 1/4	2	4 3/8	33.30	19.98
2500 V. D.C. Working									
TDT 2550	.5	3 1/2	2 1/2	1 3/16	1 1/4	1 1/8	3	11.55	6.93
TDT 2501	1	3 3/4	3 3/4	1 3/4	7/8	2	4 3/8	13.20	7.92
TDT 2502	2	4 3/4	3 3/4	1 3/4	7/8	2	4 3/8	21.45	12.87
†TDT 2504	4	4 7/8	4 3/16	3 3/4	7/8	2	4 3/8	30.00	18.00
†TDT 25010	10	7	4 3/16	3 3/4	1 1/4	2	4 3/8	75.10	45.06
3000 V. D.C. Working									
TDT 3010	.1	2 1/2	2 1/2	1 3/16	1 3/16	1 1/8	3	14.05	8.43
TDT 3025	.25	2 1/2	2 1/2	1 3/16	1 3/16	1 1/8	3	14.85	8.91
TDT 3050	.5	4 1/4	2 1/2	1 3/16	1 3/16	1 1/8	3	16.80	10.08
TDT 3001	1	3 3/8	3 3/4	2 1/4	1 3/16	2	4 3/8	20.10	12.06
*TDT 3002	2	4 1/2	3 3/4	3 3/16	1 3/16	2	4 3/8	25.05	15.03
†TDT 3004	4	4 3/4	4 3/16	3 3/4	1 3/16	2	4 3/8	36.85	22.11
4000 V. D.C. Working									
TDT 4010	.1	2 3/4	3 3/4	2 1/4	1 3/16	2	4 3/8	18.00	10.80
TDT 4025	.25	2 3/4	3 3/4	2 1/4	2	2	4 3/8	20.00	12.00
TDT 4050	.5	3 3/8	3 3/4	2 1/4	2	2	4 3/8	23.00	13.80
TDT 4001	1	5 1/8	3 3/4	2 1/4	1 3/16	2	4 3/8	29.00	17.40
†TDT 4002	2	5 1/8	4 3/16	3 3/4	2	2	4 3/8	39.00	23.40
†TDT 4004	4	8 1/2	4 3/16	3 3/4	2	2	4 3/8	66.85	40.11
5000 V. D.C. Working									
TDT 5050	.5	4 1/2	3 3/4	2 1/4	2	2	4 3/8	25.00	15.00
*TDT 5001	1	4 3/8	4 3/16	3 3/4	1 3/16	2	4 3/8	34.00	20.40
*TDT 5002	2	6	4 3/16	3 3/4	1 3/16	2	4 3/8	52.00	31.20
6000 V. D.C. Working									
TDT 6010	.1	2 3/4	3 3/4	2 1/4	2	1 3/4	4 3/8	27.00	16.20
†TDT 6001	1	4 3/4	3 3/4	4 3/16	2	2	4 3/8	49.00	29.40

NOTES—*Type TDTU units are not furnished in these sizes.
†Types TDTL and TDTH units are furnished with two mounting holes or spade lugs 3 3/8" apart. All other units furnished with a single mounting hole or spade lug centered on each bracket.

For higher voltage units, to 25,000 v.d.c., write for data and prices.

★When MIL-C-25A units must be supplied, order according to specific CP type designations listed in TOBE Paper Capacitor Catalog No. 5403.