

MICROTRAN company, inc., VALLEY STREAM, N. Y.

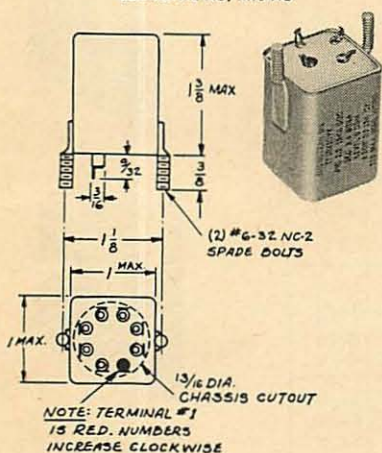
HERMETICALLY SEALED MINIATURE TRANSFORMERS

The ruggedized military type units shown on this and the accompanying page were developed to meet the demands of a growing miniaturization program. The various types shown are available from stock for immediate delivery. For use in miniaturized vacuum tube and Transistor circuitry.

MIL CASE M-AG

Grey Enamel Finish. Weight 2 3/8 oz. Supplied with compression sealed ceramic terminals in MIL-T-27 AG case.

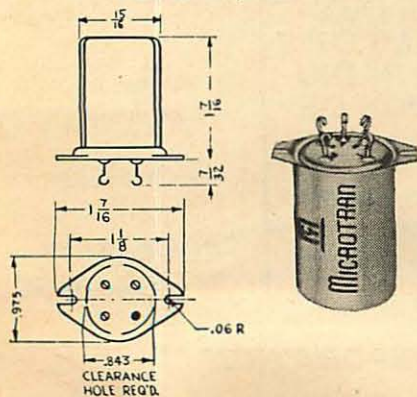
To order add -AG to Part Number. i.e. M2-AG, M3-AG



HERMETIC M-H

Grey Enamel Finish. Weight 1 1/4 oz. High Compression Glass Terminals. .120 holes instead of slots, available on special order.

To order add -H to Part Number. i.e. M2-H, M3-H



MINIATURE AUDIO TRANSFORMERS ("M" SERIES)

Part No.*	Application	Primary Impedance	Secondary Impedance	Pri. D.C. Unbalance Ma.	Operating Level DBM	Frequency Response ± 2 db.
M1-(*)	Mike or line to 1 grid	50/250/600 C.T.	50,000	0	5	20-20,000
M2-(*)	Mike or line to 2 grids	50/250/600 C.T.	50,000 C.T.	0	5	20-20,000
M3-(*)	Dynamic mike to 1 grid	7.5/30	50,000	0	5	20-20,000
M4-(*)	Single plate to 1 grid	15,000	60,000	0	6	20-15,000
M5-(*)	Single plate to 1 grid	15,000	60,000	4	14	200-20,000
M6-(*)	Single plate to 2 grids	15,000	95,000 C.T.	0	5	20-15,000
M7-(*)	Single plate to 2 grids	15,000	95,000 C.T.	4	11	200-20,000
M8-(*)	Single plate to line	15,000	50/250/600 C.T.	0	8	20-20,000
M9-(*)	Single plate to line	15,000	50/250/600 C.T.	4	21	150-20,000
M10-(*)	Push pull plates to line	30,000 P.-P.	50/250/600 C.T.	0	8	30-50,000
M11-(*)	Crystal mike to line	50,000	50/250/600 C.T.	0	5	20-20,000
M12-(*)	Mixing and matching	50/250 C.T.	50/250/600 C.T.	0	8	20-20,000
M13-(*)	Reactor	300 hy. 0 d.c.	50 hy. @ 3 ma.			6000 Ω D.C.R.
M14-(*)	50: 1 mike to grid	200	1/2 Megohm	0	9	80-3,000
M15-(*)	10: 1 plate to grid	10,000	1 Megohm	0	11	100-2,500

MINIATURE TRANSISTOR TRANSFORMERS ("MT" SERIES)

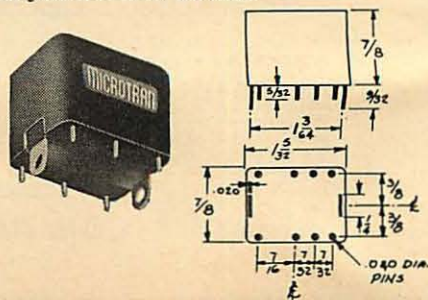
Part No.*	Application	Primary Impedance	Secondary Impedance	Pri. D.C. Unbalance Ma.	Operating Level DBM	Frequency Response ± 2 db.
MT1-(*)	Line to Base	600	600	10	23	200-15,000
MT2-(*)	Coll. to P.P. Base 2N57	100	10 C.T./40 C.T.	100	27	200-20,000
MT3-(*)	Collector to Base or line	50,000	600	3	20	300-15,000
MT5-(*)	Collector to speaker	50,000	6	3	20	300-15,000
MT6-(*)	Collector to P.P. Base	100,000	1200 C.T.	1.4	17	200-15,000
MT7-(*)	Collector to P.P. Base	25,000	1200 C.T.	3	22	200-15,000
MT8-(*)	P.P. Collector to P.P. Base	50,000 C.T.	1200 C.T.	3	20	300-15,000
MT9-(*)	Line to P.P. Base	600 C.T.	1200 C.T.	4	23	200-15,000
MT10-(*)	Collector to Base	25,000	600	3	22	200-15,000
MT11-(*)	P.P. Coll. to P.P. Base	4,000 C.T.	600 C.T.	3	32	200-15,000
MT12-(*)	Output collector to speaker	2,000	3.4	10	32	200-15,000
MT13-(*)	P.P. Coll. to speaker	4,000 C.T.	3.4	3	32	200-15,000
MT14-(*)	Coll. to Spkr. 2N179	400	10	50	25	200-20,000
MT15-(*)	P.P. Servo Output 2N57	500 C.T.	210	30	27	300-20,000
MT18-(*)	P.P. Coll. to P.P. Base	25,000 C.T.	1,200 C.T.	6	22	200-15,000
MT20-(*)	P.P. Coll. to P.P. Base	50,000 C.T.	1200/300 Split	3	20	300-15,000
MT21-(*)	P.P. Coll. to P.P. Base	4,000 C.T.	600/150 Split	3	32	200-15,000
MT22-(*)	Line to P.P. Base	600/150 Split	1,200 C.T.	4	23	200-15,000
MT23-(*)	P.P. coll. to Servo	250 C.T.	1000	10	30	300-15,000

*Add either -AG, or -H, or -M to part No. to designate construction. See Photos

MOLDED M-M

Designed for plug-in printed circuit applications. Cast Epoxy resin provides highest resistance to extremes of ambient. Weight 1 3/4 oz.

To order add -M to Part Number. i.e. M2-M, M3-M



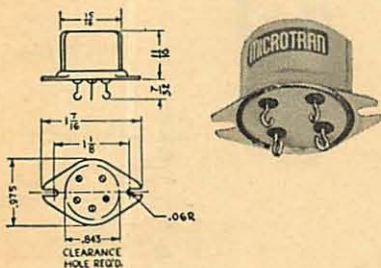
MICROTRAN company, inc., VALLEY STREAM, N. Y.

HERMETICALLY SEALED MICRO-MINIATURE TRANSFORMERS

The units shown on this page are suitable for rigid sub-miniaturization applications where the highest resistance to extremes of ambients must still be maintained. Available from stock for immediate delivery.

HERMETIC MM-H

Grey Enamel Finish.
High Compression Glass
Terminals. Weight 3/4 oz.
To order add -H to Part Num-
ber. i.e. MM2-H, MMT3-H



MICRO-MINIATURE AUDIO TRANSFORMERS ("MM" SERIES)

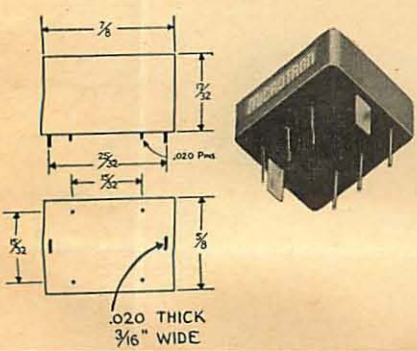
Part No.	Application	Primary Impedance	Secondary Impedance	Pri. DC. Unbalance Ma.	Operating Level DBM	Freq. Response ± 2 db.
MM1-(-)	Input	200 50	250,000 62,500	0	4	200-10,000
MM2-(-)	Interstage 3:1	10,000	90,000	0	4	150-10,000
MM3-(-)	Plate to line	10,000	200	3	20	150-10,000
MM4-(-)	Output	30,000	50	1	20	150-10,000
MM5-(-)	Reactor 50 HY at 1 MIL D.C.	4,700 ohms				
MM6-(-)	Output	100,000	60	0.5	20	250-10,000
MM7-(-)	Output	30,000	1200	0.5	20	200-10,000

MICRO-MINIATURE TRANSISTOR SERIES ("MMT" SERIES)

Part No.	Application	Primary Impedance	Secondary Impedance	Pri. DC. Unbalance Ma.	Operating Level DBM	Freq. Response ± 2 db.
MMT1-(-)	Line to Base	600	600	8	22	200-15,000
MMT3-(-)	Collector to Base or line	50,000	600	0.7	20	200-15,000
MMT4-(-)	P.P. collector to P.P. Base	50,000 C.T.	600 C.T.	1.4	20	200-15,000
MMT5-(-)	Collector to speaker	50,000	6	1	20	200-15,000
MMT7-(-)	Coll. to P.P. Base	25,000	1200 C.T.	1	20	200-15,000
MMT8-(-)	P.P. collector to P.P. Base	50,000 C.T.	1200 C.T.	1.4	20	200-15,000
MMT9-(-)	Line to P.P. Base	600 C.T.	1200 C.T.	16	22	200-15,000
MMT10-(-)	Collector to Base	25,000	600	1	20	200-15,000
MMT11-(-)	P.P. col. to P.P. Base or line	4,000 C.T.	600 C.T.	5	28	200-15,000
MMT12-(-)	Coll. to Spkr.	2,000	3.4	5	28	200-15,000
MMT13-(-)	Output P.P. collector to spkr.	4,000 C.T.	3.4	5	28	200-15,000
MMT16-(-)	Collector to P.P. Base	10,000	1,500 C.T.	1	20	200-15,000
MMT17-(-)	P.P. Coll. to P.P. Base	10,000 C.T.	200 C.T.	6	20	200-15,000
MMT18-(-)	P.P. Coll. to P.P. Base	25,000 C.T.	1,200 C.T.	2	20	200-15,000
MMT19-(-)	Collector to P.P. Base	2,500	2,500 C.T.	2	23	200-15,000

MOLDED MM-M

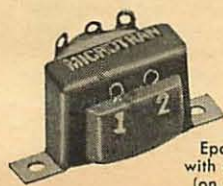
Micro-Miniature Size
Designed for plug-in printed circuit applications. Cast Epoxy resin provides highest resistance to extremes of ambient. Weight 1/2 oz.
To order add -M to Part Number. i.e. MM2-M, MMT2-M.



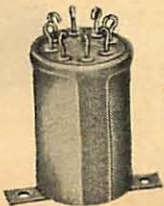
*Add either -F, or -FB, or -FPB to Part No. to designate construction. See Photos.

SPECIAL STOCK UNITS

On special order, Catalog items on pages 1365 through 1374 are available with modified electrical characteristics such as extra taps, impedance changes, or High Temperature construction. Shown below are the typical special mechanical constructions that are available on special order.



Epoxy Encapsulation with solder lug terminals (on special order only)



Hermetic Construction with terminals opposite from mounting surface (on special order only)

MICROTRAN company, inc., VALLEY STREAM, N. Y.

Designed specifically for Transistor, Servo and Audio applications. All units shown are of MIL-T-27A construction and are available from stock. On special order may be obtained in alternate constructions such as Epoxy molded, or open frame. Also available with modified electrical specifications.

**HERMETICALLY SEALED
TRANSISTOR DRIVER
OUTPUT AND POWER SUPPLY
TRANSFORMERS**

TRANSISTOR DRIVER TRANSFORMERS

Part Number	Application	Pri. Imp.	Sec. Imp.	Pri. D.C. Unbal. Ma.	Level Watts	Frequency Response ± 2 Db.	Size			Mounting Centers		Mil Case
							D	W	H	Md	Mw	
M8002*	Collector to P.P. Base	560	400 C.T.	18	.15	200-20,000	1 5/8	1 5/8	2 3/8	1 3/16	1 3/16	AJ
M8003*	Collector to P.P. Base	625 C.T.	100 C.T.	20	1.5	200-20,000	1 5/8	1 5/8	2 3/8	1 3/16	1 3/16	AJ
M8004	Collector to P.P. Base	5,400	600 C.T.	15	.075	200-15,000	1 5/8	1 5/8	1 3/4	1 1/4	Diag.	AH
M8005	Collector to P.P. Base	7,000	320 C.T.	7	.040	70-15,000	1 5/8	1 5/8	1 3/4	1 1/4	Diag.	AH
M8006	Collector to P.P. Base	10,000	6,500 C.T.	.75	.005	200-15,000	3/4	3/4	1 1/8	1 3/16	Diag.	AF Mod.

*Bi-Filar wound to minimize switching transients.

TRANSISTOR OUTPUT TRANSFORMERS

Part Number	Application	Pri. Imp.	Sec. Imp.	Pri. D.C. Unbal. Ma.	Level Watts	Frequency Response ± 2 Db.	Size			Mounting Centers		Mil Case
							D	W	H	Md	Mw	
M8008	P.P. Output to Spkr.	25	3-4	600	3	200-20,000	1 5/8	1 5/8	2 3/8	1 3/16	1 3/16	AJ
M8007*	P.P. Auto Transformer	30 C.T.	3-4	200	2	100-20,000	1 5/8	1 5/8	2 3/8	1 3/16	1 3/16	AJ
M8009	P.P. Output to Spkr.	48 C.T.	3.2/8	50	5	200-20,000	1 5/8	1 5/8	2 3/8	1 3/16	1 3/16	AJ
M8010	P.P. Col. to Servo	120 C.T.	1,000	40	6	300-15,000	1 5/8	1 5/8	2 3/8	1 3/16	1 3/16	AJ
M8011	P.P. Output to Spkr.	125 C.T.	3-4	20	1.5	200-15,000	1 5/8	1 5/8	1 3/4	1 1/4	Diag.	AH
M8012*	P.P. Col. to Servo	140 C.T.	500	50	6	300-15,000	1 5/8	1 5/8	2 3/8	1 3/16	1 3/16	AJ
M8013*	P.P. Output to Spkr.	250 C.T.	3-4	20	.4	70-15,000	1 5/8	1 5/8	1 3/4	1 1/4	Diag.	AH
M8014	P.P. Output to Spkr.	400 C.T.	11	2	.25	300-15,000	3/4	3/4	1 1/8	1 3/16		AF Mod.
M8015	P.P. Col. to Servo	1,600 C.T.	800	5	2.5	150-20,000	1 5/8	1 5/8	2 3/8	1 3/16	1 3/16	AJ
M8016	P.P. Output to Spkr.	2,550 C.T.	12	4	.10	300-15,000	3/4	3/4	1 1/8	1 3/16		AF Mod.

*Bi-Filar wound to minimize switching transients.

POWER SUPPLY TRANSFORMERS

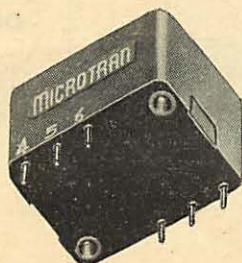
Designed for Silicon Rectifier Circuitry Primary 105/115/125 Volts

Part Number	Frequency Cycles	AC Volts	Secondary RMS Amperes	Rectifier Circuit		D	Size		Mounting Centers		Mil Case
				C.T. Full Wave D.C. Volts**	F.W. Bridge D.C. Volts**		W	H	Md	Mw	
M8018	380-1600	18.5 C.T.	1	7	14	1 13/16	1 13/16	2 3/8	1 3/8	1 1/4	EA
M8019	380-1600	18.5 C.T.	3	7	14	2 5/16	2 1/16	3 1/8	1 11/16	1 7/8	FA
M8020	380-1600	35 C.T.	3	14.5	29	2 3/4	2 3/8	3 13/16	2 1/8	1 3/4	GA
M8021	380-1600	70 C.T.	1	30	60	2 5/16	2 1/16	3 1/8	1 11/16	1 7/8	FA
M8022	50/60	18.5 C.T.	3	7	14	3 1/16	3 1/16	3 7/8	2 5/8	2 1/8	JB
M8023	50/60	35 C.T.	3	14.5	29	3 15/16	3 3/8	5 1/4	3	2 1/8	KA
M8024	50/60	70 C.T.	1	30	60	3 5/16	3 1/16	4 7/8	2 5/8	2 1/8	JA

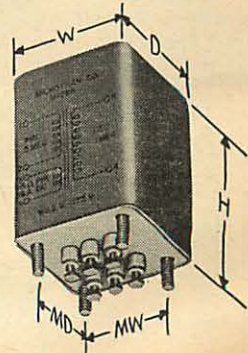
**D.C. Output voltages stated for resistive or inductive rectifier loads.

EPOXY MOLDED
(On Special Order Only)

Inserts or studs or tabs for mounting, leads terminated with .040 pins for printed circuit applications.



**HERMETICALLY SEALED
PER MIL-T-27A**





MICROTRAN company, inc., VALLEY STREAM, N. Y.

INDUSTRIAL GRADE MINIATURE CASED and OPEN FRAME TRANSFORMERS

These miniature units are suitable for use in high fidelity amplifiers, broadcast equipment, and portable applications. Thorough baking and resin impregnation assure reliable life. Open frame units supplied with 4 inch #27 color coded vinyl leads. Available from stock for immediate delivery.

MINIATURE AUDIO TRANSFORMERS ("M" SERIES)

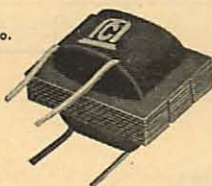
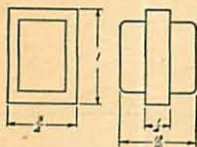
Part No.	Application	Primary Impedance	Secondary Impedance	Pri. D.C. Unbalance Ma.	Operating Level DBM	Freq. Response ±2 db.
M1-(*)	Mike or line to 1 grid	50/250/600 C.T.	50,000	0	5	20-20,000
M2-(*)	Mike or line to 2 grids	50/250/600 C.T.	50,000 C.T.	0	5	20-20,000
M3-(*)	Dynamic mike to 1 grid	7.5/30	50,000	0	5	20-20,000
M4-(*)	Single plate to 1 grid	15,000	60,000	0	6	20-15,000
M5-(*)	Single plate to 1 grid	15,000	60,000	4	14	200-20,000
M6-(*)	Single plate to 2 grids	15,000	95,000 C.T.	0	5	20-15,000
M7-(*)	Single plate to 2 grids	15,000	95,000 C.T.	4	11	200-20,000
M8-(*)	Single plate to line	15,000	50/250/600 C.T.	0	8	20-20,000
M9-(*)	Single plate to line	15,000	50/250/600 C.T.	4	21	150-20,000
M10-(*)	Push pull plates to line	30,000 P.-P.	50/250/600 C.T.	0	8	30-50,000
M11-(*)	Crystal mike to line	50,000	50/250/600 C.T.	0	5	20-20,000
M12-(*)	Mixing and matching	50/250 C.T.	50/250/600 C.T.	0	8	20-20,000
M13-(*)	Reactor	300 hy. 0 d.c.	50 hy. @ 3 ma.			6000 Ω D.C.R.
M14-(*)	50:1 mike to grid	200	1/2 Megohm	0	9	80-3,000
M15-(*)	10:1 plate to grid	10,000	1 Megohm	0	11	100-2,500

OPEN FRAME

M-F

Weight 1 oz.

To order add -F to Part No. i.e. MT3-F, M1-F

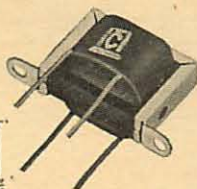
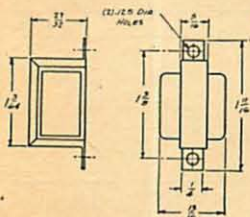


OPEN FRAME WITH CHANNEL

M-FB

Weight 1.13 oz.

To order add -FB to Part No. i.e. MT3-FB, M1-FB



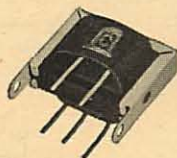
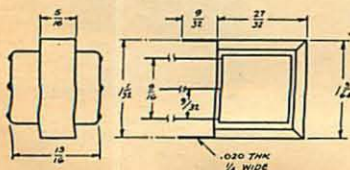
PLUG-IN TAB MOUNTED CHANNEL

M-FPB

Designed for Printed Circuit Applications

Weight 1.13 oz.

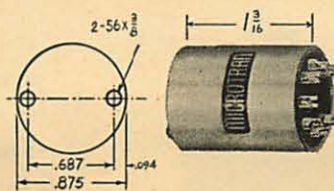
To order add -FPB to Part No. i.e. MT3-FPB, M1-FPB



MINIATURE TRANSISTOR TRANSFORMERS ("MT" SERIES)

MT1-(*)	Line to Base	600	600	10	23	200-15,000
MT2-(*)	Coll. to P.P. Base 2N57	100	10 C.T., 40 C.T.	100	27	200-20,000
MT3-(*)	Collector to Base or line	50,000	600	3	20	300-15,000
MT5-(*)	Collector to speaker	50,000	6	3	20	300-15,000
MT6-(*)	Collector to P.P. Base	100,000	1200 C.T.	1.4	17	200-15,000
MT7-(*)	Collector to P.P. Base	25,000	1200 C.T.	3	22	200-15,000
MT8-(*)	P.P. Collector to P.P. Base	50,000 C.T.	1200 C.T.	3	20	300-15,000
MT9-(*)	Line to P.P. Base	600 C.T.	1200 C.T.	4	23	200-15,000
MT10-(*)	Collector to Base	25,000	600	3	22	200-15,000
MT11-(*)	P.P. Coll. to P.P. Base	4,000 C.T.	600 C.T.	3	32	200-15,000
MT12-(*)	Output collector to speaker	2,000	3.4	10	32	200-15,000
MT13-(*)	P.P. Coll. to speaker	4,000 C.T.	3.4	3	32	200-15,000
MT14-(*)	Coll. to Spkr. 2N179	400	10	50	25	200-20,000
MT15-(*)	P.P. Servo Output 2N57	500 C.T.	210	30	27	300-20,000
MT18-(*)	P.P. Coll. to P.P. Base	25,000 C.T.	1,200 C.T.	6	22	200-15,000
MT20-(*)	P.P. Coll. to P.P. Base	50,000 C.T.	1200/300 Split	3	20	300-15,000
MT21-(*)	P.P. Coll. to P.P. Base	4,000 C.T.	600/150 Split	3	32	200-15,000
MT22-(*)	Line to P.P. Base	600/150 Split	1,200 C.T.	4	23	200-15,000
MT23-(*)	P.P. coll. to Servo	250 C.T.	1000	10	30	300-15,000

*Add either -F, or -FB, or -FPB, or -A, or -P to part No. to designate construction. See Photos



ALUMINUM CASED M-A

Supplied with 2-56 Screws
Weight 1.25 oz.

To order add -A to Part No. i.e. MT3A, M1-A

OCTAL PLUG-IN M-P

Sealed Plastic Housing
Weight 2 oz.

To order add -P to Part No. i.e. MT3-P, M1-P



MICROTRAN company, inc., VALLEY STREAM, N. Y.

These units are designed for use in Airborne Equipment, Missile Devices and Miniature Amplifiers. Thorough baking and resin impregnation assure reliable life. Insulating materials used are compatible for later epoxy potting of complete assemblies. Supplied with 4 inch #27 color coded vinyl leads. Available from stock.

OPEN FRAME SUB-MINIATURE TRANSFORMERS

SUB-MINIATURE AUDIO TRANSFORMERS ("SM" SERIES)

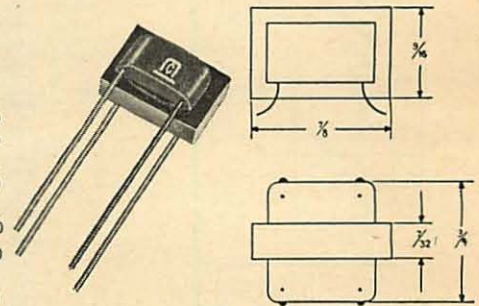
Part No.*	Application	Primary Impedance	Secondary Impedance	Pri. D.C. Unbalance Ma.	Operating Level DBM	Frequency Response ± 2 db.
SM1-(*)	Input	200/50	250,000/62,500	0	6	80-10,000
SM2-(*)	Interstage 3:1	10,000	90,000	0	8	100-10,000
SM3-(*)	Plate to line	10,000	200	3	21	150-10,000
SM4-(*)	Output	30,000	50	1	21	150-10,000
SM5-(*)	Reactor 50 HY at 1 MIL. D.C.	3,000 ohms D.C. Res.				
SM6-(*)	Output	100,000	60	0.5	21	150-10,000

SUB-MINIATURE TRANSISTOR TRANSFORMERS ("SMT" SERIES)

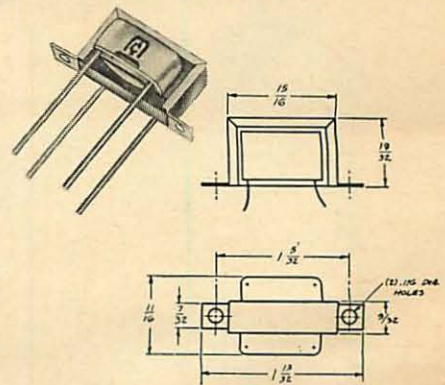
Part No.*	Application	Primary Impedance	Secondary Impedance	Pri. D.C. Unbalance Ma.	Operating Level DBM	Frequency Response ± 2 db.
SMT1-(*)	Line to Base	600	600	9	23	200-15,000
SMT2-(*)	Collector to Base or line	50,000	600	1	20	300-15,000
SMT4-(*)	P.P. Coll. to P.P. Base	50,000 C.T.	600 C.T.	2	20	200-15,000
SMT5-(*)	Collector to speaker	50,000	6	1	20	300-15,000
SMT7-(*)	Collector to P.P. Base	25,000	1200 C.T.	1.5	20	200-15,000
SMT8-(*)	P.P. Coll. to P.P. Base	50,000 C.T.	1,200 C.T.	2	20	200-15,000
SMT9-(*)	Line to P.P. Base	600 C.T.	1,200 C.T.	18	23	200-15,000
SMT10-(*)	Collector to Base	25,000	600	2	20	200-15,000
SMT12-(*)	Output collector to speaker	2,000	3.4	5	30	200-15,000
SMT13-(*)	Output P.P. collector to spkr.	4,000 C.T.	3.4	5	30	200-15,000
SMT16-(*)	Collector to P.P. Base	10,000	1,500 C.T.	1	23	200-15,000
SMT17-(*)	P.P. Coll. to P.P. Base	10,000 C.T.	200 C.T.	6	20	200-15,000
SMT18-(*)	P.P. Coll. to P.P. Base	25,000 C.T.	1,200 C.T.	3	20	200-15,000
SMT19-(*)	Collector to P.P. Base	2,500	2,500 C.T.	2.5	26	200-15,000

*Add either - F, or - FB, or - FPB to part No. to designate construction. See Photos

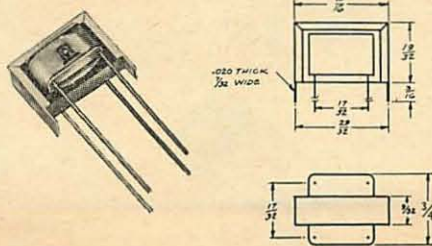
OPEN FRAME SM-F SUB-MINIATURE SIZE Weight .665 oz. To order add -F to Part No. i.e. SMT3-F, SM1-F



OPEN FRAME WITH CHANNEL SM-FB SUB-MINIATURE SIZE Weight .710 oz. To order add -FB to Part No. i.e. SMT3-FB, SM1-FB



PLUG-IN TAB MOUNTED CHANNEL SM-FPB SUB-MINIATURE SIZE Weight .710 oz. To order add -FPB to Part No. i.e. SMT3-FPB, SM1-FPB





MICROTRAN

company, inc., VALLEY STREAM, N. Y.

**OPEN FRAME
MICRO-MINIATURE
TRANSFORMERS**

These units are designed for use in Airborne Equipment, Missile Devices and Miniature Amplifiers. Thorough baking and resin impregnation assure reliable life. Insulating materials used are compatible for later epoxy potting of complete assemblies. Supplied with 4 inch #27 color coded vinyl leads. Available from stock.

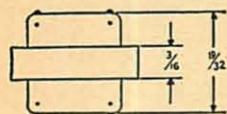
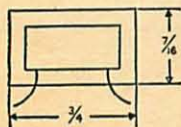
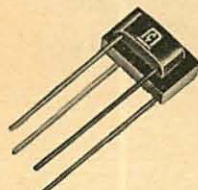
OPEN FRAME

MM-F

MICRO-MINIATURE SIZE

Weight .375 oz.

To order add -F to Part No. i.e. MMT3-F, MM1-F



OPEN FRAME

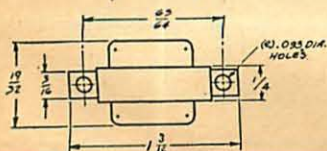
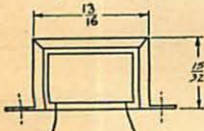
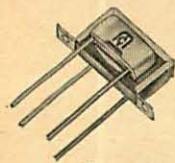
WITH CHANNEL

MM-FB

MICRO-MINIATURE SIZE

Weight .415 oz.

To order add -FB to Part No. i.e. MMT3-FB, MM1-FB



MICRO-MINIATURE AUDIO TRANSFORMERS ("MM" SERIES)

Part No.	Application	Primary Impedance	Secondary Impedance	Pri. DC. Unbalance Ma.	Operating Level DBM	Freq. Response ± 2 db.
MM1-(-)	Input	200/50	250,000/62,500	0	4	200-10,000
MM2-(-)	Interstage 3:1	10,000	90,000	0	4	150-10,000
MM3-(-)	Plate to line	10,000	200	3	20	150-10,000
MM4-(-)	Output	30,000	50	1	20	150-10,000
MM5-(-)	Reactor 50 HY at 1 MIL. D.C.	4,700 ohms				
MM6-(-)	Output	100,000	60	0.5	20	250-10,000
MM7-(-)	Output	30,000	1200	0.5	20	200-10,000

MICRO-MINIATURE TRANSISTOR SERIES ("MMT" SERIES)

Part No.	Application	Primary Impedance	Secondary Impedance	Pri. DC. Unbalance Ma.	Operating Level DBM	Freq. Response ± 2 db.
MMT1-(-)	Line to Base	600	600	8	22	200-15,000
MMT3-(-)	Collector to Base or line	50,000	600	0.7	20	200-15,000
MMT4-(-)	P.P. collector to P.P. Base	50,000 C.T.	600 C.T.	1.4	20	200-15,000
MMT5-(-)	Collector to speaker	50,000	6	1	20	200-15,000
MMT7-(-)	Coll. to P.P. Base	25,000	1200 C.T.	1	20	200-15,000
MMT8-(-)	P.P. collector to P.P. Base	50,000 C.T.	1200 C.T.	1.4	20	200-15,000
MMT9-(-)	Line to P.P. Base	600 C.T.	1200 C.T.	1.6	22	200-15,000
MMT10-(-)	Collector to Base	25,000	600	1	20	200-15,000
MMT11-(-)	P.P. col. to P.P. Base or line	4,000 C.T.	600 C.T.	5	28	200-15,000
MMT12-(-)	Coll. to Spkr.	2,000	3.4	5	28	200-15,000
MMT13-(-)	Output P.P. collector to spkr.	4,000 C.T.	3.4	5	28	200-15,000
MMT16-(-)	Collector to P.P. Base	10,000	1,500 C.T.	1	20	200-15,000
MMT17-(-)	P.P. Coll. to P.P. Base	10,000 C.T.	200 C.T.	6	20	200-15,000
MMT18-(-)	P.P. Coll. to P.P. Base	25,000 C.T.	1,200 C.T.	2	20	200-15,000
MMT19-(-)	Collector to P.P. Base	2,500	2,500 C.T.	2	23	200-15,000

*Add either -F, or -FB, or -FPB to Part No. to designate construction. See Photos.

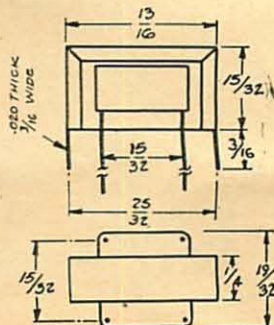
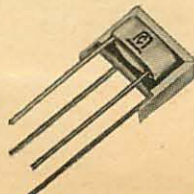
**PLUG-IN TAB
MOUNTED
CHANNEL**

MM-FPB

MICRO-MINIATURE SIZE

Weight .415 oz.

To order add -FPB to Part No. i.e. MMT3-FPB, MM1-FPB



MICROTRAN company, inc., VALLEY STREAM, N. Y.

On this page are listed units designed for the extremes in miniaturization. The 4 inch #27 color coded leads supplied are suitable for dip soldering in printed circuits. Thorough baking and resin impregnation assure reliable life. Insulating materials used are compatible for later epoxy potting of complete assemblies. Highest efficiency—space factor obtained by use of high permeability Nickel-Alloy Cores, Nylon Bobbins, Formvar Wire. Available from stock.

OPEN FRAME ULTRA and VERI-MINIATURE TRANSFORMERS

ULTRA-MINIATURE TRANSISTOR TRANSFORMERS ("UM" SERIES) Frequency Response ± 2 db. 300 to 10,000 Cycles

Part No.	Application	Primary Impedance	Secondary Impedance	Unbal. Pri. D.C. Ma.	Pri. D.C.R.	Sec. D.C.R.	Level MW.
UM21-(*)	Input	100,000	1,000	0	1,700	135	8
UM22-(*)	Driver	20,000	1,000	.5	1,000	90	2.5
UM23-(*)	Driver	20,000	1,200 C.T.	.5	1,000	100	2.5
UM24-(*)	Output	1,000	50	3	60	8.5	3
UM25-(*)	Output	400	50	3	30	4.5	4
UM26-(*)	Output	400	11	3	30	1.5	4
UM27-(*)	Output	400 C.T.	11	6	30	1.5	4
UM28-(*)	Choke	10 hy. (0 dc)		8 hy. (.5ma)	650		

*Add either -F, or -M to Part No. to designate construction. See Photos.

VERI-MINIATURE TRANSISTOR TRANSFORMERS ("VM" SERIES) Frequency Response ± 2 db. 200 to 10,000 Cycles

Part No.	Application	Primary Impedance	Secondary Impedance	Pri. D.C.R.	Sec. D.C.R.	Level MW.
VM1-(*)	Input	50	600 (1.5ma)	6	70	15
VM2-(*)	Input or Interstage	200,000	600 (1.0ma)	2650	80	5
VM3-(*)	Interstage	25,000	600 (1 ma)	675	45	5
VM4-(*)	Input or Interstage	200,000	1200 (.72ma)	2650	160	5
VM5-(*)	Interstage	50,000	600 (1.0ma)	1500	60	5
VM6-(*)	Interstage	100,000	1,200 C.T. (.72 ma)	2K	140	5
VM7-(*)	Output	500 (3.5ma)	3.4	60	.5	15
VM8-(*)	Output	1250 (2.0ma)	3.4	115	.5	15
VM9-(*)	Output	1250 (2.0ma)	50	115	.6	15
VM10-(*)	Interstage	2,500 (1.5 ma)	2,500 C.T.	225	225	3
VM11-(*)	Choke	20 hy. (0ma)	12 hy. (.5ma)	1000	—	—
VM12-(*)	Interstage	20,000	1,000 (.75 ma)	650	100	5
VM13-(*)	Interstage	20,000	1,000 C.T. (.75 ma)	650	100	5

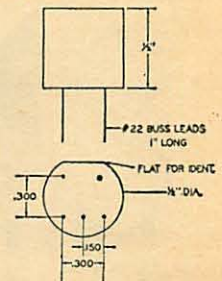
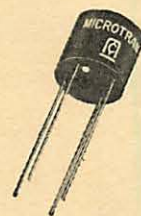
*Add either -F, or -M, or -FPB to Part No. to designate construction. See Photos.

MOLDED UM-M

ULTRA MINIATURE SIZE

Weight .14 oz.

To order add -M to Part Number i.e. UM-22-M

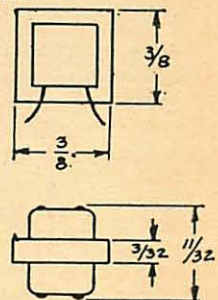
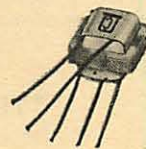


OPEN FRAME UM-F

ULTRA MINIATURE SIZE

Weight .08 oz.

To order add -F to Part Number i.e. UM-22-F

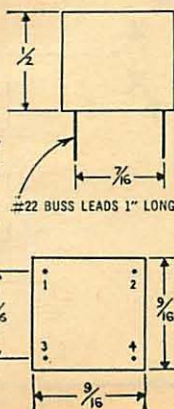
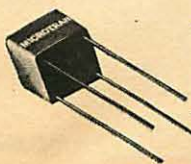


MOLDED VM-M

VERI-MINIATURE SIZE

Designed for plug-in printed circuit applications. Cast Epoxy resin, provides highest resistance to extremes of ambient Weight 1/4 oz.

To order add -M to Part Number. i.e. VM2-M, VM9-M.

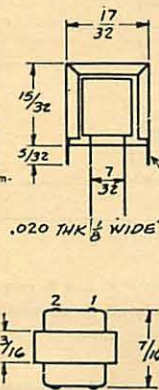
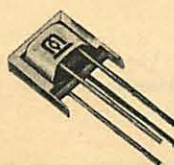


PLUG-IN TAB MOUNTED CHANNEL VM-FPB

VERI-MINIATURE SIZE

Weight .2 oz.

To order add -FPB to Part Number. i.e. VM2-FPB

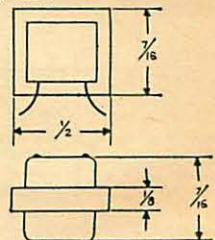


OPEN FRAME VM-F

VERI-MINIATURE SIZE

Weight .16 oz.

To order add -F to Part Number. i.e. VM2-F



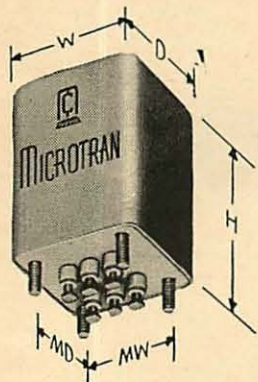


MICROTRAN

company, inc., VALLEY STREAM, N. Y.

D. C. TO D. C. CONVERTER TRANSFORMERS

Permits conversion of low voltage direct current to high voltage for operating mobile and military electronic equipment. These miniaturized high efficiency transformers used in transistor switching circuits provide greatly improved reliability, efficiency, ruggedness, over vibrator and rotary power converters.



All transformers shown are hermetically sealed and constructed in accordance with MIL-T-27A Grade 4, Class R, 10,000 hour minimum life. Unique construction eliminates the difficulties usually experienced with high voltage random wound toroidal transformers and mechanical fragility of ferrite cores. On special order obtainable with modified electrical or mechanical specifications. Available from franchised stocking distributors.

D. C. TO D. C. CONVERTER TRANSFORMERS

Part Number	Nominal D.C. Input Volts	Total V.A. Output*	Typical** Transistors	D.C. Output*				D	Size W	H	Mounting Centers		MIL Case
				F.W. Bridge Volts	Ma.	C.T. Full wave Volts	Ma.				MD	MW	
M8034	28	125	Delco 2N174	500	250	250	420	2 3/4	2 3/8	3 13/16	2 1/8	1 3/4	GA
M8035	13.6	125	Delco 2N442	500	250	250	420	2 3/4	2 3/8	3 13/16	2 1/8	1 3/4	GA
M8036	13.6	40	Delco 2N442	450	90	225	155	2 5/16	2 1/16	3 1/8	1 11/16	1 7/16	FA

*Full wave and C.T. loads may be simultaneously drawn. However, for continuous duty operation, Total V.A. output shown should not be exceeded.

**Typical transistors suggested are for reference only, as user must verify that maximum transistor ratings will not be exceeded for the particular application.

TYPICAL DC-DC CONVERTER CIRCUIT

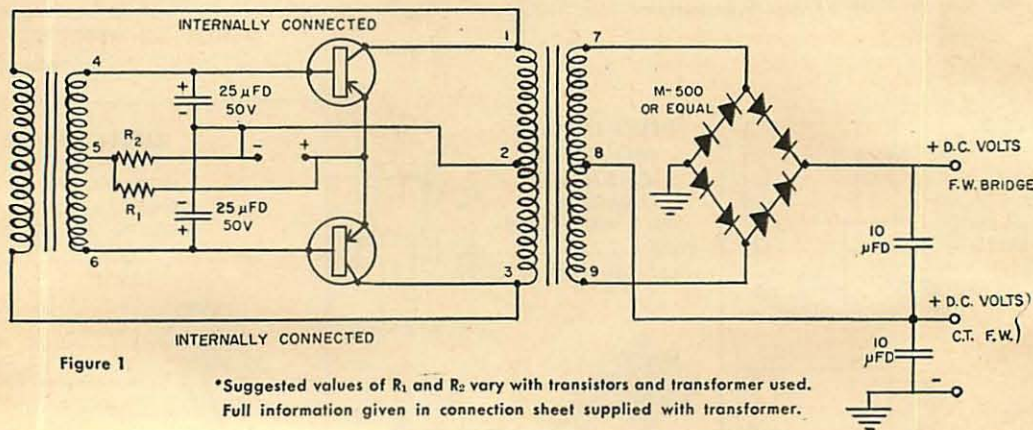


Figure 1

*Suggested values of R₁ and R₂ vary with transistors and transformer used. Full information given in connection sheet supplied with transformer.

Overall DC to DC full load efficiencies 80% when used in circuit similar to Fig. 1. Output voltage to input of rectifier is a nominal 800 cycle square wave permitting ease of filtering.



MICROTRAN

company, inc., VALLEY STREAM, N. Y.

Professional quality cased input Transformers for connection to low level chopper, microphone, pick up, tape heads, or lines. All units are magnetically shielded to improve signal to noise ratio.

CHOPPER AND INPUT TRANSFORMERS

CHOPPER TRANSFORMERS

Efficiently transfers 30 to 500 cps. Transducer or Thermocouple signals to instrument amplifiers. Signal level range from .5 μ V. to .5 volts. Resin impregnated to minimize mechanical vibration noise signal. Low hum pick up assured by 3 mu-metal and 2 copper shields. Accurate center taps and external electrostatic shield connection improve low-level operation.

Part Number	Turns Ratio Full Pri. To Full Sec.	1/2 Pri. To Full Sec.	Ind. of Full Pri. @ .5V, 60~	Imped. of Full Pri. @ .5V, 60~	D.C. Resistance Full Pri. Sec.		Magnetic Shielding	Hght.	Dia.	Wght. Oz.	Fig.
M8025	1:7	1:15.4	17.5	6,600	365	4140	90 DB.	1 ² / ₂ "	1 ³ / ₄ " D.	4.5	A
M8026	1:3.2	1:6.4	60 HY.	22,500	455	3500	90 DB.	1 ² / ₂ "	1 ³ / ₄ " D.	4.5	A

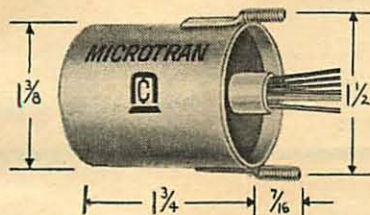


FIGURE A

LOW LEVEL CHOPPER INPUT

6-32 x 7/16" Mounting studs on 1/2" centers. Available on special order with Plug-in header and hermetically sealed.

PLUG-IN INPUT TRANSFORMERS

These Broadcast fidelity input transformers are double mu-metal shielded. Plug-in feature permits simple installation.

Part Number	Pri. Imp.	Sec. Imp.	Magnetic Shielding	Level DBM	Frequency Resp. ±2 db.	Height	Width or Diameter	Weight Oz.	Figure
M8027	250/50 C.T.	50,000	65 DB.	+5	20-20,000	2 ³ / ₄ "	1 ¹ / ₄ " D.	11	B
M8028	170	50,000	65	+5	20-20,000	1 ³ / ₄ "	1" D.	4	C
M8029	600	50,000	65	+5	20-20,000	2 ¹ / ₁₆ "	2"	16	D
M8030*	200/50 C.T.	50,000	65	+5	20-20,000	2 ¹ / ₄ "	1 ¹ / ₄ " D.	6	E
M8031	600 C.T./150	50,000	65	+5	30-20,000	2 ¹ / ₄ "	1 ¹ / ₄ " D.	6	E
M8032†	250 C.T.	50,000	65	+5	20-20,000	2 ¹ / ₄ "	1 ¹ / ₄ " D.	6	E
M8033†	50 C.T.	50,000	65	+5	20-20,000	2 ¹ / ₄ "	1 ¹ / ₄ " D.	6	E

*M8030 is designed as a replacement for Ampex No. 1733-1.

†M8032 and M8033 mates with sockets on many RCA amplifiers.

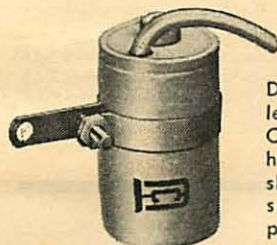


FIGURE C

PHONO INPUT Auto Transformer

Designed to step up voltage of low level high fidelity phono pickups. Case may be rotated for minimum hum pickup. Supplied with 28" shielded cable terminated with standard phono plug. Standard phono receptacle mounted on can.



FIGURE E

MIKE INPUT Plug-in Base

M8030 and M8031 has an 8 pin Octal plug. M8032 and M8033 has a 9 pin Octal Type plug. Matches the sockets on many commercial Public Address and Tape Recorder amplifiers. Available on special order with alternate plug-in headers or hermetically sealed.



FIGURE D

PHONO INPUT Auto Transformer Drawn Steel Case

Designed to step-up voltage of low level high fidelity phono pickups. Supplied with phono receptacle on case and with 28" shielded cable terminated with standard phono plug.



FIGURE B

MIKE INPUT In-line

Designed for insertion in mike cable circuit. Supplied with 6" microphone cable. Input receptacle mates with Amphenol 91-PC4F Plug, (not supplied).

MICROTRAN company, inc., VALLEY STREAM, N. Y.



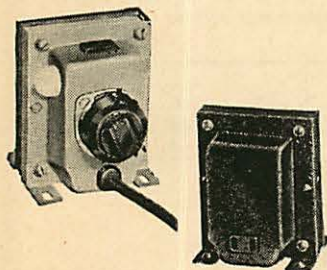
LINE VOLTAGE ACCESSORIES

LVS-153 line voltage stabilizer

A popularly priced quality automatic voltage regulator. Stabilizes line for TV, radio or industrial use where load is constant. Input may vary between 95-130 volts, 60 cycles, nominal output voltage regulated $\pm 3\%$. One model covers 125 to 300 watt range. Built-in automatic relay turns stabilizer on with equipment. Waveshape is free from distortions and frequency sensitivity of resonant type regulators. 50 cycle units available on special order.

Size: 10" x 5" x 9½" Weight: 10 lbs. Finish: Mahogany Wrinkle

PRICE: \$34.95



LVB-117 line voltage booster

Multi-tap selector switch restores line voltages of 90 thru 135 volts to 117 volts output. Calibrated neon indicator permits exact voltage adjustment. Automatic—turns on and off with set. Overload fuse protects against unsafe line increases.

Watts: 350 Weight: 4 lbs. Mtg. Centers: 2½" x 2½"
Size: 4½" x 3¼" x 3¾" Finish: Mahogany Wrinkle

PRICE: \$17.95

LVB "Jr" up-down voltage booster

Reliable, budget-priced unit. Single switch provides 10 volt boost or drop, or straight-through line.

Watts: 350 Weight: 3 lbs. Mtg. Centers: 1½" x 2½"
Size: 2½" x 3¼" x 3¾" Finish: Mahogany Wrinkle

PRICE: \$7.50

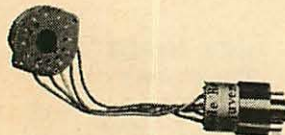


LVB-10 voltage booster

Miniaturized plug-in unit with 4 position switch that provides an "off" position not previously obtainable. Insures maximum performance of TV set when low or high line voltages distort picture or cause synch or oscillator drift.

Input: 100 to 130 volts Size: 2¼" x 3¼" x 3¼"
Output: 10 v. boost, 10 v. drop, line, off. Finish: Baked Enamel
Watts: 250 w. 50/60 cycles Weight: 2 lbs.

PRICE: \$7.50



cathode ray tube rejuvenator

Boosts CRT brightness. Units are resin treated; new design insures cool and buzz-free operation; 5 lead units for magnetic focus tubes only; 6 lead for both magnetic and electrostatic. Weight 8 oz.

#48B: Parallel sets, 6 leads	\$1.75	#51E: Parallel, isolation, 6 leads	\$2.25
#49C: Parallel sets, 5 leads	1.50	#52: Parallel, 2-step boost, 6 leads	3.75
#50D: Series sets, 6 leads	2.00	#53: Universal, isolation & boost	4.25

step down auto transformers

240/220V. to 120/110V. 50/60 cycle. Equipped with secondary standard receptacle and primary 6' U.L. approved line cord. Baked wrinkle finish.



Part No.	Application	DIMENSIONS			Mtg. Ctrs.	Weight	Price
		L	W	H			
M1552	65 Watt capacity	3 23/32	2 1/2	2 9/32	3 1/8	3.5 lbs.	\$ 9.75
M1556	100 Watt capacity	3 1/8	2 7/8	3 1/2	1 3/4 x 2 1/4	4 lbs.	10.50
M1553	150 Watt capacity	3 1/4	2 7/8	3 1/2	2 1/4 x 2 3/8	5 lbs.	12.50
M1555	250 Watt capacity	3 7/8	3 1/4	3 7/8	2 11/16 x 2 1/2	6 lbs.	13.25
M1559	300 Watt capacity	3 3/4	3 7/8	4 5/8	2 7/16 x 3	7 lbs.	14.25
M1558	500 Watt capacity	4 7/8	3 7/8	4 5/8	3 9/16 x 3	12 lbs.	21.00
M1551	750 Watt capacity	5 1/2	4 1/2	5 3/8	3 1/4 x 3 1/2	16 lbs.	26.75
M1557	1000 Watt capacity	7	4 1/2	5 3/8	5 1/4 x 3 1/2	25 lbs.	40.00
M1554	1500 Watt capacity	8	4 1/2	5 3/8	6 1/4 x 3 1/2	29 lbs.	55.00
M1550	2000 Watt capacity	8 1/2	4 3/8	6	6 5/16 x 3 7/16	37 lbs.	80.00

MICROTRAN company, inc., VALLEY STREAM, N. Y.

Prices, Mechanical Construction, or Electrical Characteristics Subject to Modification without notice.

PRICE LIST

Effective Date 1/1/60

Part No.	List Price	Part No.	List Price	Part No.	List Price	Part No.	List Price	Part No.	List Price	Part No.	List Price	
MINIATURE TRANSFORMERS												
M1-A	\$11.75	M14-FB	\$ 6.50	M55-FB	\$ 6.75	MT5-AG	\$15.50	MT22-A	\$13.75	SMT16-FB	\$ 7.75	
M1-AG	16.50	M14-H	15.00	M55-H	11.50	MT5-FB	6.50	MT22-AG	16.25	SMT16-H	11.25	
M1-FB	6.25	M14-M	17.00	M55-M	13.50	MT5-H	14.00	MT22-FB	7.25	SMT16-M	13.25	
M1-H	15.00	M14-P	14.25	M56-FB	6.75	MT5-M	16.00	MT22-H	14.75	SMT17-FB	8.00	
M1-M	17.00	M15-A	11.75	M56-H	11.75	MT5-P	13.25	MT22-M	16.75	SMT17-H	11.50	
M1-P	14.25	M15-AG	14.00	M56-M	13.75	MT6-A	13.25	MT22-P	14.00	SMT17-M	13.50	
M2-A	11.75	M15-FB	6.00	MM7-FB	5.50	MT6-AG	15.75	MT23-A	13.00	SMT18-FB	8.25	
M2-AG	16.75	M15-H	12.50	MM7-H	10.75	MT6-FB	6.75	MT23-AG	15.50	SMT18-H	11.75	
M2-FB	6.50	M15-M	14.50	MM7-M	12.75	MT6-H	14.25	MT23-FB	6.50	SMT18-M	13.75	
M2-H	15.25	M15-P	14.25	MICRO-MINIATURE TRANSISTOR TRANSFORMERS			MT6-M	16.25	MT23-H	14.00	SMT19-AF	12.50
M2-M	17.25	TRANSISTOR DRIVER					MT6-P	13.50	MT23-M	16.00	SMT19-FB	7.75
M2-P	14.25				M8002	17.50	MMT1-FB	6.50	MT7-A	13.25	MT23-P	13.25
M3-A	10.75	M8003	18.50	MMT1-H	12.25	MT7-FB	6.75	SUB-MINIATURE TRANSFORMERS			SMT19-M	13.25
M3-AG	15.75	M8004	17.00	MMT1-M	14.25	MT7-H	14.25				SM1-AF	15.00
M3-FB	6.00	M8005	17.00	MMT3-FB	6.75	MT7-M	16.25	SM1-FB	7.25	UM21-F	10.00	
M3-H	14.25	M8006	15.75	MMT3-H	12.50	MT7-P	13.50	SM1-H	12.00	UM22-F	7.25	
M3-M	16.25	TRANSISTOR OUTPUT			MMT3-M	14.50	MT8-A	13.50	SM2-AF	14.50	UM23-F	7.75
M3-P	13.25				M8007	17.00	MMT4-FB	8.00	MT8-AG	16.00	SM2-FB	6.50
M4-A	10.00	M8008	16.50	MMT4-H	14.25	MT8-FB	7.00	SM2-H	11.50	UM25-F	6.50	
M4-AG	13.25	M8009	18.00	MMT4-M	16.25	MT8-H	14.50	SM2-M	15.00	UM26-F	6.50	
M4-FB	5.75	M8010	17.50	MMT5-FB	7.25	MT8-M	16.50	SM3-AF	14.50	UM27-F	7.00	
M4-H	11.75	M8011	17.00	MMT5-H	13.25	MT8-P	13.75	SM3-FB	6.50	UM28-F	6.25	
M4-M	13.75	M8012	17.50	MMT5-M	15.25	MT9-A	13.50	SM3-H	11.50	UM21-M	11.00	
M4-P	12.50	M8013	17.00	MMT7-FB	7.50	MT9-AG	16.00	SM3-M	15.00	UM22-M	9.00	
M5-A	10.00	M8014	14.00	MMT7-H	14.00	MT9-FB	7.00	SM4-AF	14.50	UM23-M	9.50	
M5-AG	13.25	M8015	17.50	MMT7-M	16.00	MT9-H	14.50	SM4-FB	6.50	UM24-M	8.25	
M5-FB	5.75	M8016	14.25	MMT8-FB	7.75	MT9-M	16.50	SM4-H	11.50	UM25-M	8.25	
M5-H	11.75	TRANSISTOR POWER			MMT8-H	14.25	MT9-P	13.00	SM4-M	15.00	UM26-M	8.25
M5-M	13.75				M8018	25.00	MMT8-M	16.25	MT10-A	13.00	SM5-AF	13.50
M5-P	12.50	M8019	26.50	MMT9-FB	7.00	MT10-AG	15.50	SM5-FB	5.00	UM28-M	7.75	
M6-A	10.75	M8020	30.00	MMT9-H	12.75	MT10-FB	6.50	SM5-H	10.50	VERI-MINIATURE TRANSFORMERS		
M6-AG	15.75	M8021	26.50	MMT9-M	14.75	MT10-H	14.00	SM5-M	14.00			
M6-FB	6.00	M8022	27.00	MMT10-FB	5.75	MT10-M	16.00	SM6-AF	14.50	VM1-M	8.75	
M6-H	14.25	M8023	31.50	MMT10-H	12.00	MT10-P	13.25	SM6-FB	7.25	VM2-FPB	9.50	
M6-M	16.25	M8024	30.50	MMT10-M	14.00	MT11-A	13.50	SM6-H	11.75	VM2-M	11.25	
M6-P	13.25	CHOPPER TRANSFORMERS			MMT11-FB	7.25	MT11-AG	16.00	SM6-M	15.00	VM3-FPB	7.50
M7-A	10.75				M8025	23.00	MMT11-H	13.00	MT11-FB	7.00	SMT1-AF	11.25
M7-AG	17.25	M8026	23.00	MMT11-M	15.00	MT11-H	14.50	SMT1-FB	6.50	VM4-FPB	9.50	
M7-FB	6.25	INPUT TRANSFORMERS			MMT12-FB	6.50	MT11-M	16.50	SMT1-H	10.00	VM4-M	11.25
M7-H	15.75				M8027	19.25	MMT12-H	12.25	MT11-P	13.75	SMT1-M	12.00
M7-M	17.75	M8028	19.75	MMT12-M	14.25	MT12-A	13.00	SMT3-AF	12.25	VM5-M	9.50	
M7-P	13.25	M8029	21.75	MMT13-FB	6.75	MT12-AG	15.50	SMT3-FB	7.50	VM6-FPB	9.75	
M8-A	11.75	M8030	22.50	MMT13-H	12.50	MT12-FB	6.50	SMT3-H	11.00	VM6-M	11.50	
M8-AG	16.50	M8031	22.25	MMT13-M	14.50	MT12-H	14.00	SMT3-M	13.00	VM7-FPB	7.00	
M8-FB	6.25	M8032	21.75	MMT16-FB	7.50	MT12-M	16.00	SMT4-FB	8.25	VM7-M	8.75	
M8-H	15.00	M8033	21.75	MMT16-H	14.00	MT12-M	14.00	SMT4-H	11.75	VM8-FPB	7.25	
M8-M	17.00	DC to DC CONVERTER			MMT16-M	16.00	MT12-P	13.25	SMT4-M	13.75	VM8-M	9.00
M8-P	14.25				M8034	44.50	MMT17-FB	7.50	MT13-A	13.25	SMT5-AF	12.00
M9-A	11.75	M8035	44.50	MMT17-H	13.50	MT13-AG	15.75	SMT5-FB	7.25	VM9-M	9.00	
M9-AG	16.50	M8036	41.50	MMT17-M	15.50	MT13-FB	6.75	SMT5-H	10.75	VM10-FPB	7.75	
M9-FB	6.25	MICRO-MINIATURE TRANSFORMERS			MMT18-FB	7.75	MT13-H	14.25	SMT5-M	12.75	VM10-M	11.50
M9-H	15.00				MM1-FB	7.50	MMT18-H	14.25	MT13-M	16.25	SMT7-AF	12.50
M9-M	17.00	MM1-H	12.25	MMT18-M	16.25	MT14-A	12.00	SMT7-FB	7.75	VM11-M	8.50	
M9-P	14.25	MM1-M	14.25	MMT19-FB	6.75	MT14-AG	14.50	SMT7-H	11.25	VM12-FPB	7.50	
M10-A	12.50	MM2-FB	8.00	MMT19-H	12.50	MT14-FB	6.00	SMT7-M	13.25	VM12-M	9.25	
M10-AG	17.00	MM2-H	12.50	MMT19-M	14.50	MT14-H	13.00	SMT8-FB	8.25	VM13-FPB	7.75	
M10-FB	6.50	MM2-M	14.50	MINIATURE TRANSISTOR TRANSFORMERS			MT14-M	15.00	SMT8-H	11.75	VM13-M	11.50
M10-H	15.50	MM3-FB	6.75				MT1-A	12.00	MT15-A	13.00	SMT8-M	13.75
M10-M	17.50	MM3-H	11.75	MT1-H	13.00	MT15-AG	15.50	SMT9-FB	7.00	HD-11	27.50	
M10-P	15.00	MM3-M	13.75	MT1-M	15.00	MT15-FB	6.50	SMT9-H	10.50	HD-11-AD	2.70	
M11-A	11.75	MM3-P	11.75	MT1-P	12.25	MT15-H	14.00	SMT9-M	12.50	HM-80	21.75	
M11-AG	16.50	MM4-FB	6.75	MT2-A	13.50	MT15-M	16.00	SMT9-P	12.50	HP-61	7.95	
M11-FB	6.25	MM4-H	11.75	MT2-AG	16.00	MT18-A	13.50	SMT10-AF	11.75	*VARIABLE INDUCTANCES		
M11-H	15.00	MM4-M	13.75	MT2-AG	16.00	MT18-AG	16.00	SMT10-FB	7.00			
M11-M	17.00	DC to DC CONVERTER			MT2-FB	7.00	MT18-FB	7.00	SMT10-H	10.50	200-1 thru	1.00
M11-P	14.25				MM11-FB	7.50	MT2-H	14.50	MT18-M	16.50	SMT11-AF	11.25
M12-A	12.50	MM11-H	12.25	MT2-M	16.50	MT18-P	13.75	SMT12-AF	6.50	TERMS:		
M12-AG	17.00	MM11-M	14.25	MT2-P	13.75	MT20-A	14.00	SMT12-H	10.00			
M12-FB	6.25	MM11-P	11.75	MT3-A	13.00	MT20-AG	16.50	SMT12-M	12.00	10-99 - 40%; 100-200 - 60%.		
M12-H	15.50	MM2-FB	8.00	MT3-AG	15.50	MT20-FB	7.50	SMT13-AF	11.50	May not be intermixed.		
M12-M	17.50	MM2-H	12.50	MT3-FB	6.50	MT20-H	15.00	SMT13-FB	6.75	*Discount shown does not apply.		
M12-P	15.00	MM2-M	14.50	MT3-H	14.00	MT21-A	13.75	SMT13-H	10.25			
M13-A	9.25	MM3-FB	6.75	MT3-M	16.00	MT21-AG	16.25	SMT13-M	12.25			
M13-AG	12.25	MM3-H	11.75	MT3-P	13.25	MT21-FB	7.25	SMT16-AF	12.50			
M13-FB	5.50	MM3-M	13.75	MT5-A	13.00	MT21-H	14.75					
M13-H	10.75	MM3-P	11.75			MT21-M	16.75					
M13-M	12.75	MM4-FB	6.75			MT21-P	14.00					
M13-P	11.75	MM4-H	11.75									
M14-A	11.75											
M14-AG	16.50											

NOTE: To determine pricing of Part Nos. with -F Suffix (i.e. MT1-F) deduct \$.50 from list price of equivalent -FB item (i.e. MT1-FB). List price of Part No. with -FPB is same as equivalent -FB item.

TERMS:
1% 10, Net 30
F.O.B. Valley Stream, New York
Minimum Billing \$7.50

INDUSTRIAL DISCOUNT
1-9 - 40%; 10-49 - 40/10%;
50-99 - 50%; 100-200 - 60%.
May not be intermixed.
*Discount shown does not apply.