

# APPLICATION NOTES

## REMOTE CONTROL UNIT FOR LEVEL ADJUSTMENT AND STEREO-BALANCE

This circuit requires no shielded wiring since the control leads are isolated from the audio circuits.

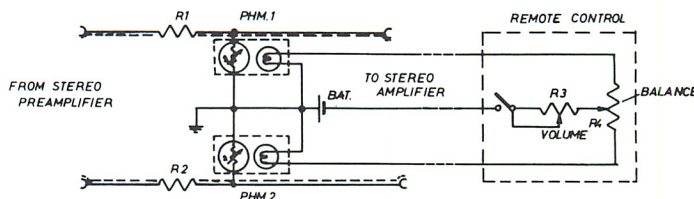
Control is smooth and noiseless. Control range is easily adequate for optimum personal adjustment almost anywhere in a room or hall.

Insertion loss needn't exceed that required for balance.

Unit may be installed between pre-amplifier and power amplifier.

Battery drain will not exceed 65 mA. A 6V 'hot shot' battery run 6 hours a day will serve for a month or more.

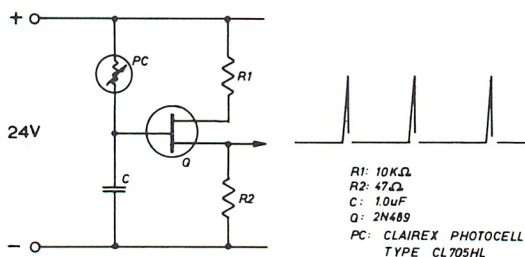
## REMOTE CONTROL UNIT FOR LEVEL ADJUSTMENT AND STEREO-BALANCE



- R1, R2: 47K
- R3: 500Ω, 4W
- R4: 500Ω, 4W
- PHM1, PHM2: CLAIREX PHOTOMOD TYPE CLM5012
- BAT: 12V
- CLM5012 = ( CL705L + 12V/40mA Lamp)

## A/D CONVERTER: LIGHT INTENSITY TO P.R.F.:

The output pulse frequency is proportional to cell conductance which follows the light intensity.



- R1: 10KΩ
- R2: 47Ω
- C: 1.0μF
- Q: 2N489
- PC: CLAIREX PHOTOCELL TYPE CL705HL

## A/D CONVERTER: LIGHT INTENSITY TO P.R.F.:

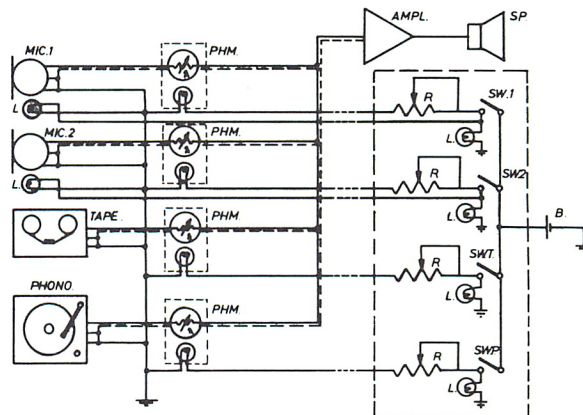
## MULTIPLEX (REMOTE) CONSOLE

Switching, mixing, and level control are all performed via isolated 'cold' low voltage DC lines.

Switching and level adjustments are clickless and noiseless.

A lamp at each mike indicates when the mike is 'live'.

## MULTIPLEX (REMOTE) CONSOLE



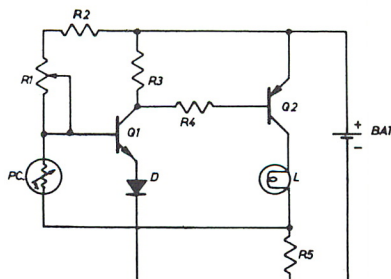
- R: 2500
- L: 12V
- PHM: CLM 5012
- B: 12V
- PHM: CLM 5012 = ( CL705L + 12V/40mA LAMP)

## BARRIER LAMP CIRCUIT

For unattended lamps. Lamp goes on at dusk, off at dawn; day drain is less than one percent of night drain.

Low power transistors can be used even for ¼A lamps since circuit triggers output transistor from OFF to saturation.

## BARRIER LAMP CIRCUIT



- R1: 10KΩ
- R2: 1KΩ
- R3: 2.7KΩ
- R4: 330Ω
- R5: 2.7Ω
- D: Si diode rated > 20mA
- L: ¼A
- BAT: 6V
- Q1: 2N 2923
- Q2: 2N 525
- PC: CLAIREX PHOTOCELL TYPE CL 5MSL



# CLAIREX ELECTRONICS

A DIVISION OF CLAIREX® CORPORATION

560 South Third Avenue, Mount Vernon, N.Y. 10550 · (914) 664-6602